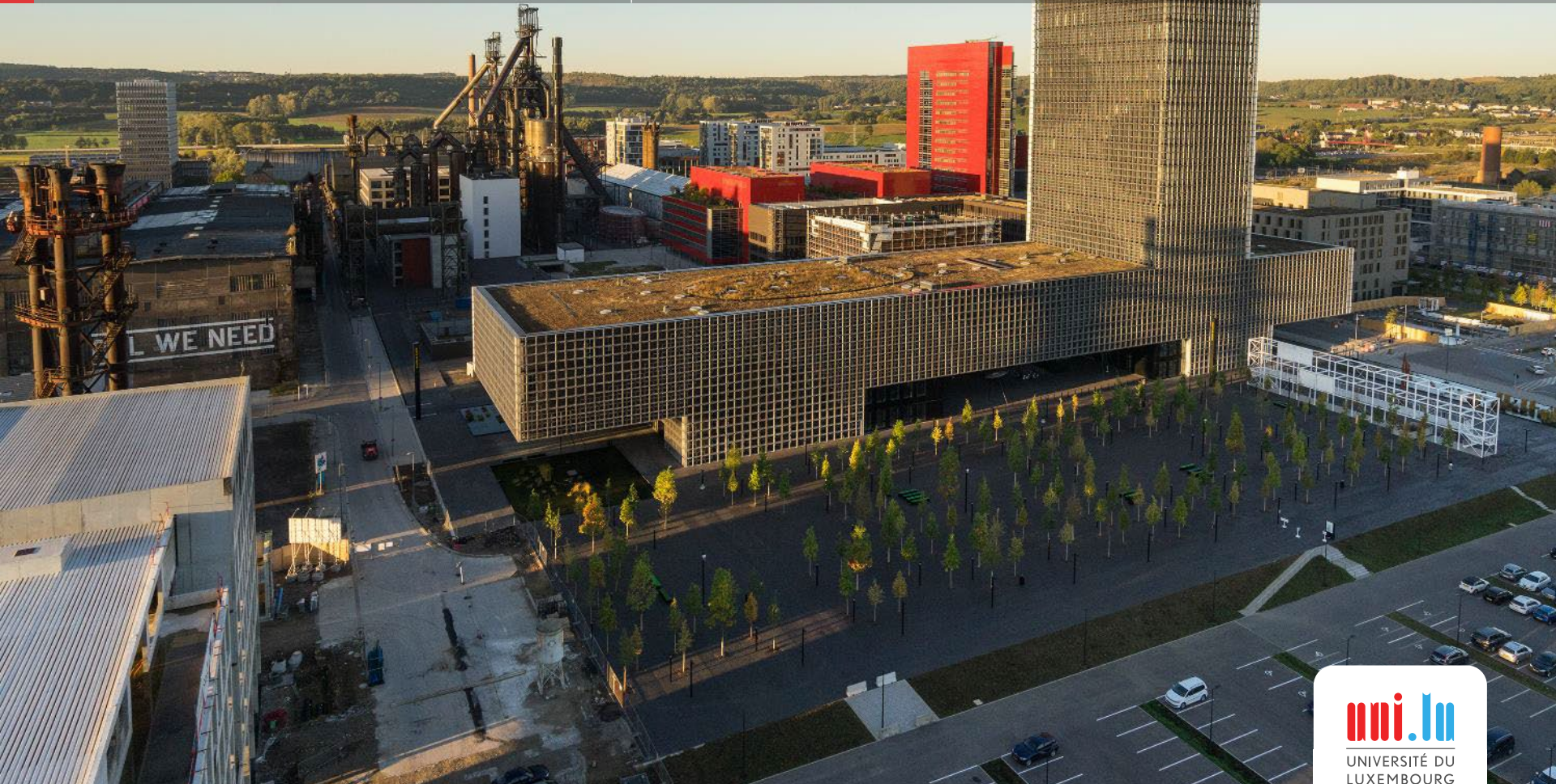


University of Luxembourg

Multilingual. Personalised. Connected.

Shaping the Welfare State in times of Polycrisis: Crunch time for the Luxembourg Social Model?

Dr Elena Danescu, C²DH Research Scientist
(elena.danescu@uni.lu)

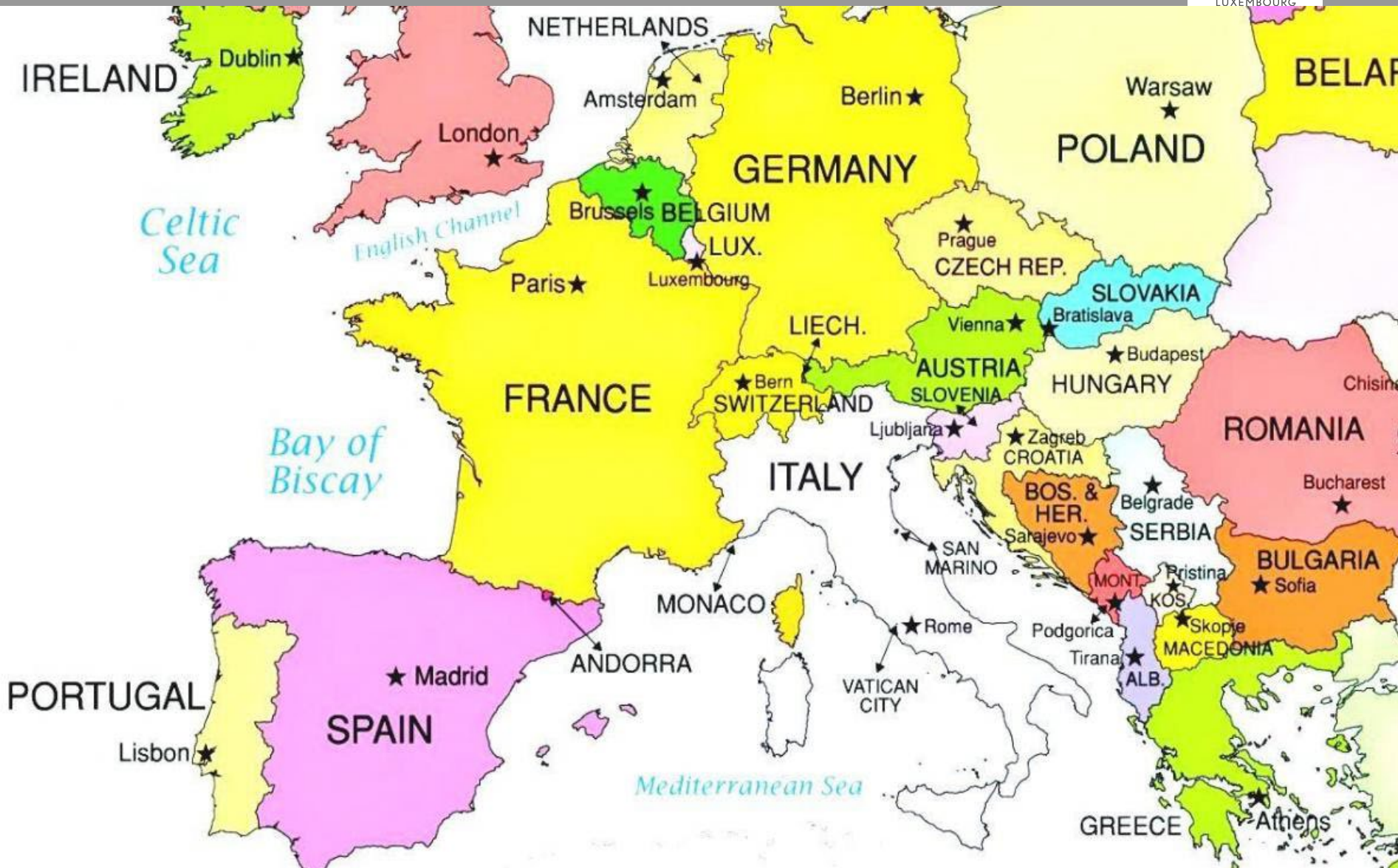


Contents

1. **Introductory and doctrinal remarks**
2. **Building the welfare state through paradigmatic shifts in economy - three successive transitions**
3. **The ‘Luxembourg model’ - framework, actors and mechanisms**
4. **The «Automatic Index-linking mechanism»**
5. **The ‘Luxembourg model’ facing the «Polycrisis» - challenges and issues**

Shaping the Welfare State in times of Polycrisis: Crunch time for the Luxembourg Social Model?

21st STOREP Conference (Milan, 27-29 June 2024)



Shaping the Welfare State in times of Polycrisis: Crunch time for the Luxembourg Social Model?

21st STOREP Conference (Milan, 27-29 June 2024)



Thank you for your attention!
Any questions or comments?

elena.danescu@uni.lu