

Appendix data

Multionics analysis identifies novel facilitators of human dopaminergic neuron differentiation

Table of Contents

Appendix Figure Legends.....	2
Appendix Figure S1.....	3
Appendix Figure S2.....	4
Appendix Figure S3.....	5
Appendix Figure S4.....	6

Appendix Figure Legends

Appendix Figure S1. **A)** Live imaging for early and late transductions with shRNA lentiviral particles across time. Bar plots representing GFP⁺ cells at day 15 of analysis **B)** Live imaging for early and late transduction with lentiviral particles for the overexpression of LBX1, NHLH1 and NR2F2. Bar plots representing GFP⁺ cells at day 15 of analysis. Scale bar = 200 μ m.

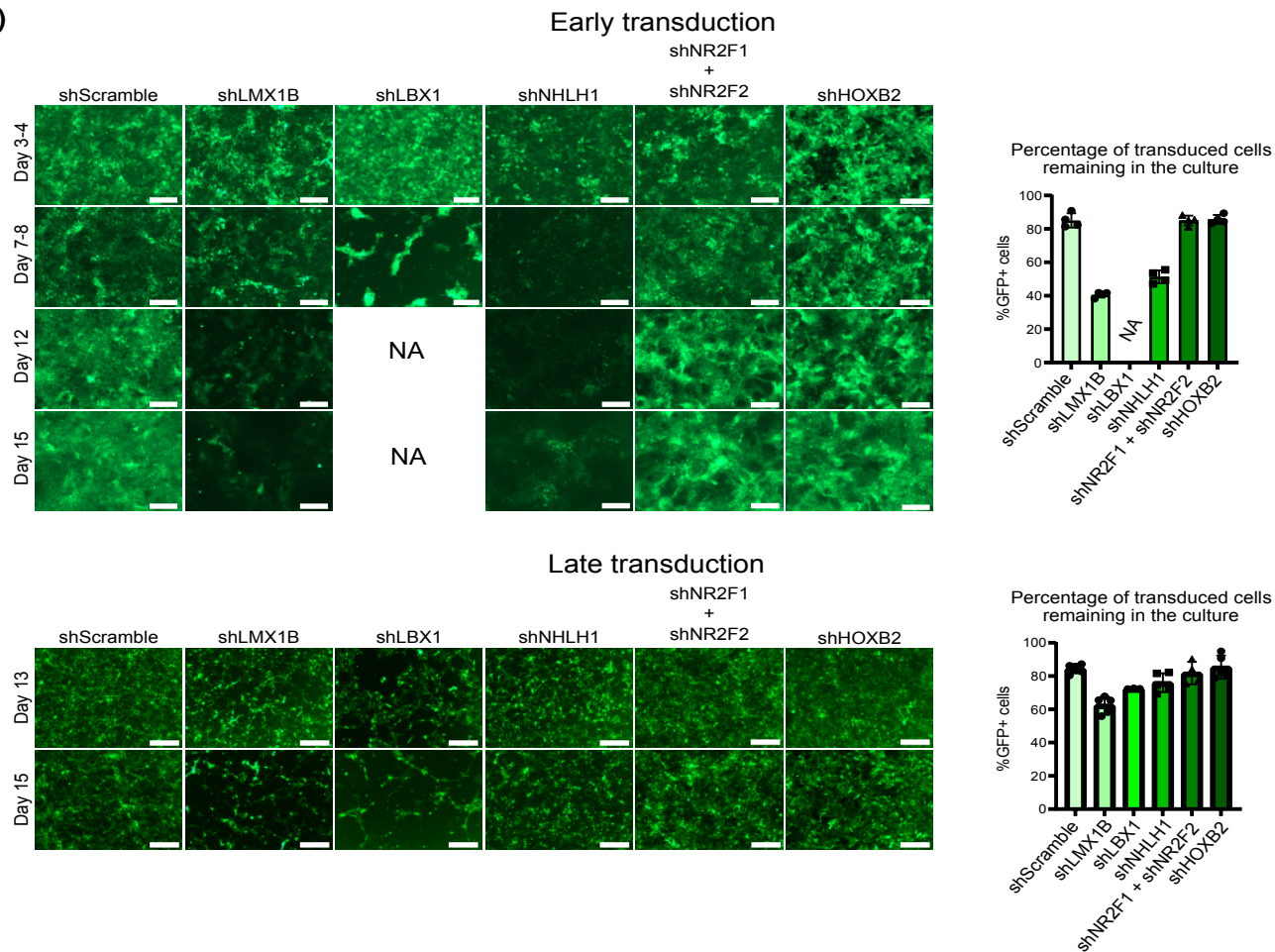
Appendix Figure S2. **A)** Images of high-content imaging analysis from Figure 4 and Figure EV4 with signal masks for both TH and MAP2 stainings included. Late transduction with indicated shRNA particles in mDANs derived from **(A)** 17608 cells, **(B)** K2135 cells, **(C)** TH-Rep1 cells, and **(D)** TH-Rep2 cells. Scale bar = 100 μ m.

Appendix Figure S3. **A)** Loci and expression of the three genes coding for miR-124 **B)** Live imaging of cells under ABX464 treatment and NHLH1 KD at day 14 of differentiation **C)** Flow cytometry analysis showing the differences in shape between neurons treated with ABX464 and non-treated **D)** Expression Ct values detected by TaqMan and RT-qPCR for miR-1243p and NHLH1, respectively, in samples treated with ABX464 and under NHLH1 KD.

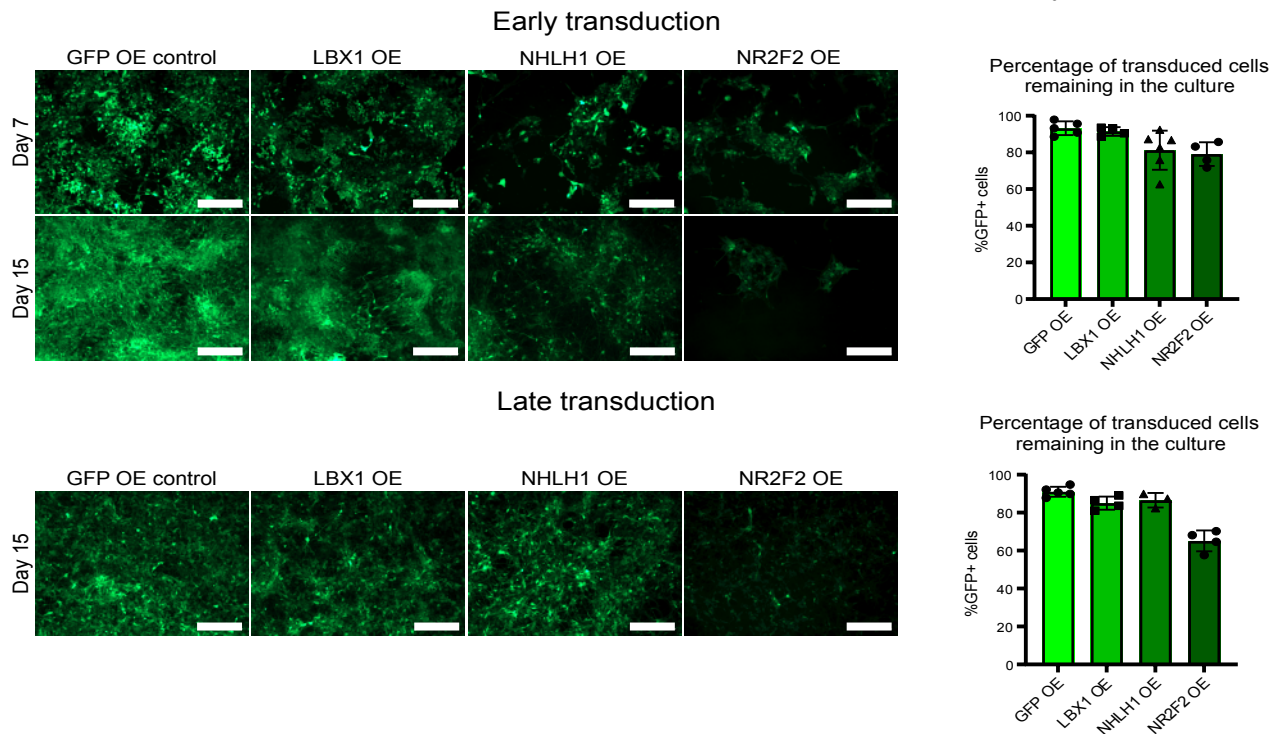
Appendix Figure S4. Live imaging of the GFP levels as a read-out of transduction efficiency in cells under GW3965 and Rapamycin treatment and LBX1 KD at day 14 of differentiation. Scale bar = 200 μ m.

Appendix Figure S1

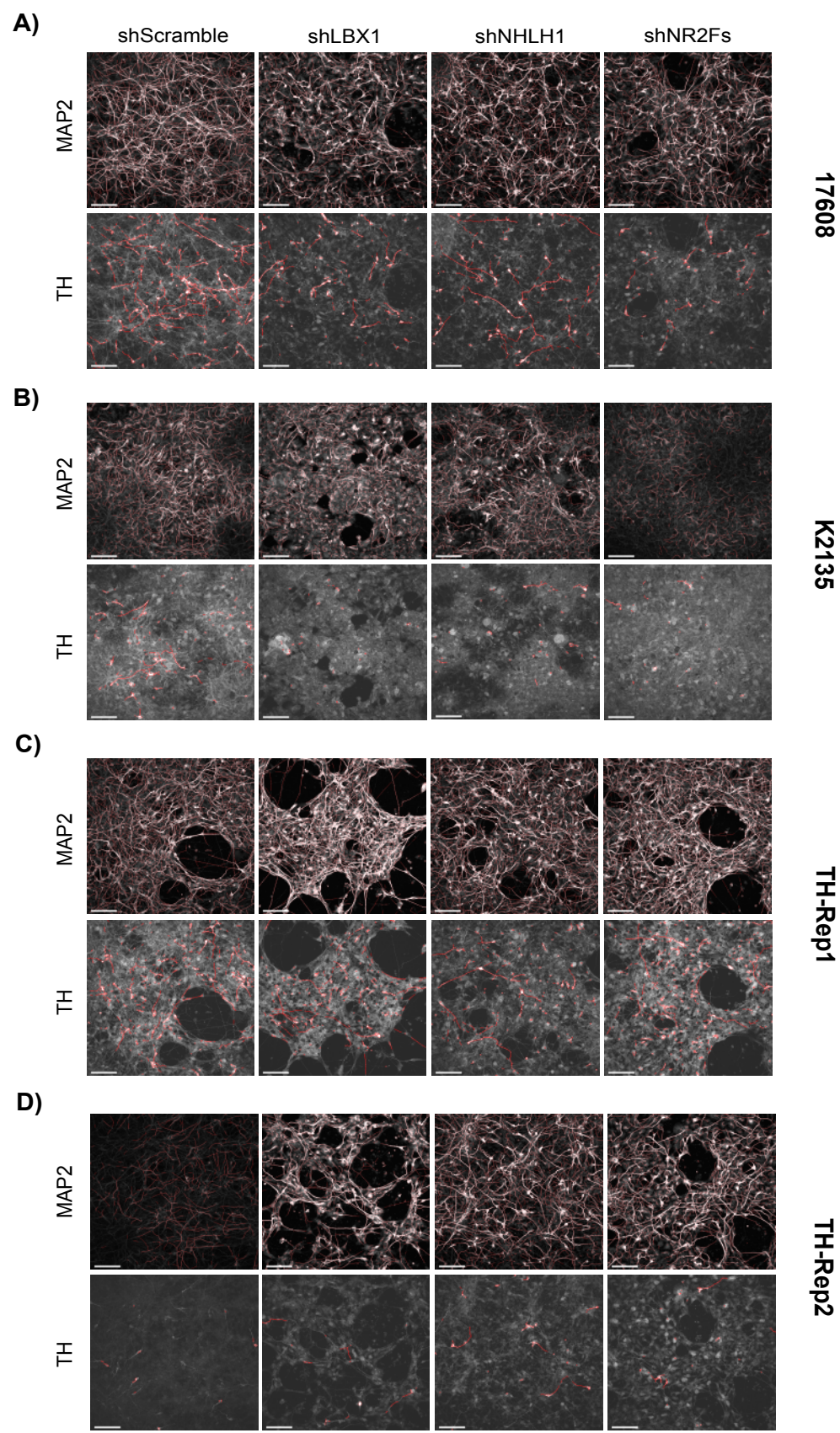
A)



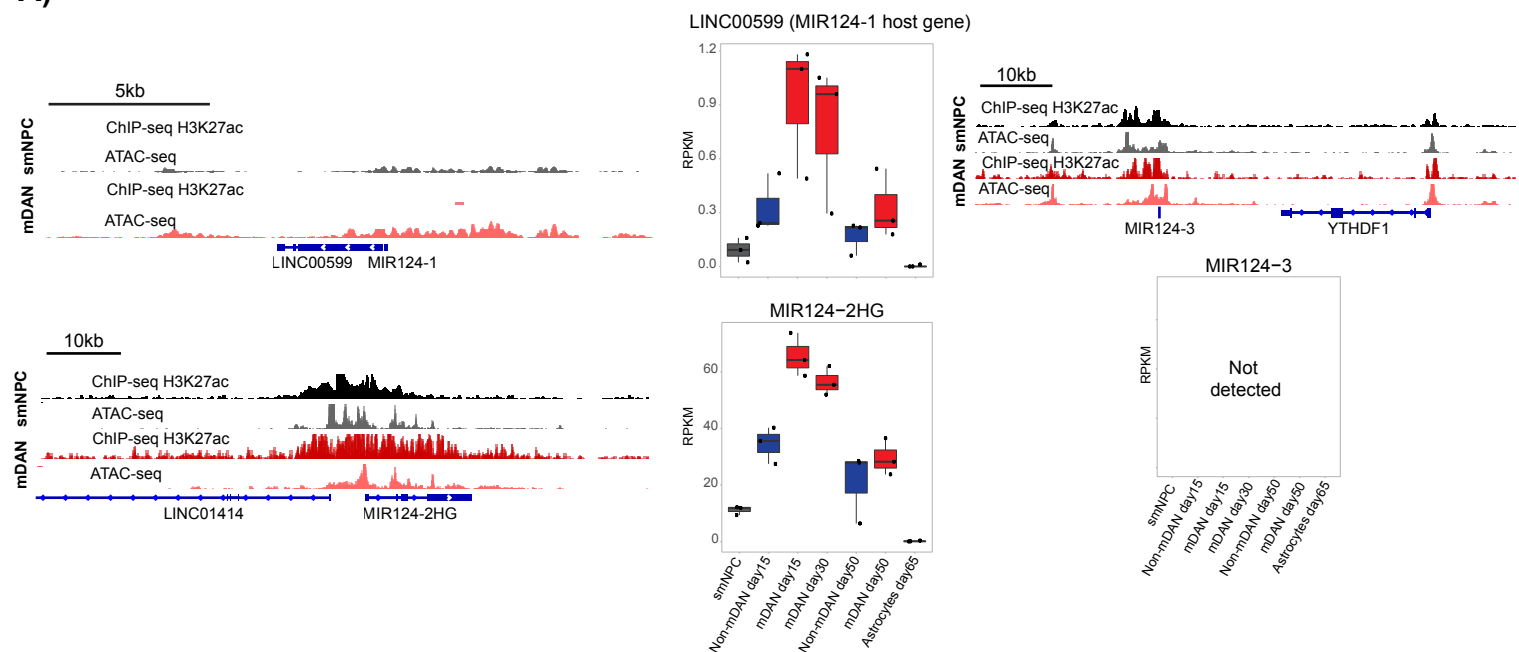
B)



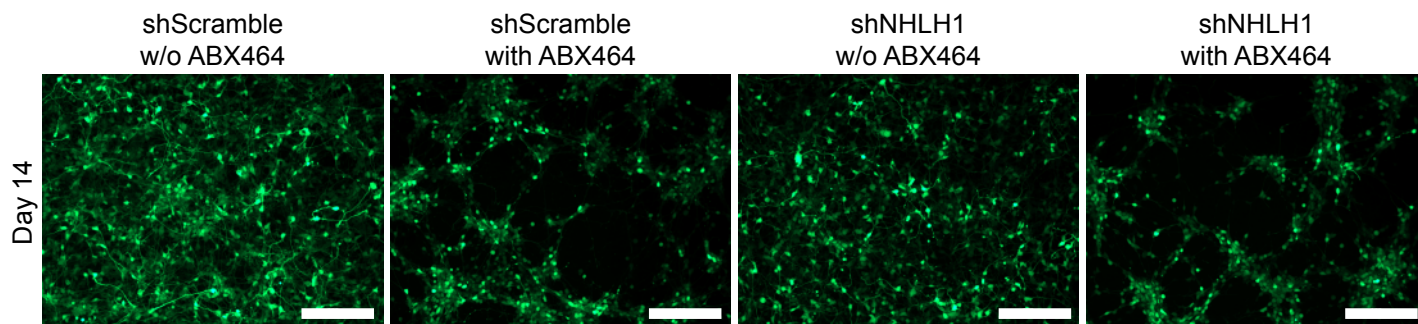
Appendix Figure S2



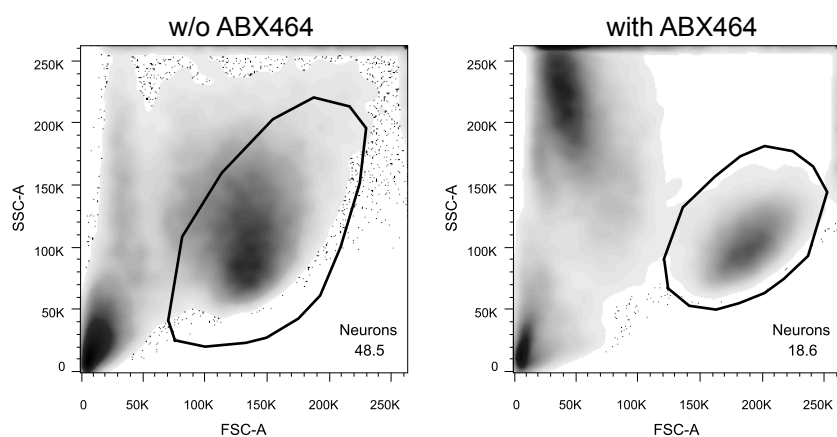
A)



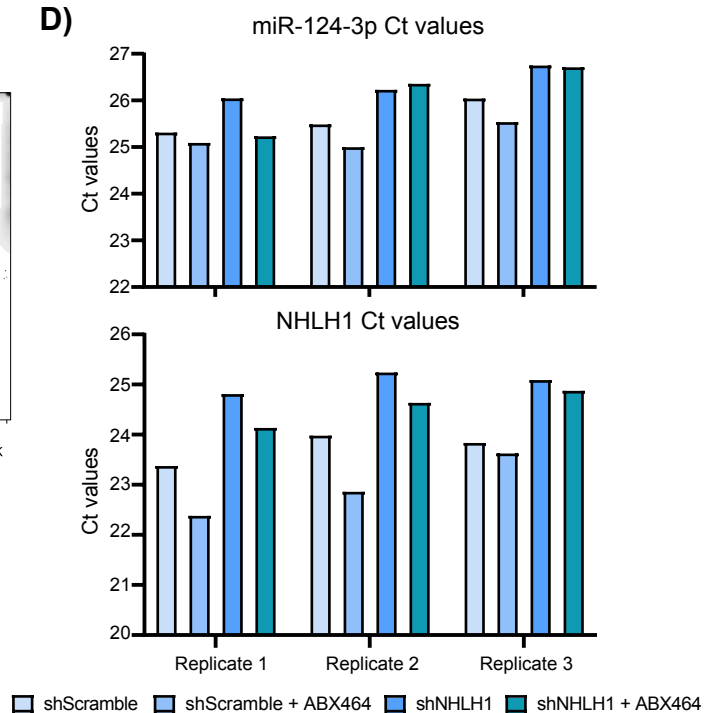
B)



C)



D)



Appendix Figure S4

