

Trade Integration and Trade Imbalances in the European Union: A Network Perspective

Gautier M. Krings^{1,2}, Jean-François Carpentier³, Jean-Charles Delvenne^{1,4*}

1 Institute for Information and Communication Technologies, Electronics and Applied Mathematics, Université catholique de Louvain, Louvain-la-Neuve, Belgium, **2** Real Impact Analytics Belgium, Brussels, Belgium, **3** Center for Research in Economics and Management, University of Luxembourg, Luxembourg, Luxembourg, **4** Center for Operation Research and Econometrics, Université catholique de Louvain, Louvain-la-Neuve, Belgium

Abstract

We study the ever more integrated and ever more unbalanced trade relationships between European countries. To better capture the complexity of economic networks, we propose two global measures that assess the trade integration and the trade imbalances of the European countries. These measures are the network (or indirect) counterparts to traditional (or direct) measures such as the trade-to-GDP (Gross Domestic Product) and trade deficit-to-GDP ratios. Our indirect tools account for the European inter-country trade structure and follow (i) a decomposition of the global trade flow into elementary flows that highlight the long-range dependencies between exporting and importing economies and (ii) the commute-time distance for trade integration, which measures the impact of a perturbation in the economy of a country on another country, possibly through intermediate partners by domino effect. Our application addresses the impact of the launch of the Euro. We find that the indirect imbalance measures better identify the countries ultimately bearing deficits and surpluses, by neutralizing the impact of trade transit countries, such as the Netherlands. Among others, we find that ultimate surpluses of Germany are quite concentrated in only three partners. We also show that for some countries, the direct and indirect measures of trade integration diverge, thereby revealing that these countries (e.g. Greece and Portugal) trade to a smaller extent with countries considered as central in the European Union network.

Citation: Krings GM, Carpentier J-F, Delvenne J-C (2014) Trade Integration and Trade Imbalances in the European Union: A Network Perspective. PLoS ONE 9(1): e83448. doi:10.1371/journal.pone.0083448

Editor: Jesus Gomez-Gardenes, Universidad de Zaragoza, Spain

Received: March 6, 2013; **Accepted:** November 4, 2013; **Published:** January 22, 2014

Copyright: © 2014 Krings et al. This is an open-access article distributed under the terms of the Creative Commons Attribution License, which permits unrestricted use, distribution, and reproduction in any medium, provided the original author and source are credited.

Funding: G.K. and J.-C. D. are supported by the Belgian Programme of Interuniversity Attraction Poles initiated by the Belgian Federal Science Policy Office and an Action de Recherche Concertée (ARC) of the French Community of Belgium. The funders had no role in study design, data collection and analysis, decision to publish, or preparation of the manuscript.

Competing Interests: The authors have declared that no competing interests exist.

* E-mail: jean-charles.delvenne@uclouvain.be

Introduction

The structure of European trade has undergone deep transformations last two decades, such as the integration of former socialist economies and the introduction of the Euro. Across the years, under these events and the evolution of the world trade, the structure of European trade has been modified thoroughly, generally speaking in the sense of higher mutual trade but also in terms of acuter trade imbalance.

Among the indicators that can quantify the structure of trade, one finds direct measures of bilateral trade such as the trade-to-GDP ratio (where trade is defined as the sum of imports and exports of goods and services) and the deficit-to-GDP ratio (where trade deficit is defined as the difference between imports and exports). The first one is a measure of the trade integration of a country within its environment. The second one is a measure of trade imbalance between a country and its partners. These measures are direct in the sense that they only take into account the interaction of one country with its trade partners, neglecting the remainder of the network.

In this paper, we propose two complementary methods for analysing the global structure of a trade network. These methods take part in the development of complex networks theory for economics (see for example [1,2] for general work in economics and [3–8] for specific works in trade). A key idea of complex

networks theory is to acknowledge that the nodes of a network, such as the countries in a trade network, influence each other, not only directly (in a neighbour-to-neighbour relationship), but also indirectly (through intermediate nodes). Taking into account these indirect influences may provide complementary insights to the direct influences.

In the first method, we decompose the annual flow of goods and services, quantified by their money counterpart measured in a common currency, into a sum of three coherent flows that illuminate different aspects of the trade network. The first flow is symmetric, which measures to which extent countries' trade are balanced on a pairwise basis. The second flow is cyclic, in which every country's trade is globally balanced (but not on a pairwise basis). Such a flow may for instance exhibit a four -way cycle where country *A* exports to country *B*, while *B* exports to country *C*, *C* to *D*, and *D* back to *A* for the same amount. The third flow is acyclic, in which the money flow is a union of paths starting from a country in deficit and finishing to a country in surplus. If *A* imports from *B* that imports for the same quantity from *C*, we may consider that *C* is the actual end creditor of *A*, rather than *B* as the usual direct measures of deficit would consider. The resulting indirect deficits or surpluses between two countries provide a more comprehensive view of the global trade between them than the mere direct flow.

The relevance of considering the indirect flows can be illustrated with the example of the Netherlands. This country plays the role of a hub in the trade network, with imports from the rest of the world transiting through the Netherlands to the other European countries. The direct measure would only note that the Netherlands have a trade surplus with all European countries, neglecting that most of the trade only transits through the Netherlands from an initial exporter to a final importer. The indirect measure cleans these network-related effects to reveal the ultimate trade debtors and creditors. The indirect measure is thus also a relevant tool to assess the competitiveness of a country. This example illustrates the case of a chain of production with goods transiting through the Netherlands, but the relevance of the indirect measure is more general, and not confined to chains of production. The case of a country *A* exporting wheels to country *B*, which will then export cars (and the wheels herewith) to a country *C* is not fundamentally different from the case of a country *A* exporting beer to country *B*, letting him devote more resources (the ones previously affected to beer production) to wheel production and cars export to country *C*. At the end, country *A* is the ultimate creditor and country *C* the ultimate debtor, given the resources the former used for the final consumption of the latter.

This Flow Decomposition Method and the associated notion of indirect trade deficit are the main conceptual innovations of this paper. These tools bear some superficial resemblance with the cycle, middleman, in and out statistics developed in [9]. The latter

are defined from the direct interactions of three agents, e.g. the considered cycles are of length three; it can therefore be seen as a bottom-up approach towards a network-theoretic view of trade, identifying patterns of trade just above the single node/edge level. By contrast our approach takes a top-down approach, explaining the total flow as a sum of smaller flows, yet possibly involving a large number of nodes, thus still global in nature.

In the second method, we make a thought experiment in which we follow the random tribulations of a dollar travelling randomly through the trade network. At stationarity, the fraction of time spent by the random dollar, called the PageRank [10], is a measure of the centrality of the country in the trade web. This measure of centrality is related to the GDP, which can be seen as a direct measure of centrality, but corrects it by taking into account the centrality of the trade partners as well (the relevance of this measure in this context has already been evidenced [11]). Taking the logic one step further, we consider the expected time for a dollar starting from country *A* to reach *B* and get back to *A*, which is called the commute time between *A* and *B*, and can be seen as an economic distance between *A* and *B*. More trade ties between *A* and *B*, either direct or indirect (through common intermediate partners), correspond to a shorter distance, i.e. a tighter integration of these countries' economies. Using Principal Component Analysis—a classic spectral dimensionality reduction technique—we can visualize the countries as points in the plane, so that the usual square Euclidean distance is approximately the commute-time distance. Repeating this figure year after year provides an animated picture of the world economy or a region thereof, where the evolution of individual or collective distances can be tracked. In that the commute-time distance is symmetric, thus blind to the imbalances of particular trade relations, it acts as a complement to the first method.

Trade integration between two countries is commonly apprehended through bilateral trade-to-GDP ratio. The larger the ratio the more integrated the country with its partners. This traditional measure is direct in the sense that this statistics does not take into account the position, or centrality, of the trade partners in the network. Let us consider a mostly autarkic country *A*, trading only with country *B*. If *B* trades with many partners, then *A* is indirectly integrated within the trade network. In particular it gives *A* access to the world markets, and makes it sensitive to the fluctuations of the global economy, much more than if *B* were itself quasi-autarkic. The relevance of considering the indirect integration in the trade network will be illustrated in the applications where core and peripheral European countries follow distinct dynamics since the adoption of the euro. Indirect measures of the trade integration can be further interpreted as exposures to the propagation of a small perturbation of one country's activity to

Table 1. Countries sample.

	Countries	Category
1	Austria	Euro
2	Belgium-Luxembourg	Euro
3	Finland	Euro
4	France	Euro
5	Germany	Euro
6	Ireland	Euro
7	Italy	Euro
8	Netherlands	Euro
9	Portugal	Euro
10	Spain	Euro
11	Greece	Euro
12	Slovenia	Non Euro
13	Slovakia	Non Euro
14	Estonia	Non Euro
15	Bulgaria	Non Euro
16	Czech Republic	Non Euro
17	Denmark	Non Euro
18	Hungary	Non Euro
19	Latvia	Non Euro
20	Lithuania	Non Euro
21	Poland	Non Euro
22	Romania	Non Euro
23	Sweden	Non Euro
24	United Kingdom	Non Euro

Countries that did not adopt the Euro in 1999 (or 2002 for Greece) are classified as Non Euro countries. Euro and Non Euro countries are jointly referred to as European countries.

doi:10.1371/journal.pone.0083448.t001

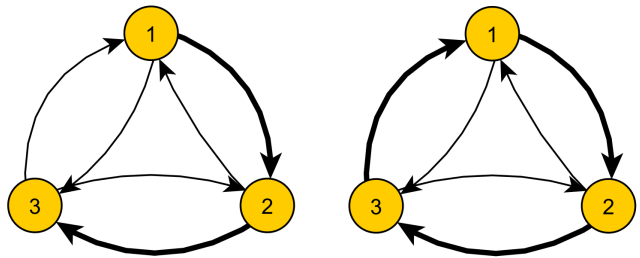


Figure 1. Example of the influence of non-local flows. We show two situations where node 1 has an apparent deficit towards node 2. On the left, the deficit of node 1 is transferred from node 2 to node 3, while on the right the exchanges have been brought to an equilibrium. doi:10.1371/journal.pone.0083448.g001

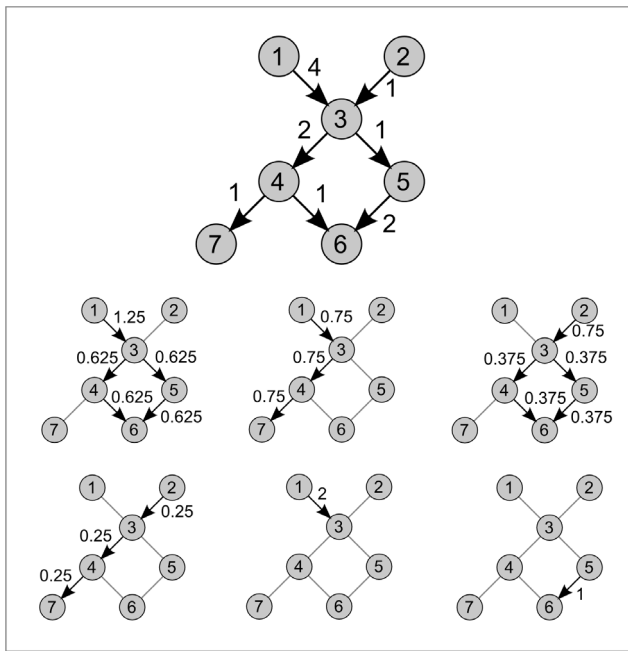


Figure 2. Example of a decomposition in flows. The original graph (top) is acyclic, and is decomposed in six flows, such that the flows are most spread out, by a repeated application of problems (4) to (6).

doi:10.1371/journal.pone.0083448.g002

another country. This tool can be seen as one possible mathematical modelling of the shock propagation, through direct and domino effects, in a globalized economy.

As a case study, we show how these indirect measures complement their direct counterparts in the context of the European trade. We especially study the role of the Euro in the development of trade within Europe. The benefit of sharing a common currency (by decreasing the cost of cross-border transactions) depends on the degree of trade integration. The higher the trade integration, the larger the benefits. It is therefore crucial to dispose of fine measures of trade integration. We show how our methods can better capture the complexity of the trade network as complement to the usual direct measures.

Materials and Methods

Data

We study the network of trade flows between 24 countries of the European Union, using data provided by the International Monetary Fund (IMF) and the World Bank (WB). The two datasets provide different information about the network: the IMF dataset contains the total exports between each pair of countries of the European Union in current US Dollar value, while the WB dataset provides the gross domestic product (GDP) of each country and the consumer price index. By combining those two datasets, we build a network of trade flows between European countries. Since each export from a country i to a country j results in a flow of money in the opposite direction, we represent this data in a network of flows of currencies where each weighted and directed edge (j,i) represents the total exports of good and services from i to j . The internal demand of each country is represented as a loop (i,i) given by $\text{GDP} - (\text{total exports} - \text{total imports})$. All quantities are expressed in USD 2000, such that results are independent of inflation or exchange rate changes. Though expressing all data in a same currency is crucial, the choice of the currency (USD, EUR or other) is not relevant, given our methodology.

The data ranges from 1993 to 2007. By starting in 1993, we avoid the potential structural break related to the removal of EU

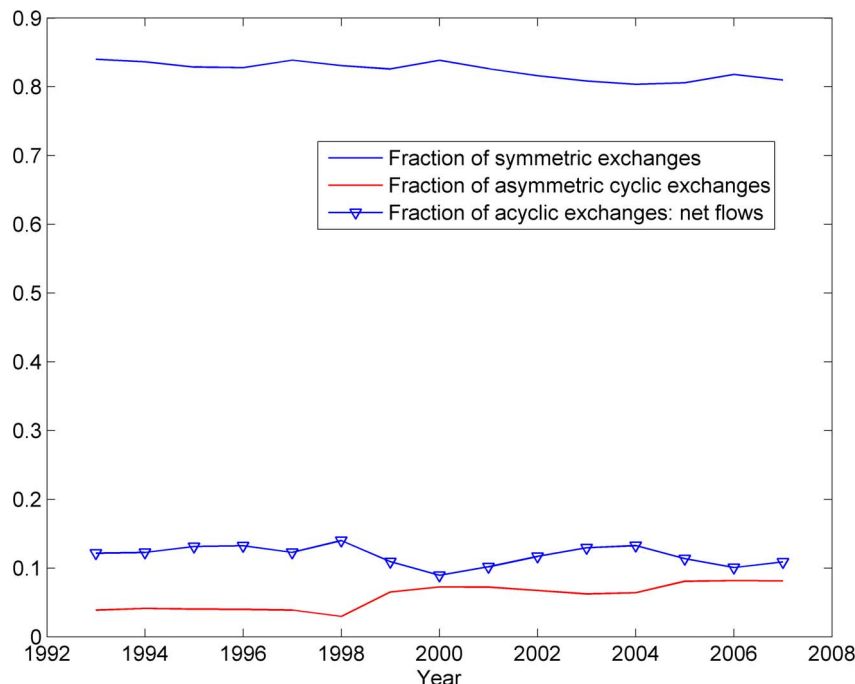


Figure 3. Flow decomposition of trade in the Eurozone. Decomposition of the annual trade flows into symmetric, asymmetric cyclic and asymmetric acyclic components.

doi:10.1371/journal.pone.0083448.g003

	1993	1994	1995	1996	1997	1998	1999	2000	2001	2002	2003	2004	2005	2006	2007
Austria	506	600	1,374	1,566	1,253	1,444	1,815	1,851	1,957	1,595	2,771	3,963	4,455	5,657	7,718
Bel-Lux	2,351	3,298	2,333	2,519	4,005	4,792	6,978	5,162	3,907	5,891	9,542	8,273	17,420	26,846	31,497
Bulgaria	57	52	58	64	56	79	84	62	76	107	197	316	327	299	701
Czech	154	174	315	374	225	206	266	303	203	-141	-363	-59	2,468	3,499	4,512
Denmark	493	1,097	1,185	1,223	724	617	1,257	783	907	895	973	701	2,046	954	3,041
Estonia	5	4	-15	32	-15	37	-26	-65	9	7	44	117	354	580	393
Finland	-442	-718	-534	-169	-235	-424	382	558	700	558	744	795	2,001	1,766	1,455
France	3,371	5,306	8,626	8,107	5,281	4,516	9,756	10,685	11,772	12,369	18,987	24,442	28,213	29,123	38,980
Germany	10,314	10,706	14,316	13,941	11,114	6,111	24,662	25,445	26,355	23,526	34,330	44,480	58,906	72,130	82,733
Greece	1,158	1,590	1,927	1,569	1,215	1,131	1,615	1,650	1,602	1,834	2,585	3,309	3,668	4,037	5,456
Hungary	256	316	244	233	124	-483	-444	-456	-344	-237	-6	650	1,222	1,755	2,327
Ireland	-919	-950	-2,032	-2,274	-2,612	-2,498	-3,055	-2,522	-1,673	-1,024	-1,703	-1,635	-1,811	154	1,456
Italy	3,005	3,658	5,199	4,508	4,113	3,413	6,392	7,272	7,734	8,035	12,456	16,841	18,142	18,000	22,598
Latvia	-99	46	154	118	98	90	91	64	86	81	128	159	258	376	476
Lithuania	-48	4	8	58	74	91	34	-44	43	45	71	-177	113	-228	364
Poland	314	284	428	594	706	766	821	722	444	623	739	1,029	1,614	2,700	4,892
Portugal	458	273	225	213	217	240	957	1,007	1,047	1,101	1,724	2,100	2,774	2,442	3,231
Romania	-45	-32	44	-129	-35	13	8	53	7	88	45	109	297	611	1,537
Slovakia	37	10	47	63	58	37	-29	-57	-76	-106	162	-203	-794	-1,673	-1,441
Slovenia	86	107	147	103	117	129	149	158	153	178	224	483	491	722	724
Spain	1,108	1,282	2,942	2,420	1,914	2,291	4,291	3,713	4,235	4,832	6,986	10,364	13,872	13,039	17,220
Sweden	-316	-854	-821	-967	-729	-734	170	1,035	1,129	554	1,360	2,345	3,829	2,852	3,012
UK	3,135	3,277	4,143	1,475	-2,144	-1,119	2,725	2,396	6,333	6,866	13,282	23,302	26,006	25,415	36,956
World	-24,067	-29,661	-36,155	-44,828	-57,158	-57,827	-48,532	-61,441	-51,370	-51,584	-59,152	-81,854	-122,150	-154,176	-184,576

Figure 4. Evolution of the direct and indirect measures of trade imbalances for the Netherlands. The figures in each cell correspond to direct trade surpluses (+) or deficits (−) of the Netherlands toward countries listed on the rows. The colors correspond to the indirect measures of trade imbalances, as computed by the Flow Decomposition Method, with ultimate surpluses in green and ultimate deficits in red.
doi:10.1371/journal.pone.0083448.g004

internal customs (which had an impact on the recording of trade flows). By ending in 2007, we avoid the specific impact of the financial crisis. We therefore have a time period of 15 years. Our dataset originally contains the data of the 27 members of the European Union. However, Malta and Cyprus have been removed from the dataset since large parts of their data were missing. Also, Belgium and Luxembourg are recorded together for the so-called Belgium-Luxembourg Economic Union (see Table 1 for a list of the countries in the sample). Finally, one obtains a digraph $G(V, E)$ of 24 nodes (V) and 576 weighted directed edges (E) and loops represented by a weighted adjacency matrix $A : \{a_{ij}\}_{i,j=1}^n$, where a_{ij} is the weight of the edge (i, j) . In this paper, we use the notation G to represent the network and its matrix representation is written A .

Measuring indirect trade imbalances with the Flow Decomposition Method

Trade imbalance is usually apprehended through trade deficit-to-GDP ratio. This measure is direct in the sense that it only considers the situation with respect to direct trade partners. However, one could imagine countries having a trade deficit with countries that are themselves in deficit towards other countries, such that the deficits actually just transit through this country to a final trade creditor. We thus propose a global method emphasizing the trade imbalances from originary trade deficit countries to final trade surplus countries, therefore cleaning the picture from intermediate countries. This method relies on an original flow decomposition.

We represent the trade network by its adjacency matrix $A : \{a_{ij}\}_{i,j=1}^n$; the entry a_{ij} represents the amount of money flowing from country i to country j , and the difference between a_{ij} and a_{ji} renders the imbalance in trade between both countries. However, this observation is only a first-order approximation of the exact asymmetry of trade, that does not take into account the relationship between the countries i and j and the rest of the graph. A very different picture might arise when looking at the graph as a whole. For example, let us consider the example in Fig. 1, showing the interactions of three countries. In both examples, country 1 has a deficit towards country 2. However, depending on the value of the deficit of country 2 to country 3, the deficit of country 1 might be (or not) transferred to country 3, and hence country 3 is the actual creditor of country 1 rather than country 2. Finally, if country 3 has also a deficit towards country 1, every country is in global balance even though every bilateral relationship is imbalanced and creates a cyclic circulation of value. Albeit very simple, this example illustrates the need of extracting more complex information from the adjacency matrix than the net flow along single edges considered separately.

To do this, the trade network is separated in three components: symmetric, cyclic and acyclic, yielding the following expression for the adjacency matrices: $A = A^S + A^C + A^{AC}$.

These three components represent three kinds of interactions ongoing in the trade network: pairwise trade, cyclic trade and acyclic flows going from debtors to their indirect creditors. We obtain these components from the original network through a succession of optimization models, that in succession provide us

	1993	1994	1995	1996	1997	1998	1999	2000	2001	2002	2003	2004	2005	2006	2007
Austria	522	719	978	915	711	699	473	-181	-399	-491	-1,338	-964	-1,600	-1,148	-1,947
Bel-Lux	-1,724	-3,280	-6,085	-5,066	-5,917	-8,274	-7,484	-9,969	-10,563	-13,153	-18,051	-30,045	-40,663	-45,850	-62,427
Bulgaria	43	37	81	108	93	141	186	86	123	119	143	131	57	55	-203
Czech	297	663	852	951	695	452	493	516	451	53	-76	-699	-2,022	-2,885	-4,903
Denmark	-66	102	109	392	78	356	169	-439	-240	-28	-340	-687	-2,378	-1,706	-2,062
Estonia	18	13	24	32	55	60	31	36	82	101	139	135	158	323	305
Finland	-583	-803	-1,178	-536	-509	-881	-850	-826	-263	-448	197	253	-41	-153	-587
Germany	-8,071	-13,943	-16,191	-10,587	-11,038	-14,117	-12,035	-17,537	-14,741	-17,596	-23,723	-35,345	-42,380	-39,358	-59,386
Greece	1,480	1,620	2,266	2,341	2,415	2,393	2,702	2,733	1,976	2,106	3,215	4,686	4,045	4,143	5,949
Hungary	289	319	287	412	292	388	150	14	-200	-218	-382	-833	-720	-518	-1,117
Ireland	-1,822	-1,670	-2,981	-2,876	-2,519	-3,534	-3,982	-3,155	-2,339	-1,817	-3,709	-3,847	-4,782	-3,971	-3,586
Italy	-5	177	2,040	-3,790	-1,283	-2,751	-1,136	-599	-2,727	-2,530	-4,861	-10,093	-14,972	-16,897	-27,676
Latvia	29	21	37	52	87	105	104	97	86	86	115	122	116	226	316
Lithuania	27	35	34	88	95	73	29	7	60	43	-4	-324	-740	-216	-55
Netherlands	-3,371	-5,306	-8,626	-8,107	-5,281	-4,516	-9,756	-10,685	-11,772	-12,369	-18,987	-24,442	-28,213	-29,123	-38,980
Poland	425	477	994	1,593	1,619	1,771	1,825	1,207	947	817	1,155	538	-1,037	276	-3,629
Portugal	1,470	1,424	1,293	981	1,030	1,370	1,826	2,758	3,540	2,349	3,391	3,320	513	263	-398
Romania	352	102	134	248	251	422	242	38	19	33	423	-58	28	-488	-1,225
Slovakia	28	39	140	264	179	69	-58	-192	-36	-50	196	155	-656	-1,229	-4,197
Slovenia	38	141	100	425	663	551	571	357	331	381	731	729	40	101	-427
Spain	3,800	4,511	5,077	4,364	6,080	7,726	9,989	9,393	7,148	6,323	6,819	6,365	5,459	4,281	-3,198
Sweden	-375	-279	-436	152	504	470	244	-107	760	492	405	416	-472	-698	-1,055
UK	8,410	9,666	12,863	10,097	8,443	9,661	9,125	4,841	6,203	7,192	11,873	17,159	11,423	685	17,904
World	45,217	50,719	68,162	64,595	53,951	51,855	48,393	25,376	28,902	30,411	50,671	56,374	54,611	37,920	46,914

Figure 5. Evolution of the direct and indirect measures of trade imbalances for France. The figures in each cell correspond to direct trade surpluses (+) or deficits (−) of France toward countries listed on the rows. The colors correspond to the indirect measures of trade imbalances, as computed by the Flow Decomposition Method, with ultimate surpluses in green and ultimate deficits in red.
doi:10.1371/journal.pone.0083448.g005

the symmetric (G^S), the cyclic (G^C) and the acyclic (G^{AC}) components.

The acyclic component is certainly the most insightful part of the trade decomposition. The transfer of money from countries that accumulate deficits to countries that make surpluses is further decomposed into elementary flows from single country to single country that provide new insight on the exact transfers between individual countries. In particular any country is associated with a typically small number of final trade creditors or debtors, leading to a simpler, more readable picture than the one provided by direct deficits or surpluses, as illustrated in the Results and Discussion section.

The symmetric flow

The symmetric component is obtained with the adjacency matrix A^S whose entries are $a_{ij}^S = \min(a_{ij}, a_{ji})$. A simple observation shows that there is no larger network (larger in the sense that the weight of an edge could be larger than this solution) satisfying to the condition of symmetry. In other words, a_{ij}^S is the trivial, unique, solution x_{ij} to the optimisation problem:

$$\begin{aligned} & \underset{x_{ij}}{\text{maximize}} && \sum_{ij} x_{ij} \\ & \text{subject to} && x_{ij} = x_{ji}, \forall i, j, \\ & && 0 \leq x_{ij} \leq a_{ij}, \forall i, j. \end{aligned} \quad (1)$$

The cyclic flow

From the resultant network G^{AS} of adjacency matrix $A^{AS} = A - A^S$ —which does not contain any bidirectional edge—we extract the cyclic component by maximizing the flow circulating on the edges of G^{AS} while imposing that the amount of incoming and outgoing flows in each node are equal, and that the flow on each edge does not exceed its weight. It can be written formally as a max-flow-like optimization problem

$$\begin{aligned} z_1 &= \underset{x_{ij}}{\text{maximize}} && \sum_{i,j \in V} x_{ij} \\ & \text{subject to} && \sum_{j \in V} x_{ij} - \sum_{j \in V} x_{ji} = 0, \forall i, \\ & && 0 \leq x_{ij} \leq a_{ij}^{AS}, \forall i, j \in V, \end{aligned} \quad (2)$$

A solution to this problem, found by standard linear programming methods, is a cyclic component of the graph. However there may be typically many such cyclic flows, all with the same total value. We want to choose a solution that is as spread out as possible among the different extreme solutions, as it is the most ‘neutral’, not favouring one cycle over another. A common ‘diversity index’ [12,13] indicating how fairly a resource is distributed over several actors (e.g., market shares for companies or food for species) is given by the square of quantities attributed to every actor. For instance, if a unit resource is to be shared between three actors with quantities α, β, γ , then the sum of squares $\alpha^2 + \beta^2 + \gamma^2$ is minimal when $\alpha = \beta = \gamma = 1/3$. This is akin to a maximum entropy argument (even though the probabilistic context is not explicit here), as indeed the diversity index is equivalent to Rényi’s entropy

	1993	1994	1995	1996	1997	1998	1999	2000	2001	2002	2003	2004	2005	2006	2007
Austria	9,570	10,470	9,023	10,500	7,846	7,477	6,080	6,743	5,966	6,780	9,893	12,958	16,141	24,298	29,469
Bel-Lux	1,893	3,550	820	1,025	-67	-2,449	-1,407	-3,552	-6,243	-10,396	-13,394	-15,421	-18,839	-28,185	-36,943
Bulgaria	377	424	858	549	401	519	494	366	425	611	817	1,213	1,392	1,302	1,362
Czech	2,394	2,764	5,598	2,979	2,451	967	127	4	103	1	-567	-5,988	-8,531	-9,795	-13,449
Denmark	-1,720	-353	-410	-485	-1,173	-230	-378	-1,308	-1,008	-570	364	-45	-927	688	2,762
Estonia	43	94	204	222	244	279	77	103	199	210	343	533	870	1,431	2,044
Finland	87	-611	-1,198	-39	160	313	793	628	751	1,249	1,905	3,928	4,815	4,117	6,708
France	8,071	13,943	16,191	10,587	11,038	14,117	12,035	17,537	14,741	17,596	23,723	35,345	42,380	39,358	59,386
Greece	2,064	2,466	2,365	2,145	1,870	2,406	2,857	2,871	3,300	3,607	5,194	7,297	7,427	7,472	10,313
Hungary	2,053	2,429	2,512	2,941	-195	602	-194	-998	-1,855	-2,216	-1,945	-2,807	-3,367	-3,140	-5,620
Ireland	-2,367	-2,913	-4,246	-4,410	-4,507	-7,850	-5,804	-5,273	-7,280	-2,967	-4,377	-3,543	-2,654	-1,604	585
Italy	-3,075	412	3,434	-2,184	742	1,443	1,528	5,976	6,592	9,572	12,254	17,123	16,999	14,149	16,817
Latvia	158	284	425	367	399	459	240	249	376	485	690	695	684	1,341	2,204
Lithuania	203	389	402	586	727	776	460	291	518	904	1,326	1,089	807	1,531	1,756
Netherlands	-10,314	-10,706	-14,316	-13,941	-11,114	-6,111	-24,662	-25,445	-26,355	-23,526	-34,330	-44,480	-58,906	-72,130	-82,733
Poland	2,080	1,633	2,490	5,323	5,242	4,493	4,211	2,307	-211	581	423	-1,127	-3,761	-1,351	3,101
Portugal	992	720	87	840	1,114	1,670	1,545	1,754	1,064	1,736	2,832	4,689	5,689	4,062	6,039
Romania	640	544	925	1,035	650	1,017	863	665	921	949	1,401	2,404	2,695	3,005	1,912
Slovakia	264	373	1,159	1,088	358	587	721	-122	-22	-78	-3,082	-4,285	-3,732	-3,842	-8,600
Slovenia	-143	-108	-208	-580	-469	-376	-422	-275	-314	-395	-377	725	-374	-611	-809
Spain	3,953	5,465	7,470	6,724	7,184	9,533	11,967	10,360	12,066	14,588	20,676	30,960	35,356	35,651	51,146
Sweden	1,491	2,589	4,155	3,444	3,415	4,141	3,947	2,949	3,849	5,158	7,944	10,800	11,995	13,238	18,839
UK	13,613	17,532	27,853	24,679	19,020	22,312	17,070	12,043	16,903	22,064	39,681	55,841	55,275	51,714	74,011
World	53,164	71,920	117,165	106,128	82,926	86,032	69,386	38,869	59,107	86,904	129,566	188,243	172,163	195,826	253,290

Figure 6. Evolution of the direct and indirect measures of trade imbalances for Germany. The figures in each cell correspond to direct trade surpluses (+) or deficits (−) of Germany toward countries listed on the rows. The colors correspond to the indirect measures of trade imbalances, as computed by the Flow Decomposition Method, with ultimate surpluses in green and ultimate deficits in red.
doi:10.1371/journal.pone.0083448.g006

[14]. We therefore choose a particular maximum flow with the following sum-of-squares minimization problem:

$$\begin{aligned}
 z_2 = \underset{x_{ij}}{\text{minimize}} \quad & \sum_{i,j \in V} x_{ij}^2 \\
 \text{subject to} \quad & \sum_{i,j \in V} x_{ij} = z_1^* \\
 & \sum_{j \in V} x_{ij} - \sum_{j \in V} x_{ji} = 0, \forall i \in V, \\
 & 0 \leq x_{ij} \leq a_{ij}, \forall i, j,
 \end{aligned} \quad (3)$$

Here z_1^* is the optimal cost of problem (2). Simply stated, the solution of problem (3) chooses among all optimal solutions of problem (2) the cyclic flow that spreads out the most on the network.

The acyclic flow

The remaining links not taken into account in this solution form the acyclic network G^{AC} , of adjacency matrix $A^{AC} = A - A^S - A^C$.

The acyclic component can be further decomposed into elementary flows, where each flow represents a certain amount of money flowing from a debtor country to a creditor country. These elementary flows represent how countries create debts or surpluses towards each other, not just directly but also through intermediates nodes. The economic relevance of indirect creditor/debtor relations, already discussed in the Introduction, is illustrated below in the Results and Discussion section.

The decomposition of the acyclic component into these elementary flows is typically non unique. We can always choose a decomposition such that every country is never both a debtor to

some countries and a creditor to some others. Indeed, if an elementary flow leaves from i to j and another flow from j to k , then at least a part of this flow can be merged into a longer flow from i to k . Such a decomposition has the advantage of simplicity of interpretation, as every country is either a pure debtor or a pure creditor, or none.

Among all possible such decompositions, we choose the one that spreads the flow between two countries as much as possible on all possible trade routes, similarly to the cyclic decomposition. We now give the details of how the elementary flows are computed.

We start from an arbitrary acyclic weighted graph G (as we suppose that we have already removed the symmetric and cyclic parts), consisting of a set of nodes V and a set of edges E and represented by its weighted adjacency matrix $A = \{a_{ij}\}_{i,j=1}^{|V|}$. The algorithm proceeds by repeated decompositions into single-source single-destination flows, which we call elementary flows. In this context, sources are debtors and destination are creditors.

In the first iteration, the sources S are taken as the zero-indegree nodes and the destinations D are the zero-outdegree nodes. Without loss of generality, we assume that the flow is connected (otherwise we treat connected components one after another). This ensures in particular that no node is both a source and a destination. Elementary flows are computed between S and D , in the way that we explain hereafter. Then those flows are withdrawn, revealing a smaller flow to be decomposed, with possibly new sets of sources and destinations, on which a new iteration is performed, and so on until the entire acyclic flow has been decomposed. One single iteration of this algorithm consists of three steps, which we now detail.

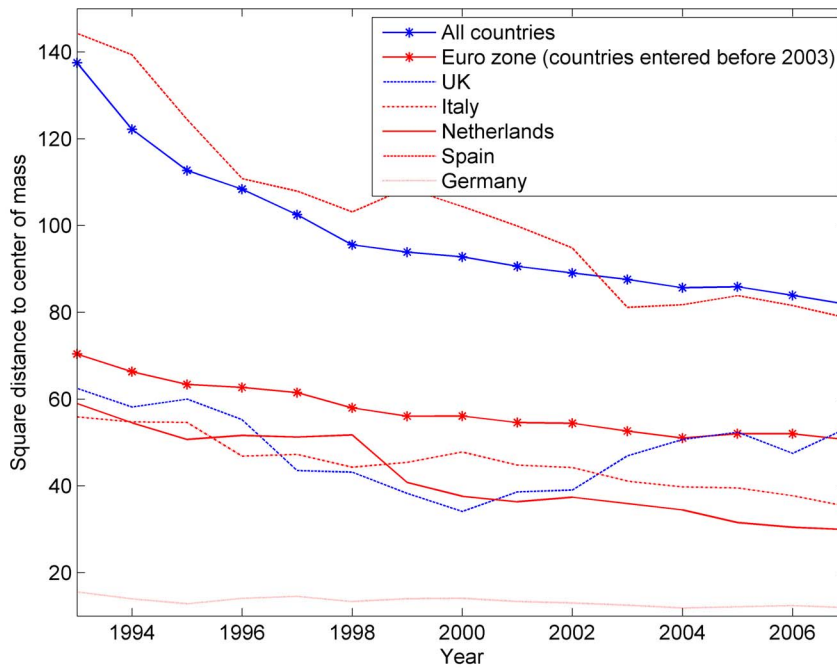


Figure 7. Evolution of the variance of EU countries, Euro zone countries, and evolution of the square commute-time Euclidean distance of some countries to the centre of mass of Europe. Centres of masses and variances are computed with weights proportionally to countries' PageRank. A falling distance to the centre of mass indicates an increasing integration of country's economy with its European partners'. A falling variance of a group of countries indicates a closer and closer integration of all countries with one another.
doi:10.1371/journal.pone.0083448.g007

First, the largest possible flow from the sources to the destinations is computed with a classic maximum flow problem:

$$w_1 = \underset{x_{ij}}{\text{maximize}} \quad \sum_{i \in S, j \in V} x_{sj}$$

$$\text{subject to} \quad \sum_{j \in V} x_{ij} - \sum_{j \in V} x_{ji} = 0, \forall i \in V \setminus \{D \cup S\}, \quad (4)$$

$$0 \leq x_{ij} \leq a_{ij}, \forall i, j \in V$$

A solution to this problem is not unique in general. It is possible, for instance if there exists a bottleneck in the network, that the max flow goes from one source to one destination, or from another source to another destination, or may be shared between the two paths. Similarly to the cycle decomposition, we therefore choose a maximum flow that is as spread out as possible among the different extreme solutions, with the following sum-of-squares minimization problem:

$$w_2 = \underset{y^{sd}, x_{ij}^{sd}}{\text{minimize}} \quad \sum_{s \in S, d \in D} (y^{sd})^2$$

$$\text{subject to} \quad \sum_{s \in S, d \in D} y^{sd} = w_1^*,$$

$$\sum_{j \in V} x_{sj}^{sd} = y^{sd} \quad \forall s \in S, d \in D,$$

$$\sum_{j \in V} x_{ij}^{sd} - \sum_{j \in V} x_{ji}^{sd} = 0, \forall i \in V \setminus \{S \cup D\}, \quad (5)$$

$$s \in S, d \in D,$$

$$\sum_{s \in S, d \in D} x_{ij}^{sd} \leq a_{ij}, \forall i, j \in V,$$

$$0 \leq x_{ij}^{sd}, \forall i, j \in V, s \in S, d \in D.$$

Here w_1^* is the optimal cost of problem (4). The solution of problem (5) decomposes the total flow from sources to destinations into individual flows from single source s to single destination d , of value y^{sd} , and chooses to spread the maximum flow w_1^* as much as possible between the individual single-source single-destination flows y^{sd} .

We want further determine the intermediate nodes and edges by which the flow y^{sd} circulated, i.e. to determine the contribution x_{ij}^{sd} on edge ij to the flow y^{sd} . As once again those contributions can be chosen in several ways, we find the most spread out decomposition by minimizing the sum of squares of x_{ij}^{sd} while maintaining the previously found optimal values y^{sd*} for the single flows.

$$w_3 = \underset{x_{ij}^{sd}, x_{ij}}{\text{minimize}} \quad \sum_{s \in S, d \in D} (x_{ij}^{sd})^2$$

$$\text{subject to} \quad \sum_{j \in V} x_{sj}^{sd} = y^{sd*} \quad \forall s \in S, d \in D,$$

$$\sum_{j \in V} x_{ij}^{sd} - \sum_{j \in V} x_{ji}^{sd} = 0, \forall i \in V \setminus \{S \cup D\}, \quad (6)$$

$$s \in S, d \in D,$$

$$\sum_{s \in S, d \in D} x_{ij}^{sd} \leq a_{ij}, \forall i, j \in V,$$

$$0 \leq x_{ij}^{sd}, \forall i, j \in V, s \in S, d \in D.$$

This ends the iteration. By subtracting the flows on each edge (given by x_{ij}^{sd}) from the original graph, one results in several

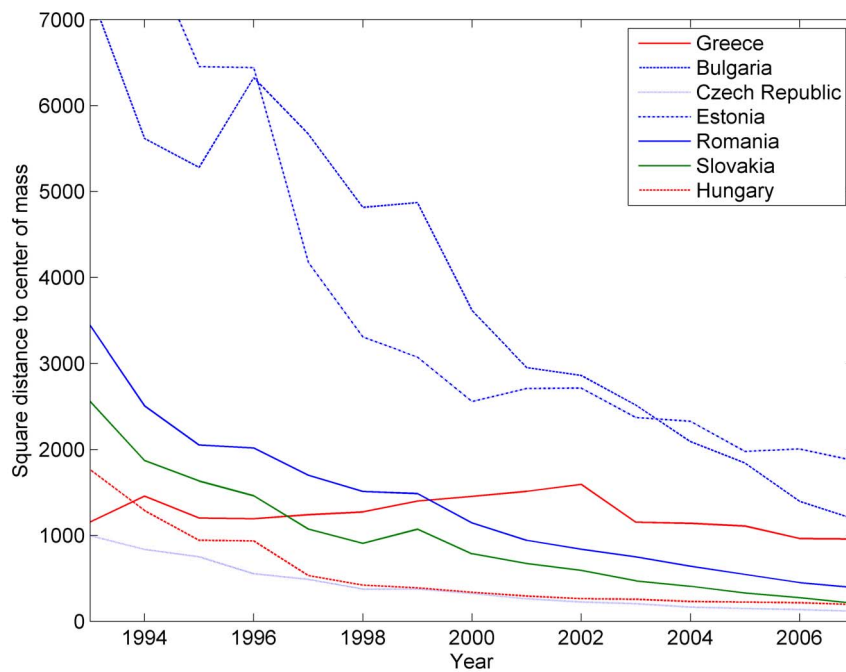


Figure 8. Evolution of the square commute-time Euclidean distance of outlier economies to the centre of mass. Note the contrast between the former socialist economies and Greece.
doi:10.1371/journal.pone.0083448.g008

disconnected components, on which the same process can be applied recursively until the graph has been totally decomposed.

Computation and example

Algorithmically, the optimisation problems (2) to (6) take the form of linear or convex quadratic programs that can be solved efficiently with usual methods. An example of such a decomposition is given on Fig. 2, where a flow on the graph is decomposed into 6 different flows, from 3 different sources to 3 different destinations.

Measuring indirect trade integration with the Commute Time Distance Method

The trade integration of a country with another country or group of countries is usually measured by the bilateral trade-to-GDP ratio. The larger the ratio the more integrated the country with its partners. This measure is direct in the sense that this statistics does not take into account the position, or centrality, of the trade partners in the network. We propose to use commute times of a random walking dollar in the trade network as a measure of integration of countries with respect to one another taking into account their direct and indirect ties. A small commute time between two countries implies a small trade distance between those countries, i.e. a high mutual integration.

The random dollar and commute-time distances

The commute-time distance, defined in the general context of random walks over graphs or Markov chains [15,16], proceeds in the present case from a thought experiment.

We imagine that all the money in circulation in the world is materialised in one-dollar notes. We identify one particular note and we track it as it switches from hand to hand. We suppose that every dollar paid out by an individual is randomly uniformly chosen among all the dollars in her possession. For the moment we suppose also time invariance: every two individual who have

economic contacts, have regular economic contacts whose frequency and intensity (measured for instance by the number of dollars exchanged in a year) is constant in time, thus resulting in a constant expected fortune (number of dollars possessed) of individuals through time. The probability of presence of a random walker in a given node of a network is sometimes called the PageRank of the node, in analogy with a well known search tool on the World Wide Web [10], and gives a measure of its centrality in the network. In this case the PageRank is directly proportional to the expected fortune of an individual.

In our case, nodes represent individual countries, and we assume that the random dollar is exchanged at regular discrete-time steps, rather than in continuous time. We can choose a restricted network (e.g., Europe) and perform a random walk on restricted network, which corresponds to the random walk in the global network conditional to the fact that the random dollar stays in the restricted network. In this paper, we study the random dollar walk conditional to the fact that it corresponds to a trade of goods and services produced in the year within Europe. This excludes the non-European countries but also the trade of second-hand goods already accounted for in previous years.

In this network, the PageRank is a truly global quantity which gives a useful indication of the centrality of a country in the network of exchanges, as exemplified in [11]. In this section we enrol another classic tool of random walk theory, namely commute times, at the service of trade networks.

Let τ_{AB} be the so-called hitting time from country A to country B , which is the time of first passage to B for a random note that would start in A . The commute-time distance between countries A and B is defined as the square root of the commute time $\tau_{AB} + \tau_{BA}$. It is a Euclidean distance, which means that every of the n countries can be embedded in \mathbb{R}^n , so that the usual distance between the two points representing A and B coincides with the commute-time distance.

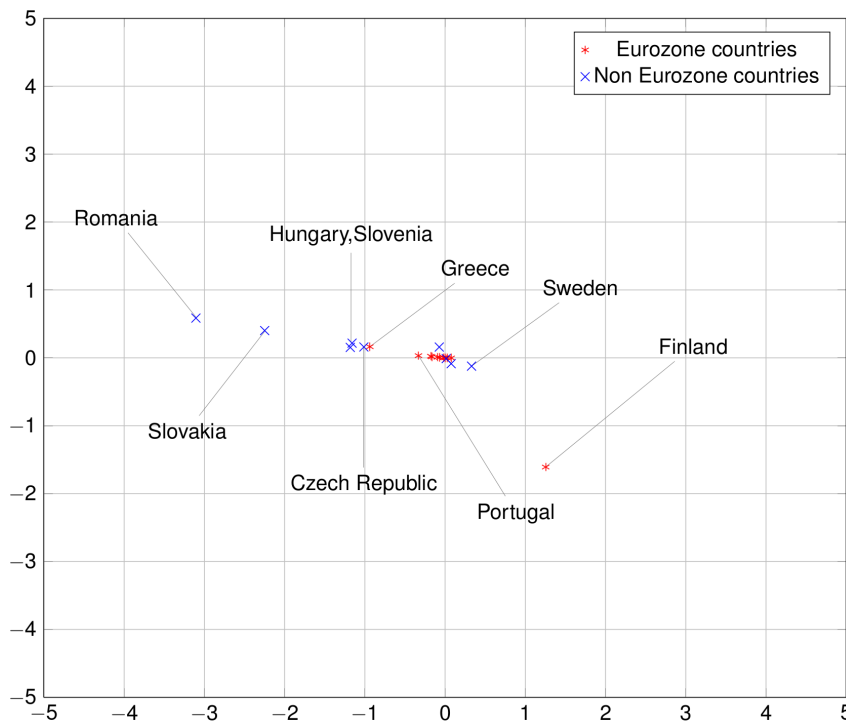


Figure 9. European economies in 1993. The square Euclidean distance between two countries in this 2D representation is an approximation of the random dollar's commute time between those two countries. Compare with Figs. 10 and 11. Note that some countries are outside the bounding box, especially some East European countries such as Bulgaria in the early years. Among Euro zone countries, notice how Greece, Finland and Portugal stay relatively far from the Euro zone cluster and even drifts away from it after the introduction of the Euro.
doi:10.1371/journal.pone.0083448.g009

Interpretation of commute-time distances

The Euclidean commute-time distances embeds the national economies as points in a geometric space, where proximity of two countries indicates that a large fraction of the GDP of both countries participates to trade between them, either directly or through a chain of intermediate partners. Assuming that A trades actively with B , which interacts actively with C (or partners of C), then the commute-time distance between A and C can be relatively short, indicating fairly good mutual integration, even though the direct trade-to-GDP ratio of A towards C is zero.

Commute times can be further interpreted in terms of the propagation of a small perturbation of one country's activity to another country, as the following simplistic thought experiment suggests. Imagine indeed that a new activity is created in country A , and a new dollar is printed that reflects the value of this new activity. In the absence of any knowledge of the nature of this activity, we may suppose that this new dollar will diffuse randomly in the network. The hitting time therefore indicates the speed at which the infinitesimal burst of activity in A is felt in another country B . The same argument goes for an infinitesimal destruction of activity. Therefore our measure of mutual integration of two countries' economies may be identified with the mutual sensitivity of each country to the other's economic health.

Integration within a group of countries

So far we have presented commute-time distance as a pairwise relationship indicating mutual integration of two countries. However we are often more interested in assessing how a country is integrated in the regional or global economy, rather than with a specific partner. Clearly, a regional economy is tightly integrated as a whole, if all the national economies are close to each other in

terms of commute-time distances, which translates into a quick propagation of shocks across the network through direct or domino effects. This can be assessed by the variance of the countries in their Euclidean space representation, which is the average square commute-time distance to the centre of mass of the region. The square distance of one particular country to the centre of mass indicates how integrated this country is with the regional network as a whole, rather than with a specific country.

Computation and representation

We now explain how to compute the commute-time distances. Let Imp be the import matrix, where Imp_{AB} is the amount of imports of A from B , corresponding to a money flow from A to B . The diagonal Imp_{AA} is $GDP_A + Imports_A - Exports_A$, following the idea that the value produced in A but not imported nor exported is akin to an export from A to A . The random dollar's probability transition matrix $P = D^{-1}Imp_{AB}$, where D is the diagonal matrix of strengths: D_{AA} is the sum of row A 's entries of Imp . Let us illustrate this formula on a simplistic example. Consider a country A importing steel from country B for 70 USD and making for 100 USD worth of cars, of which 60 USD are exported and 40 USD are bought locally. The GDP is $100 - 70 = 30$ USD, and $Imp_{AA} = 40$. Then the random dollar will jump from A to B (as counterpart to steel import) with probability $70/110$ and will stay in A (as a counterpart for a car sale) with probability $40/110$. The PageRank vector is given by P 's dominant left eigenvector π , obeying $\pi = \pi P$. If we call Π the diagonal matrix constructed from π , then the Laplacian [16] is $\Pi - \Pi P$, and the commute time between A and B is $\tau_{AB} + \tau_{BA} = (e_A - e_B)^T L^+ (e_A - e_B)$, where e_A is the column characteristic vector of country A (with zeroes everywhere

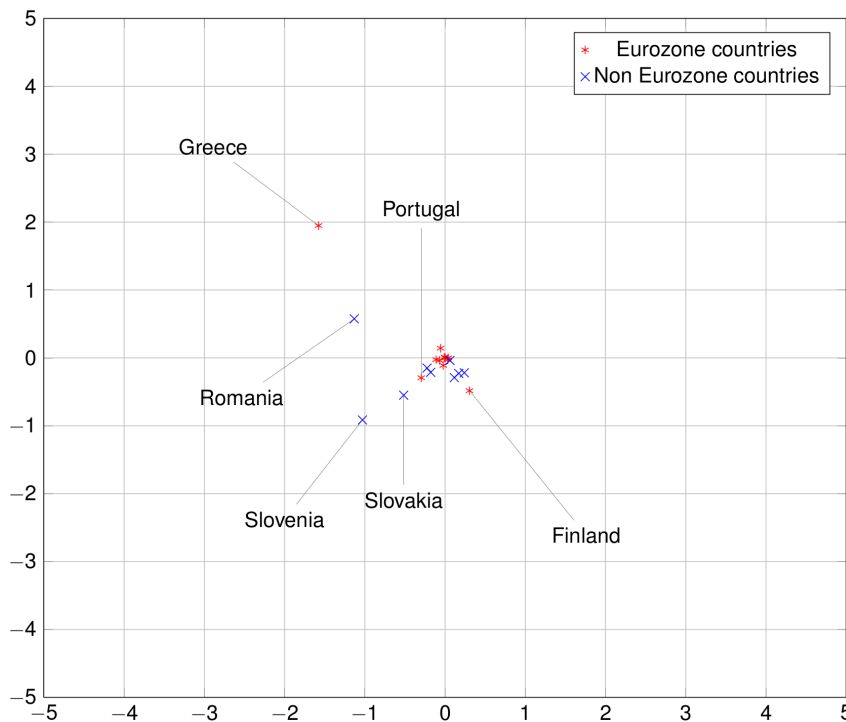


Figure 10. European economies in 2000. Compare with Figs. 9 and 11.
doi:10.1371/journal.pone.0083448.g010

excepted a one at entry A) and L^+ is the pseudo-inverse of the Laplacian [16]. Evidently, the matrix L^+ can be replaced by its symmetric part $(L^+ + L^+T)/2$.

In order to facilitate the visualisation or analysis of data, one can perform a principal component analysis of the n points into k dimensions (for any $k < n$), which amounts to replacing $(L^+ + L^+T)/2$ by its rank k approximation, thus placing the n nodes in a k -dimensional plane. Usually $k=2$ is taken for visualisation purposes, if relevant. This provides an economic interpretation of a classical method of representation of a network [17] called Eigenprojection method in [18]. Repeating the procedure for the data of each year results in a series of images that picture the evolution of European economies year after year.

Results and Discussion

Indirect trade imbalance in Europe

We now illustrate how the tools derived from the flow decomposition approach can help to better understand the European trade network. The symmetric, cyclic and acyclic components of the inter-country trade structures represent three types of economic interactions. The symmetric part reflects the pairwise exchanges where both countries have neither trade deficit nor surplus. The cyclic part reflects the same kind of interaction, but circulating over a larger number of actors. Symmetric interactions can be seen as cycles of length 2. Finally, the third part contains the transfers of money that flow from countries that accumulate deficits to surplus-making countries. The study of those three components provides insights on the evolution of the European trade network.

Firstly, the largest fraction of the European trade is made of symmetric exchanges (Fig. 3), which reflects the tendency of countries to restrain, to a certain extent, their imbalances. A fraction of, say, 90% of symmetric exchanges means that, on average,

bilateral direct imbalances are equal to 10% of total trade. Secondly, as regards the fraction of cyclic exchanges, its part is initially close to zero, indicating that balanced clusters of countries are a relatively small share of the total trade network. The trend from 1998 is rising however, which indicates a growing tendency of countries to trade and balance their trades inside clusters of countries, rather than on bilateral basis. Finally, the fraction of acyclic exchanges remains significant at all considered years.

This acyclic component provides a new way to consider the trade imbalances in a network of countries. Contrarily to the traditional approach focusing on the trade deficit-to-GDP between two countries, a direct measure, the tool we propose goes farther by considering the indirect exposures to get at the end a finer understanding of the ultimate debtors and creditors of trade flows. The example of the Netherlands, see Fig. 4, is illustrative in this respect. Considering the direct measures (trade deficit-to-GDP), the Netherlands have a growing trade surplus toward Germany and Spain over the whole period. These trade surpluses can reflect a rising relative competitiveness, with a trade surplus emerging from rising exports and falling imports, but they can also reflect network effects not specific to these pairs of countries. Indeed, trade surpluses can also be related to the general organization of the world trade and the respective specialization of the countries in the world production. The Netherlands for example play the role of a hub in the European trade by importing huge volumes from the world and redistributing these in Europe through exports. The indirect debtor/creditor relationships we propose precisely accounts for the network effects in view to find the ultimate creditors of Spain or Germany that trade with them through the Netherlands, and cleans the relationships between the Netherlands and Spain or Germany from those flows. Though trade surpluses of the Netherlands towards Spain and Germany persist over the whole period according to the direct measures, an indirect surplus is only reported toward Spain.

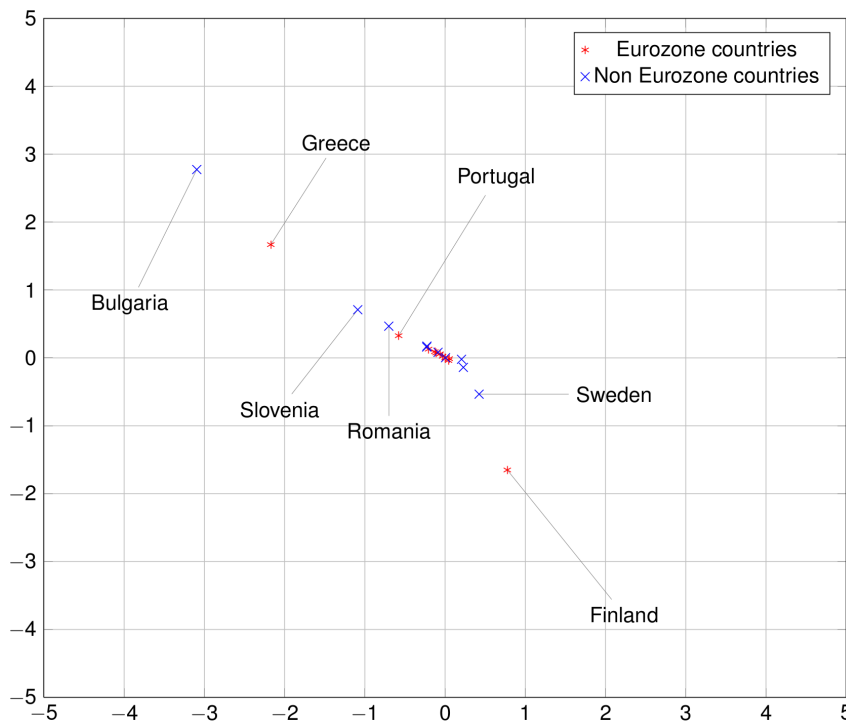


Figure 11. European economies in 2007. Compare with Figs. 9 and 10.
doi:10.1371/journal.pone.0083448.g011

The relevance of the indirect measure of the trade deficit is double. First, it reveals ultimate deficits/surpluses, cleaned from transit node effects. As such, the indirect measure is an analytic complementary tool to the direct trade deficit-to-GDP measure. To the extent that a direct trade deficit-to-GDP can reveal both a relative competitiveness problem and a specific role in the world trade network (a specialization or a role of hub), its interpretation might be delicate. The indirect measure by neutralizing the network component of the deficit can thus be considered as a more precise measure of competitiveness. It better captures specific competitiveness problems since it controls for country specializations in the trade network. Secondly, it reduces the size of the information matrix. The indirect measures reduce the bilateral trade surpluses/deficits matrix to a relatively small subset of ultimate bilateral trade deficits/surpluses. Countries who measure the evolution of their competitiveness can thus focus on the sole countries with which indirect trade deficits prevail. For example, Fig. 5 shows that France may focus on restoring competitiveness with respect to Germany and Belgium-Luxembourg in priority.

More generally, the rising complexity and imbalances of the trade network, where some countries record large surpluses (China, Germany) and others large deficits (US, France) awake the debate on the need of a global coordinated adjustment plan involving all countries (see [19] and [20] for two recent network-related contributions on the global trade imbalances). By shrinking the size of the trade information matrix, the indirect measure can help each country to identify the trade partners with which negotiating prioritarily an adjustment plan to correct the imbalances. Fig. 6 refers to Germany and shows that trade deficits of many European countries toward Germany are netted out by network effect. Since France, Spain and UK have an ultimate deficit towards Germany, they are the priority countries with which the adjustment plan should be discussed.

Finally, the fact that Figs. 3, 4, 5 and 6 exhibit quite regular, non-noisy trends further validates the method (see Figure 12 to 35 for visualisations of all countries).

Trade integration with commute-time distance

One objective of the Euro zone was to support the trade integration of its members. The trade integration (through lower transaction costs) is one of the main benefits derived from the common currency. We here illustrate how the network tools provided by the commute-time distance approach help to deepen the understanding of the European trade network, the degree of integration of the countries in the network and their integration dynamics.

These distances, built upon the information available in the whole European network, are global, or indirect, measures of the country trade integration, as opposed to the direct trade integration computed as bilateral trade-to-GDP ratio.

We first present in Fig. 7 the variance of the distances of the Euro zone countries to their centre of mass over the period 1993–2007 on the one hand and of the 24 European countries of our sample on the other. The variance is computed as the sum of square distances to the centre of mass of the considered countries, each weighted proportionally to their PageRank. The variance allows to estimate with just one number how far away from each other the economies of the considered countries are. The larger the variance, the lower the mutual integration between the considered countries. The PageRank weighting is meant to tone down the effect of small-size outliers such as Bulgaria in early nineties, and give more importance to large economies such as France or Germany. It can be verified that the centres of mass of the Euro zone and the whole European Union are very close, and rather close to Germany.

In the same figure, we also represent individual trajectories through their square distance to the centre of mass of the

European Union, in order to show the variety of situations aggregated into the variance. For example, the United Kingdom, albeit outside the Euro zone, is actually better integrated to Euro zone than some Euro zone countries such as Spain. Nevertheless from the years 2000 it tends to split away from the centre of mass. Interestingly, this tendency is also observed for some Euro zone countries as we observe in another visualization hereafter. Fig. 8 further illustrates the diversity of situations, focusing on the small European economies lying far away from the centre of mass. We can see that the Eastern Europe economies, while starting very far away from the centre in 1993, steadily close the gap, while for instance Greece remains at constant distance and even drifts away for a few years. From a methodological perspective, we also see that each curve exhibits clear and consistent trends, showing that the tool delivers non-noisy results.

The comparison reveals that the average inter-country trade distances, as measured by their variance, is much smaller for Euro zone countries than for European countries (in or out of the Euro zone), revealing a larger integration among Euro countries. We also note that the variance decreases, mostly at the beginning of the period, with no specific break in 1999 for the introduction of the Euro. Some preliminary studies estimated the effect of the launch of the Euro on the volume of trade within the Euro zone countries to be in the range of 8% to 16% (much less than the 200% effect detected by Andrew Rose in his seminal paper on the currency unions [21–23]). That the graphic of the variances does not capture any substantial effect related to the Euro in 1999 is only half a surprise to the extent that most of the integration is known to have occurred before, especially with the Single Market Program of 1992. In addition, the absence of effect in our integration measure could also reveal some centrifugal forces for countries whose trade mostly occurs with countries at the periphery of the Euro zone. This is confirmed below in the country specific analysis.

The commute-time distances of the 24 countries considered can be represented exactly in a 24-dimensional embedding of the national economies. Given the difficulty of a 24-dimensional visualization, we project this representation in a two-dimensional space by principal component analysis. These pictorial representations of European economies in Figs. 9 to 11, reveal that some Euro zone countries started in about 2000 to take distance from the core of the network. This evolution was not necessarily captured by direct trade integration measures such as trade-to-GDP ratio. This is mostly due to countries like Finland, Greece and, to a lesser extent, Portugal. As regards Finland, the increasing distance to the core is mainly due to two factors. First, the share of the trade with the European countries decreased particularly over the period 2002–2007, as captured by the trade-to-GDP ratio. Second, the share of exports to large European countries such as Germany or France also decreased, which is not captured by the trade-to-GDP ratio. The combination of those factors explain the relative divergence of Finland. On the contrary, for Greece, the divergence in the trade network integration two-dimensional representation is not due to a decreasing share of trade with the European Union, but to a large decrease of trade with core countries (such as Germany). As regards Portugal, the share of trade with the European countries remains globally stable over the 1993–2007 period, but an acuter integration with Spain, raised the relative share of this peripheral countries and reduced the share of other more central countries.

Conclusion

As suggested by Fracasso and Schiavo [19] in their network analysis of global imbalances and by Schweitzer et al. [1] in their

review of economic network challenges, measuring economic variables and accounting for the network complexity requires new tools and new approaches. The Flow Decomposition Method, as a network counterpart for the trade deficit-to-GDP ratio, and the Commute Time Distance method as a network counterpart for the trade-to-GDP ratio, are shown to shed more light on the evolution of EU economies before and after the introduction of a common currency.

The launch of the Euro and the recent threats to its perennity surely stress the importance of better apprehending the European trade structure. The trade integration indirect measure helps to better identify those countries sliding out of the trade union. The trade imbalances indirect measure helps to better apprehend who are the ultimate debtors and creditors in the trade network.

The techniques used here are of course of interest for general networks, and while the Commute Time Distance methods and related graphical representation are standard tools reinterpreted here through their economic meaning, the Flow Decomposition Method introduced in this paper can help to analyse any kind of flows on graphs, e.g. car traffic on a road network.

Supporting Information

Figure S1 Evolution of the direct and indirect measures of trade imbalances for Austria. The figures in each cell correspond to direct trade surpluses (+) or deficits (−) of Austria toward countries listed on the rows. The colors correspond to the indirect measures of trade imbalances, as computed by the Flow Decomposition Method, with ultimate surpluses in green and ultimate deficits in red. (TIFF)

Figure S2 Evolution of the direct and indirect measures of trade imbalances for Belgium and Luxembourg. The figures in each cell correspond to direct trade surpluses (+) or deficits (−) of Belgium and Luxembourg toward countries listed on the rows. The colors correspond to the indirect measures of trade imbalances, as computed by the Flow Decomposition Method, with ultimate surpluses in green and ultimate deficits in red. (TIFF)

Figure S3 Evolution of the direct and indirect measures of trade imbalances for Bulgaria. The figures in each cell correspond to direct trade surpluses (+) or deficits (−) of Bulgaria toward countries listed on the rows. The colors correspond to the indirect measures of trade imbalances, as computed by the Flow Decomposition Method, with ultimate surpluses in green and ultimate deficits in red. (TIFF)

Figure S4 Evolution of the direct and indirect measures of trade imbalances for Czech Republic. The figures in each cell correspond to direct trade surpluses (+) or deficits (−) of Czech Republic toward countries listed on the rows. The colors correspond to the indirect measures of trade imbalances, as computed by the Flow Decomposition Method, with ultimate surpluses in green and ultimate deficits in red. (TIFF)

Figure S5 Evolution of the direct and indirect measures of trade imbalances for Denmark. The figures in each cell correspond to direct trade surpluses (+) or deficits (−) of Denmark toward countries listed on the rows. The colors correspond to the indirect measures of trade imbalances, as computed by the Flow Decomposition Method, with ultimate surpluses in green and ultimate deficits in red. (TIFF)

Figure S21 Evolution of the direct and indirect measures of trade imbalances for Slovakia. The figures in each cell correspond to direct trade surpluses (+) or deficits (−) of Slovakia toward countries listed on the rows. The colors correspond to the indirect measures of trade imbalances, as computed by the Flow Decomposition Method, with ultimate surpluses in green and ultimate deficits in red. (TIFF)

Figure S22 Evolution of the direct and indirect measures of trade imbalances for Slovenia. The figures in each cell correspond to direct trade surpluses (+) or deficits (−) of Slovenia toward countries listed on the rows. The colors correspond to the indirect measures of trade imbalances, as computed by the Flow Decomposition Method, with ultimate surpluses in green and ultimate deficits in red. (TIFF)

Figure S23 Evolution of the direct and indirect measures of trade imbalances for Sweden. The figures in each cell correspond to direct trade surpluses (+) or deficits (−) of Sweden toward countries listed on the rows. The colors correspond to the indirect measures of trade imbalances, as

computed by the Flow Decomposition Method, with ultimate surpluses in green and ultimate deficits in red. (TIFF)

Figure S24 Evolution of the direct and indirect measures of trade imbalances for UK. The figures in each cell correspond to direct trade surpluses (+) or deficits (−) of UK toward countries listed on the rows. The colors correspond to the indirect measures of trade imbalances, as computed by the Flow Decomposition Method, with ultimate surpluses in green and ultimate deficits in red. (TIFF)

Acknowledgments

Conversations with Florian Mayneris and comments from the anonymous reviewers helped improve the paper thoroughly.

Author Contributions

Conceived and designed the experiments: GMK JFC JCD. Performed the experiments: GMK JCD. Analyzed the data: GMK JFC JCD. Contributed reagents/materials/analysis tools: GMK JFC JCD. Wrote the paper: GMK JFC JCD.

References

- Schweitzer F, Fagiolo G, Sornette D, Vega-Redondo F, Vespignani A, et al. (2009) Economic networks: The new challenges. *Science* 325: 422.
- Soramäki K, Bech M, Arnold J, Glass R, Beyeler W (2007) The topology of interbank payment flows. *Physica A: Statistical Mechanics and its Applications* 379: 317–333.
- Hidalgo C, Hausmann R (2009) The building blocks of economic complexity. *Proceedings of the National Academy of Sciences* 106: 10570–10575.
- Bhattacharya K, Mukherjee G, Saramäki J, Kaski K, Manna S (2008) The international trade network: weighted network analysis and modelling. *Journal of Statistical Mechanics: Theory and Experiment* 2008: P02002.
- Fagiolo G, Reyes J, Schiavo S (2009) World-trade web: Topological properties, dynamics, and evolution. *Physical Review E* 79: 036115.
- Fagiolo G, Reyes J, Schiavo S (2010) The evolution of the world trade web: a weighted-network analysis. *Journal of Evolutionary Economics* 20: 479–514.
- Garlaschelli D, Loffredo M (2005) Structure and evolution of the world trade network. *Physica A: Statistical Mechanics and its Applications* 355: 138–144.
- He J, Deem M (2010) Structure and response in the world trade network. *Physical review letters* 105: 198701.
- Fagiolo G (2007) Clustering in complex directed networks. *Physical Review E* 76: 026107.
- Brin S, Page L (1998) The anatomy of a large-scale hypertextual web search engine. *Computer networks and ISDN systems* 30: 107–117.
- Reyes J, Schiavo S, Fagiolo G (2008) Assessing the evolution of international economic integration using random walk betweenness centrality: The cases of east asia and latin america. *Advances in Complex Systems* 11: 685–702.
- Hirschman A (1964) The paternity of an index. *The American Economic Review* 54: 761–762.
- Simpson E (1949) Measurement of diversity. *Nature* 163: 688–688.
- Rnyi A (1961) On measures of entropy and information. In: *Fourth Berkeley Symposium on Mathematical Statistics and Probability*, pp. 547–561.
- Grinstead C, Snell J (2006) *Introduction to probability*. American Mathematical Society.
- Boley D, Ranjan G, Zhang Z (2011) Commute times for a directed graph using an asymmetric laplacian. *Linear Algebra and its Applications* 435: 224–242.
- Hall K (1970) An r-dimensional quadratic placement algorithm. *Management Science* 17: 219–229.
- Koren Y (2005) Drawing graphs by eigenvectors: Theory and practice. *Computers & Mathematics with Applications* 49: 1867–1888.
- Fracasso A, Schiavo S (2009) Global imbalances, exchange rates adjustment and the crisis: Implications from network analysis. *Journal of Policy Modeling* 31: 601–619.
- Duenas M, Fagiolo G (2013) Global trade imbalances: A network approach. *LEM Papers Series* 2013/12, Laboratory of Economics and Management (LEM), Sant'Anna School of Advanced Studies, Pisa, Italy. Available: <http://ideas.repec.org/p/ssa/lemwps/2013-12.html>.
- Baldwin RE (2006) The euro's trade effect. Working Paper Series 594, European Central Bank. URL <http://ideas.repec.org/p/ecb/ecbwps/20060594.html>.
- Engel C, Rogers J (2004) Euro's price dispersion. *Economic Policy* July: 347–384.
- Rose A (2000) One money, one market: the effect of common currencies on trade. *Economic policy* 15: 7–46.