

A Nitsche's method method for mixed dimensional analysis: conforming and non-conforming solid-structure coupling

Vinh Phu Nguyen^{c,1}, Pierre Kerfriden^{c,2}, Susanne Claus^{d,3}, Stéphane P.A. Bordas^{c,4,*}

^a*School of Engineering, Institute of Mechanics and Advanced Materials, Cardiff University, Queen's Buildings, The Parade, Cardiff CF24 3AA*

^b*School of Engineering, Institute of Mechanics and Advanced Materials, Cardiff University*

Contents

| | | |
|----------|--|-----------|
| 1 | Introduction | 3 |
| 2 | Problem description | 5 |
| 2.1 | Solid-beam coupling | 6 |
| 2.2 | Solid-plate coupling | 7 |
| 3 | Weak forms | 9 |
| 3.1 | Solid-beam coupling | 9 |
| 3.2 | Solid-plate coupling | 10 |
| 4 | Discretisation | 10 |
| 4.1 | Basis functions | 10 |
| 4.1.1 | B-splines basis functions and solids | 10 |
| 4.1.2 | Isogeometric analysis | 11 |
| 4.2 | Solid-beam coupling | 13 |
| 4.2.1 | Discretisation of the solid | 13 |
| 4.2.2 | Discretisation of the beam | 14 |
| 4.2.3 | Coupling matrices | 14 |
| 4.2.4 | Implementation of coupling matrices | 15 |
| 4.3 | Stabilisation parameter | 16 |
| 4.4 | Solid-plate coupling | 18 |
| 4.4.1 | Discretisation of the plate | 18 |
| 4.4.2 | Coupling matrices | 18 |
| 4.4.3 | Implementation of coupling matrices | 19 |
| 4.5 | Shear deformation models | 21 |

*Corresponding author

¹nguyenpv@cardiff.ac.uk, ORCID: 0000-0003-1212-8311

²pierre@cardiff.ac.uk

³pierre@cardiff.ac.uk

⁴stephane.bordas@alum.northwestern.edu, ORCID: 0000-0001-7622-2193

| | | |
|----------|---|-----------|
| 4.5.1 | Timoshenko beam | 21 |
| 4.5.2 | Plane frame analysis | 22 |
| 4.5.3 | Mindlin-Reissner plate | 22 |
| 5 | Non-conforming coupling | 24 |
| 6 | Numerical examples | 25 |
| 6.1 | Continuum-beam coupling | 26 |
| 6.1.1 | Timoshenko beam: conforming coupling | 26 |
| 6.1.2 | Timoshenko beam: non-conforming coupling | 27 |
| 6.1.3 | Frame analysis | 27 |
| 6.2 | Continuum-plate coupling | 29 |
| 6.2.1 | Cantilever plate: conforming coupling | 29 |
| 6.2.2 | Cantilever plate: non-conforming coupling | 29 |
| 6.2.3 | Non-conforming coupling of a square plate | 29 |
| 7 | Conclusions | 33 |

A Nitsche's method method for mixed dimensional analysis: conforming and non-conforming solid-structure coupling

Vinh Phu Nguyen^{c,1}, Pierre Kerfriden^{c,2}, Susanne Claus^{d,3}, Stéphane P.A. Bordas^{c,4,*}

^c*School of Engineering, Institute of Mechanics and Advanced Materials, Cardiff University, Queen's Buildings, The Parade, Cardiff CF24 3AA*

^d*School of Engineering, Institute of Mechanics and Advanced Materials, Cardiff University*

Abstract

A Nitsche's method is presented to couple different mechanical models. They include coupling of a solid and a beam and of a solid and a plate. Both conforming and non-conforming formulations are presented. In a non-conforming formulation, the structure domain is overlapped by a refined solid model. Applications can be found in multi-dimensional analyses in which parts of a structure are modeled with solid elements and others are modeled using a coarser model with beam and/or plate elements. Discretisations are performed using both standard Lagrange elements and high order NURBS (Non Uniform Rational Bsplines) based isogeometric elements. We present various examples to demonstrate the performance of the method.

Keywords: Nitsche, mixed dimensional analysis (MDA), isogeometric analysis (IGA), NURBS

1. Introduction

Nitsche's method [1] was originally proposed to weakly enforce Dirichlet boundary conditions as an alternative to equivalent pointwise constraints. The idea behind a Nitsche based approach is to replace the Lagrange multipliers arising in a dual formulation through their physical representation, namely the normal flux at the interface. Nitsche also added an extra penalty like term to restore the coercivity of the bilinear form. The method can be seen to lie in between the Lagrange multiplier method and the penalty method. The method has seen a resurgence in recent years and was applied for interface problems [2, 3], for connecting overlapping meshes [4, 5, 6, 7], for imposing Dirichlet boundary conditions in meshfree methods [8], in immersed boundary methods [9, 10, 11], in fluid mechanics [12] and for contact mechanics [13]. It has also been applied for stabilising constraints in enriched finite elements [14].

In this paper, a Nitsche's method is presented to (1) couple two dimensional (2D) continua and beams and (3) three dimensional (3D) continua and plates. The continua and the structures are discretised using either Lagrange elements or high order isogeometric elements. The need for the research presented in this paper stems from the problem of progressive failure analysis of composite laminates of which recent studies were carried out by the authors [15, 16, 17]. It was shown that using NURBS (Non Uniform Rational B-splines) as the finite element basis functions—the concept coined as isogeometric analysis (IGA) by Hughes and his co-workers [18, 19] results in speed up in both pre-processing

*Corresponding author

¹nguyenpv@cardiff.ac.uk, ORCID: 0000-0003-1212-8311

²pierre@cardiff.ac.uk

³pierre@cardiff.ac.uk

⁴stephane.bordas@alum.northwestern.edu, ORCID: 0000-0001-7622-2193

and processing step of delamination analysis of composite laminates. However in order for IGA to be applied for real problems such as large composite panels utilized in aerospace industry Mixed Dimensional Analysis (MDA) [20] must be employed. In MDA some portions of the object of interest can be modeled using reduced-dimensional elements (typically beams and shells), while other portions must be modelled using volume (solid) elements. In this way, large structures are likely tractable. The question is how to model the coupling of different models in a flexible and efficient manner.

Broadly speaking the coupling can be either surface coupling (non-overlapping coupling) or volume coupling (overlapping coupling) [21]. Volume coupling indicates the existence of a region in which both model co-exist and is usually realized using the Arlequin method [22] of which Abaqus implementation can be found in [23]. Arlequin method is best suited for coupling different physical models such as continuum-particle modeling see Refs. [24, 25, 26, 27] among others. In Arlequin method care must be taken when choosing the space of Lagrange multipliers and the numerical integration of coupling terms on unstructured meshes is a non-trivial task, particularly for three dimensional problems. In surface coupling there is no overlapping of models and the two models can be coupled using Lagrange multipliers as in the mortar method [28], or the penalty method. Both Lagrange multiplier method and the penalty method have their own disadvantages—in the former it is the introduction of extra unknowns (thus destroys positive definiteness of the augmented system of equation) and the proper choice of the Lagrange multiplier discrete space. In the latter it is the choice of the penalty parameter. Other method is to use constraint equations [29, 30] (the common multipoint constraint MPC method in commercial FE packages). MPC based coupling is a strong coupling method whereas all other coupling methods are weak couplings. In [30] constraint equations are determined by equating the work done by the stresses in each part of the model at the interface between dimensions. The authors also provided error estimations for their MDA. The theory of MPC method is described in details in [31]. In [29] a comparative study of three coupling methods: MPC, mortar method and Arlequin method was presented for the concurrent multiscale modeling of concrete material where the macro domain is discretised by a coarse mesh and the micro domain (with heterogeneities) is discretised by a very fine mesh. The authors concluded that the Arlequin method is too expensive to consider. A somehow related approach is the global-local technique, see e.g., [32] and references therein. In a global-local approach, the whole system is first analyzed as a global entity, discarding details deemed not to affect its overall behavior. Local details (cutoffs, cracks etc.) are then analyzed using the results of the global analysis as boundary conditions. In [33] a global-local technique was adopted as a non-intrusive coupling method. The authors in [34] compared the performance, through a simple numerical example, of the MPC method, the Arlequin method and the global-local method and the conclusion was that the Arlequin method is a promising coupling method for it results in lower stress jumps at the coupling boundary. In aforementioned coupling methods either a modified weak formulation has to be used or a system of linear equations has to be solved with a set of (linear) constraints (for the MPC method). Transition elements are a yet another method in which standard weak forms can be reused to couple solid elements and beam/shell elements see e.g., [35, 36] or in an IGA context the bending strip method [37, 38]. A mesh-geometry-based solution to mixed-dimensional coupling was presented in [20]. It should be emphasized that solving mixed dimensional models is much faster than solving full 3D models, but the time required to process these mixed dimensional models might eliminate that advantage.

In this paper, we decided to use a surface coupling method and a Nitsche based weak coupling formulation. Surface coupling was chosen because we are not solving a multi-physics model and the Nitsche's method is adopted due to a rich mathematics behind it and the related discontinuous Galerkin methods [39]. The method is symmetric for symmetric problems and do not need additional degrees of freedom. However, a user-defined stabilization parameter is required. Our target is modeling large scale composite laminates and the long-term goal is to start the analysis from a laminate shell model, build goal-oriented error estimates to identify the *hot-spots* where intra or inter-laminar failure is likely to take place, to refine these zones with a continuum description, and, once the delaminations and intra-laminar cracks are fully open, replace them by an homogenised shell model.

The contribution of the paper are listed as follows

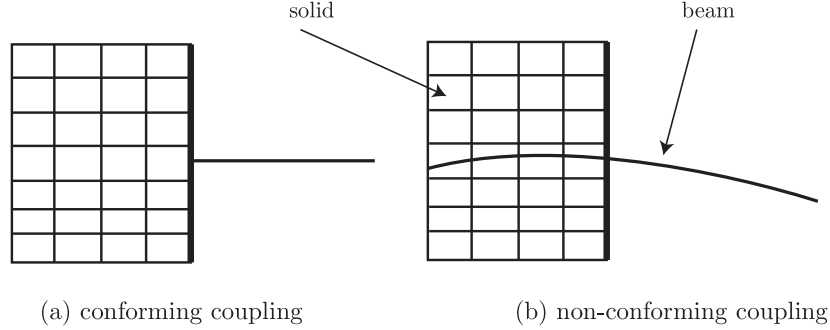


Figure 1: Solid-structure coupling: (a) conforming coupling and (b) non-conforming coupling. The bold lines represent the coupling line/surface.

1. Formulation and implementation details for 2D solid and beam coupling;
2. Formulation and implementation details for 3D solid and plate coupling;
3. Conforming and non-conforming coupling are presented, cf. Fig. 1;
4. Study of both symmetric Nitsche's method and non symmetric Nitsche's method.

The remainder of the paper is organised as follows. Section 2 presents the problem description followed by variational formulations given in Section 3. Discretisation is discussed in Section 4. Non-conforming coupling is detailed in Section 5 and numerical examples are provided in Section 6. The presented algorithm applies for both Lagrange basis functions and NURBS basis functions. The latter have been extensively used in isogeometric analysis (IGA) [18, 19] and facilitates the implementation of rotation-free beam/plate/shell elements see e.g., [40, 41] which is also adopted in this work. Additionally, IGA is also the numerical framework for our recent works on failure analysis of composite laminates [15, 16, 17]. Coupling formulation for both classical beam/plate model and first order shear beam/plate model are presented. We confine to quasi-static small strain problems although Nitsche's method was successfully applied to finite deformation [6].

We denote d_p and d_s as the number of parametric directions and spatial directions respectively. Both tensor and matrix notations are used. In tensor notation, tensors of order one or greater are written in boldface. Lower case bold-face letters are used for first-order tensor whereas upper case bold-face letters indicate high-order tensors. The major exception to this rule are the physical second order stress tensor and the strain tensor which are written in lower case. In matrix notation, the same symbols as for tensors are used to denote the matrices but the connective operator symbols are skipped.

2. Problem description

In this section the governing equations of two mechanical systems are presented namely (1) solid-beam and (2) solid-plate system. For sake of presentation, we use the classical Euler-Bernoulli beam theory and Kirchhoff plate theory. The extension to Timoshenko beam and Mindlin-Reissner plate is provided in Section 4.5. For subsequent development, superscripts s , b and p will be adopted to denote quantities associated with the solid, beam and plate, respectively.

2.1. Solid-beam coupling

We define the domain $\Omega \subset \mathbb{R}^{d_s}$ which is divided into two non-overlapping domains— Ω^s for the solid part and Ω^b for the beam part, cf. Fig. 2. The boundary of Ω^s is partitioned as $\Gamma^s = \overline{\Gamma_u^s} \cup \overline{\Gamma_t^s}$, $\Gamma_u^s \cap \Gamma_t^s = \emptyset$ where Γ_u^s and Γ_t^s denote the Dirichlet and Neumann boundaries respectively with an overline representing a closed set. Let \mathbf{u}^s , $\boldsymbol{\epsilon}^s$ and $\boldsymbol{\sigma}^s$ be the displacements, strains and stresses in the solid part, respectively. In the beam part, w denotes the transverse displacement. The global coordinate system is denoted by (x, y) and a local coordinate system (\bar{x}, \bar{y}) is adopted for the beam. Note that Ω_b is the mid-line of the beam Ω_{ext}^b . The coupling interface Γ^* is defined as $\Gamma^* = \Omega^s \cap \Omega_{ext}^b$.

The governing equations are

- For the solid part

$$-\nabla \cdot \boldsymbol{\sigma}^s = \mathbf{b} \quad \text{on} \quad \Omega^s \quad (1a)$$

$$\mathbf{u}^s = \bar{\mathbf{u}} \quad \text{on} \quad \Gamma_u^s \quad (1b)$$

$$\boldsymbol{\sigma}^s \cdot \mathbf{n} = \bar{\mathbf{t}} \quad \text{on} \quad \Gamma_t^s \quad (1c)$$

where the strain is taken as the symmetric part of the displacement gradient $\boldsymbol{\epsilon}^s = \frac{1}{2}(\nabla \mathbf{u}^s + \nabla^T \mathbf{u}^s)$. And the Cauchy stress is a linear function of the strains $\boldsymbol{\sigma}^s = \mathbf{C}^s : \boldsymbol{\epsilon}^s$ where \mathbf{C}^s denotes the fourth order tensor of material properties of the solid according to Hooke's law. Prescribed displacements and tractions are denoted by $\bar{\mathbf{u}}$ and $\bar{\mathbf{t}}$, respectively.

- For the beam part

$$EI \frac{d^4 w}{d\bar{x}^4} = p \quad \text{on} \quad \Omega^b \quad (2a)$$

$$w = \bar{w} \quad \text{on} \quad \Gamma_u^b \quad (2b)$$

$$\frac{dw}{d\bar{x}} = -\bar{\theta} \quad \text{on} \quad \Gamma_\theta^b \quad (2c)$$

$$EI \frac{d^2 w}{d\bar{x}^2} n = \bar{m} \quad \text{on} \quad \Gamma_m^b \quad (2d)$$

where I is the moment of inertia of the beam which is, for a rectangular beam, given by $I = \frac{bh^3}{12}$ with h being the beam thickness and b denotes the beam width; E is the Young's modulus and p denotes the distributed pressure load. \bar{w} , $\bar{\theta}$ and \bar{m} are the prescribed deflection, rotation and moment, respectively.

- For the coupling part

$$\mathbf{u}^s = \mathbf{u}^b \quad \text{on} \quad \Gamma^* \quad (3a)$$

$$\boldsymbol{\sigma}^s \cdot \mathbf{n}^s = \boldsymbol{\sigma}^b \cdot \mathbf{n}^s \quad \text{on} \quad \Gamma^* \quad (3b)$$

where \mathbf{n}^s is the outward unit normal vector to the coupling interface Γ^* ; \mathbf{u}^b denote the beam displacement field, in the global coordinate system, of a point on the coupling interface Γ^* which is defined as

$$\mathbf{u}^b = \mathbf{R}_v^T \bar{\mathbf{u}}^b, \quad \bar{\mathbf{u}}^b = [-\bar{y}w_{,\bar{x}} \quad w(\bar{x})]^T \quad (4)$$

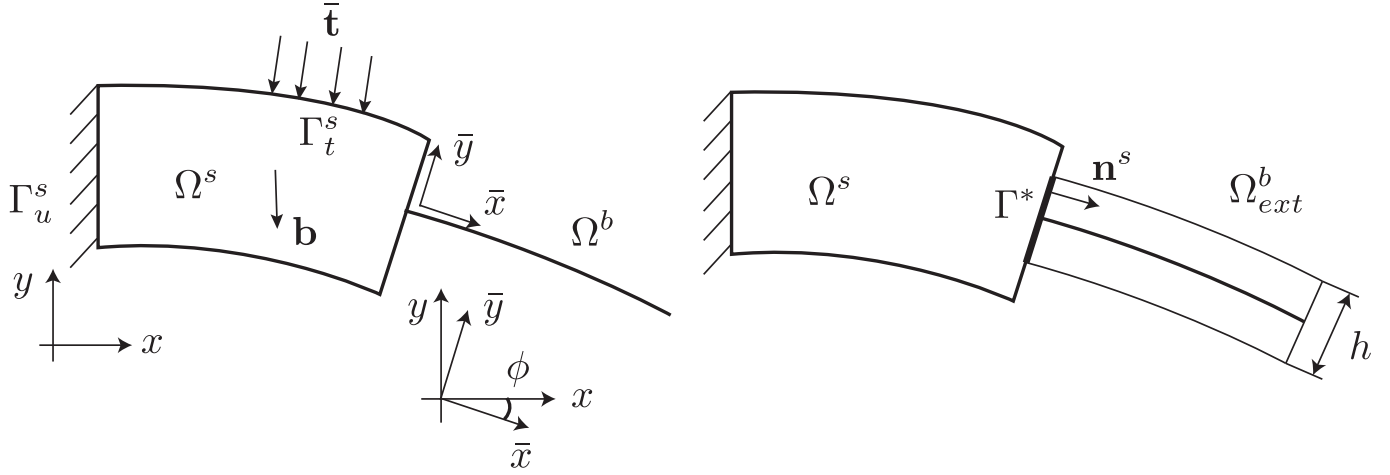


Figure 2: Coupling of a two dimensional solid and a beam.

and $\boldsymbol{\sigma}^b$ is the beam stress field defined in the global system which is given by

$$\boldsymbol{\sigma}^b = \mathbf{T}^{-1} \bar{\boldsymbol{\sigma}}^b \quad (5)$$

where \mathbf{R}_v and \mathbf{T}^{-1} denote the rotation matrices for vector transformation and stress transformation, respectively

$$\mathbf{R}_v = \begin{bmatrix} \cos \phi & \sin \phi \\ -\sin \phi & \cos \phi \end{bmatrix}, \quad \mathbf{T}^{-1} = \begin{bmatrix} \cos^2 \phi & \sin^2 \phi & -2 \sin \phi \cos \phi \\ \sin^2 \phi & \cos^2 \phi & 2 \sin \phi \cos \phi \\ \sin \phi \cos \phi & -\sin \phi \cos \phi & \cos^2 \phi - \sin^2 \phi \end{bmatrix} \quad (6)$$

The beam stresses are defined as

$$\bar{\boldsymbol{\sigma}}^b \equiv \begin{bmatrix} \bar{\sigma}_{xx}^b \\ \bar{\sigma}_{yy}^b \\ \bar{\sigma}_{xy}^b \end{bmatrix} = \underbrace{\begin{bmatrix} E & 0 & 0 \\ 0 & 0 & 0 \\ 0 & 0 & 0 \end{bmatrix}}_{\mathbf{C}^b} \begin{bmatrix} \bar{\epsilon}_{xx}^b \\ \bar{\epsilon}_{yy}^b \\ 2\bar{\epsilon}_{xy}^b \end{bmatrix} \quad (7)$$

where the only non-zero strain component is $\bar{\epsilon}_{xx} = -\bar{y}w_{,\bar{x}\bar{x}}$.

2.2. Solid-plate coupling

The coupling of a solid and a plate is graphically illustrated by Fig. 3. The coupling interface Γ^* is the intersection of the solid domain and the three dimensional plate. The mid-surface of the plate is denoted by Ω^p .

The governing equations for a solid-plate system are as follows

- For the solid part, cf. Equation (1).

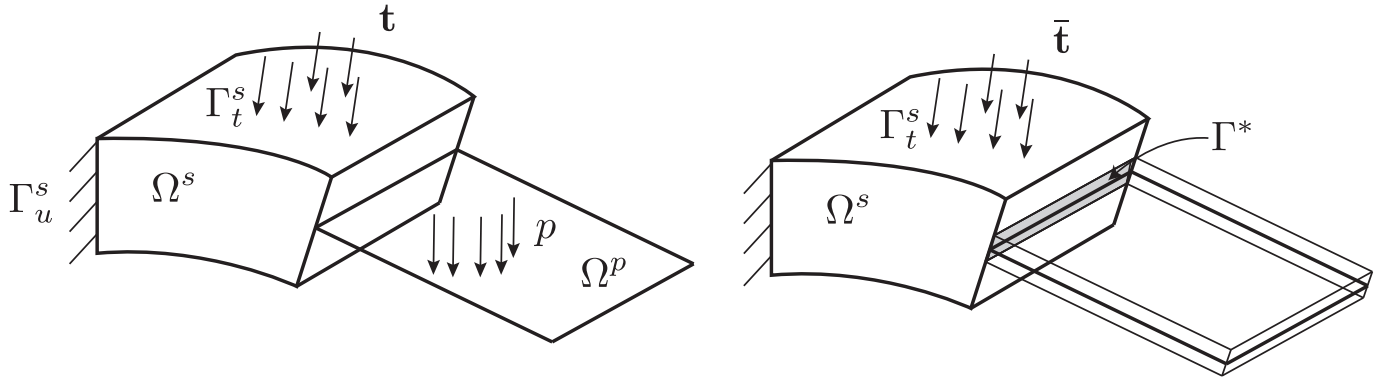


Figure 3: Coupling of a three dimensional solid and a plate.

- For the plate part

$$\frac{\partial^4 w}{\partial x^4} + 2\frac{\partial^4 w}{\partial x^2 \partial y^2} + \frac{\partial^4 w}{\partial y^4} = \frac{p}{D} \quad \text{on } \Omega^p \quad (8a)$$

$$w = \bar{w} \quad \text{on } \Gamma_u^p \quad (8b)$$

$$\frac{\partial w}{\partial n} = \bar{\theta} \quad \text{on } \Gamma_\theta^p \quad (8c)$$

where $w(x, y)$ denotes the transverse displacement field of the plate; D is the plate rigidity which is given by $D = \frac{Eh^3}{12(1-\nu^2)}$ with h being the plate thickness and E, ν denote the Young's modulus and Poisson's ratio, respectively. p denotes the distributed pressure load; n denotes the normal of the boundary Γ_θ^p . The prescribed transverse displacement and rotations are represented by \bar{w} and $\bar{\theta}$, respectively. Note that for simplicity we have omitted force/moment boundary conditions since the classical plate theory we are using is standard, we refer to [42, 43] for details.

- For the coupling part

$$\mathbf{u}^s = \mathbf{u}^p \quad \text{on } \Gamma^* \quad (9a)$$

$$\boldsymbol{\sigma}^s \cdot \mathbf{n}^s = \boldsymbol{\sigma}^p \cdot \mathbf{n}^s \quad \text{on } \Gamma^* \quad (9b)$$

where \mathbf{n}^s is the outward unit normal vector to the coupling interface Γ^* .

$$\mathbf{u}^p = \begin{bmatrix} -x_3 w_{,1} \\ -x_3 w_{,2} \\ w(x_1, x_2) \end{bmatrix} \quad (10)$$

The strain field is then given by

$$\begin{aligned}\epsilon_{11} &= -x_3 \frac{\partial^2 w}{\partial x_1^2} = -x_3 w_{,11} \\ \epsilon_{22} &= -x_3 \frac{\partial^2 w}{\partial x_2^2} = -x_3 w_{,22} \\ 2\epsilon_{12} &= -2x_3 \frac{\partial^2 w}{\partial x_1 \partial x_2} = -2x_3 w_{,12}\end{aligned}\tag{11}$$

$$\boldsymbol{\sigma}^p \equiv \begin{bmatrix} \sigma_{11} \\ \sigma_{22} \\ \sigma_{12} \end{bmatrix} = \frac{E}{(1-\nu^2)} \begin{bmatrix} 1 & \nu & 0 \\ \nu & 1 & 0 \\ 0 & 0 & 0.5(1-\nu) \end{bmatrix} \begin{bmatrix} \epsilon_{11} \\ \epsilon_{22} \\ 2\epsilon_{12} \end{bmatrix} \equiv \mathbf{C}^p \boldsymbol{\epsilon}^p \tag{12}$$

3. Weak forms

In our method, interfacial conditions, Equations (3) and (9), are enforced weakly with Nitsches method [1].

3.1. Solid-beam coupling

We start by defining the spaces, \mathbf{S}^s and \mathbf{V}^s over the solid domain that will contain the solution and trial functions respectively:

$$\begin{aligned}\mathbf{S}^s &= \{\mathbf{u}^s(\mathbf{x}) | \mathbf{u}^s(\mathbf{x}) \in \mathbf{H}^1(\Omega^s), \mathbf{u}^s = \bar{\mathbf{u}} \text{ on } \Gamma_u^s\} \\ \mathbf{V}^s &= \{\mathbf{w}^s(\mathbf{x}) | \mathbf{w}^s(\mathbf{x}) \in \mathbf{H}^1(\Omega^s), \mathbf{w}^s = \mathbf{0} \text{ on } \Gamma_u^s\}\end{aligned}\tag{13}$$

In the same manner, we define the spaces, \mathbf{S}^b and \mathbf{V}^b over the beam domain that will contain the solution and trial functions

$$\begin{aligned}\mathbf{S}^b &= \{u^b(\mathbf{x}) | u^b(\mathbf{x}) \in H^2(\Omega^b), u^b = \bar{u} \text{ on } \Gamma_u^b \text{ and } \frac{du^b}{dx} = \bar{\theta} \text{ on } \Gamma_\theta^b\} \\ \mathbf{V}^b &= \{w^b(\mathbf{x}) | w^b(\mathbf{x}) \in H^2(\Omega^b), w^b = 0 \text{ on } \Gamma_u^b \text{ and } \frac{dw^b}{dx} = 0 \text{ on } \Gamma_\theta^b\}\end{aligned}\tag{14}$$

The standard application of Nitsche's method for the coupling is: Find $(\mathbf{u}^s, u^b) \in \mathbf{S}^s \times \mathbf{S}^b$ such that

$$\begin{aligned}\int_{\Omega^s} \boldsymbol{\epsilon}(\mathbf{w}^s) : \boldsymbol{\sigma}^s d\Omega + \int_{\Omega^b} EI w_{,xx} u_{,xx} d\Omega - \int_{\Gamma^*} ([\mathbf{w}] \otimes \mathbf{n}^s) : \{\boldsymbol{\sigma}\} d\Gamma - \int_{\Gamma^*} ([\mathbf{u}] \otimes \mathbf{n}^s) : \{\boldsymbol{\sigma}(\mathbf{w})\} d\Gamma \\ + \int_{\Gamma^*} \alpha [\mathbf{w}] \cdot [\mathbf{u}] d\Gamma = \int_{\Omega^s} \mathbf{w}^s \cdot \mathbf{b} d\Omega + \int_{\Gamma_t^s} \mathbf{w}^s \cdot \bar{\mathbf{t}} d\Gamma + \int_{\Omega^b} w^b p d\Omega + \left(\frac{dw}{dx} \bar{m} \right) \Big|_{\Gamma_m^b}\end{aligned}\tag{15}$$

for all $(\mathbf{w}^s, w^b) \in \mathbf{V}^s \times \mathbf{V}^b$.

In Equation (15), the jump and average operators $\llbracket \cdot \rrbracket$ and $\{\cdot\}$ are defined as

$$\llbracket \mathbf{u} \rrbracket = \mathbf{u}^s - \mathbf{u}^b, \quad \{\boldsymbol{\sigma}\} = \frac{1}{2}(\boldsymbol{\sigma}^s + \boldsymbol{\sigma}^b) \quad (16)$$

which are quantities evaluated only along the coupling interface Γ^* .

The last term in the left hand side of Equation (15) is the so-called stabilisation term that aims to stabilise the method. Therefore α is a penalty-like stabilisation term of which there exists a minimum that guarantees stability, see e.g., [44]. In Section 4.3, a numerical analysis is provided to determine this minimum.

3.2. Solid-plate coupling

The standard application of Nitsche's method for the coupling is: Find $(\mathbf{u}^s, u^b) \in \mathbf{S}^s \times \mathbf{S}^b$ such that

$$\begin{aligned} \int_{\Omega^s} \boldsymbol{\epsilon}(\mathbf{w}^s) : \boldsymbol{\sigma}^s d\Omega + \int_{\Omega^p} \boldsymbol{\epsilon}(w^p) : \boldsymbol{\sigma}^p d\Omega - \int_{\Gamma^*} (\llbracket \mathbf{w} \rrbracket \otimes \mathbf{n}^s) : \{\boldsymbol{\sigma}\} d\Gamma - \int_{\Gamma^*} (\llbracket \mathbf{u} \rrbracket \otimes \mathbf{n}^s) : \{\boldsymbol{\sigma}(\mathbf{w})\} d\Gamma \\ + \int_{\Gamma^*} \alpha \llbracket \mathbf{w} \rrbracket \cdot \llbracket \mathbf{u} \rrbracket d\Gamma = \int_{\Omega} \mathbf{w} \cdot \mathbf{b} d\Omega + \int_{\Gamma_t} \mathbf{w} \cdot \bar{\mathbf{t}} d\Gamma \end{aligned} \quad (17)$$

for all $(\mathbf{w}^s, w^b) \in \mathbf{V}^s \times \mathbf{V}^b$.

4. Discretisation

In principle any spatial discretisation methods can be adopted, NURBS-based isogeometric finite elements are, however, utilized in this work because (1) IGA facilitates the construction of rotation-free bending elements and (2) IGA is also the numerical framework for our recent works on failure analysis of composite laminates [15, 16, 17] to which the presented coupling formulation will be applied in a future work. For simplicity, only B-splines are presented, the formulation is, however, general and can be equally applied to NURBS.

4.1. Basis functions

We briefly present the essentials of B-splines in this section. More details can be found in the textbook [45].

4.1.1. B-splines basis functions and solids

Given a knot vector $\Xi = \{\xi_1, \xi_2, \dots, \xi_{n+p+1}\}$, $\xi_i \leq \xi_{i+1}$ where ξ_i is the i th knot, n is the number of basis functions and p is the polynomial order. the associated set of B-spline basis functions $\{N_{i,p}\}_{i=1}^n$ are defined recursively by the Cox-de-Boor formula, starting with the zeroth order basis function ($p = 0$)

$$N_{i,0}(\xi) = \begin{cases} 1 & \text{if } \xi_i \leq \xi < \xi_{i+1}, \\ 0 & \text{otherwise} \end{cases} \quad (18)$$

and for a polynomial order $p \geq 1$

$$N_{i,p}(\xi) = \frac{\xi - \xi_i}{\xi_{i+p} - \xi_i} N_{i,p-1}(\xi) + \frac{\xi_{i+p+1} - \xi}{\xi_{i+p+1} - \xi_{i+1}} N_{i+1,p-1}(\xi) \quad (19)$$

in which fractions of the form $0/0$ are defined as zero.

Fig. 4 illustrates a corresponding set of basis functions for an open, non-uniform knot vector. Of particular note is the interpolatory nature of the basis function at each end of the interval created through an open knot vector, and the reduced continuity at $\xi = 4$ due to the presence of the location of a repeated knot where C^0 continuity is attained. Elsewhere, the functions are C^1 continuous (C^{p-1}).

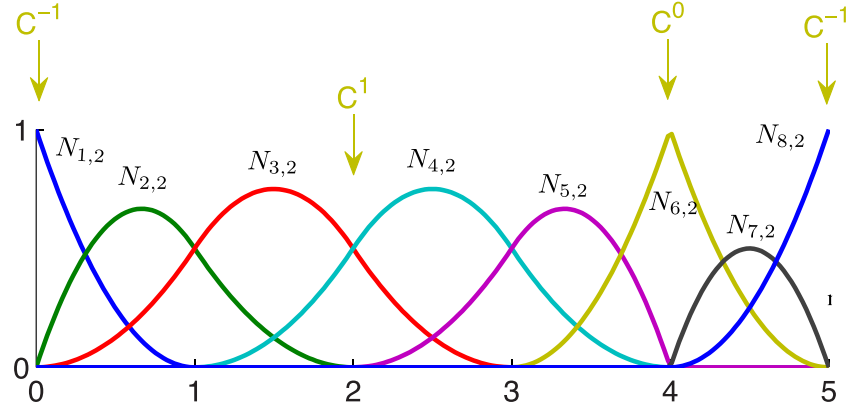


Figure 4: Quadratic B-spline basis functions defined for the open, non-uniform knot vector $\Xi = \{0, 0, 0, 1, 2, 3, 4, 4, 5, 5, 5\}$. Note the flexibility in the construction of basis functions with varying degrees of regularity.

Let $\Xi^1 = \{\xi_1, \xi_2, \dots, \xi_{n+p+1}\}$, $\Xi^2 = \{\eta_1, \eta_2, \dots, \eta_{m+q+1}\}$, and $\Xi^3 = \{\zeta_1, \zeta_2, \dots, \zeta_{l+r+1}\}$ are the knot vectors and a control net $\mathbf{P}_{i,j,k} \in \mathbb{R}^{d_s}$. A tensor-product B-spline solid is defined as

$$\mathbf{V}(\xi, \eta, \zeta) = \sum_{i=1}^n \sum_{j=1}^m \sum_{k=1}^l N_{i,p}(\xi) M_{j,q}(\eta) L_{k,r}(\zeta) \mathbf{P}_{i,j,k} \quad (20)$$

or, by defining a global index A through

$$A = (n \times m)(k - 1) + n(j - 1) + i \quad (21)$$

a simplified form of Equation (20) can be written as

$$\mathbf{V}(\xi) = \sum_{A=1}^{n \times m \times l} \mathbf{P}_A N_A^{p,q,r}(\xi) \quad (22)$$

4.1.2. Isogeometric analysis

Isogeometric analysis also makes use of an isoparametric formulation, but a key difference over its Lagrangian counterpart is the use of basis functions generated by CAD to discretise both the geometry and unknown fields. In IGA, regions bounded by knot lines with non-zero parametric area lead to a natural definition of element domains. The use of NURBS basis functions for discretisation introduces the concept of parametric space which is absent in

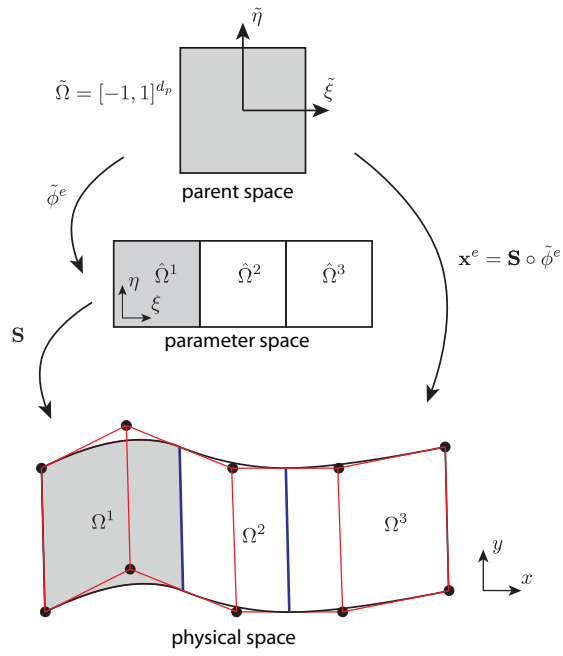


Figure 5: Diagrammatic interpretation of mappings from parent space ($\tilde{\Omega}$) through parametric space ($\hat{\Omega}$) to physical space (Ω). The parent space is where numerical quadrature rules are defined.

conventional FE implementations. The consequence of this additional space is that an additional mapping must be performed to operate in parent element coordinates. As shown in Fig. 5, two mappings are considered for IGA with NURBS: a mapping $\tilde{\phi}^e : \tilde{\Omega} \rightarrow \hat{\Omega}^e$ and $\mathbf{S} : \hat{\Omega} \rightarrow \Omega$. The mapping $\mathbf{x}^e : \tilde{\Omega} \rightarrow \Omega^e$ is given by the composition $\mathbf{S} \circ \tilde{\phi}^e$.

For a given element e , the geometry is expressed as

$$\mathbf{x}^e(\tilde{\xi}) = \sum_{a=1}^{n_{en}} \mathbf{P}_a^e N_a^e(\tilde{\xi}) \quad (23)$$

where a is a local basis function index, $n_{en} = (p+1)^{d_p}$ is the number of non-zero basis functions over element e and \mathbf{P}_a^e, R_a^e are the control point and NURBS basis function associated with index a respectively. We employ the commonly used notation of an element connectivity mapping [42] which translates a local basis function index to a global index through

$$A = \text{IEN}(a, e) \quad (24)$$

Global and local control points are therefore related through $\mathbf{P}_A \equiv \mathbf{P}_{\text{IEN}(a,e)} \equiv \mathbf{P}_a^e$ with similar expressions for R_a^e . A field $\mathbf{u}(\mathbf{x})$ which governs our relevant PDE can also be discretised in a similar manner to Equation (23) as

$$\mathbf{u}^e(\tilde{\xi}) = \sum_{a=1}^{n_{en}} \mathbf{d}_a^e N_a^e(\tilde{\xi}) \quad (25)$$

where \mathbf{d}_a^e represents a control (nodal) variable. In contrast to conventional discretisations, these coefficients are not in general interpolatory at nodes. This is similar to the case of meshless methods built on non-interpolatory shape functions such as the moving least squares (MLS) [46, 47, 48].

4.2. Solid-beam coupling

The solid part and the beam part are discretised into finite elements, cf. Fig. 6. In what follows discussion is made on the discretisation of the solid, of the beam and the coupling interface.

Based on the weak form given in Equation (15), the discrete equation reads

$$(\mathbf{K}^s + \mathbf{K}^b + \mathbf{K}^n + (\mathbf{K}^n)^T + \mathbf{K}^{st}) \mathbf{a} = \mathbf{f} \quad (26)$$

where $\mathbf{K}^{s/b}$ are the stiffness matrices of the solid and beam, respectively; \mathbf{K}^s and \mathbf{K}^n are the coupling matrices. The superscript st indicates that \mathbf{K}^{st} is the stabilisation coupling matrix (involving α). In the above, \mathbf{a} represents the nodal displacement vector. The external force vector is designated by \mathbf{f} .

4.2.1. Discretisation of the solid

The solid discretisation is standard and the corresponding stiffness matrix is given by

$$\mathbf{K}^s = \int_{\Omega^s} (\mathbf{B}^s)^T \mathbf{C}^s \mathbf{B}^s d\Omega = \bigcup_{e=1}^{n_{els}} \int_{\Omega_e^s} (\mathbf{B}_e^s)^T \mathbf{C}^s \mathbf{B}_e^s d\Omega \quad (27)$$

where n_{els} denotes the number of solid elements of Ω^s and \bigcup denotes the standard assembly operator; \mathbf{B}^s is the standard strain-displacement matrix and \mathbf{C}^s is the elasticity matrix. For two dimensional element e , \mathbf{B}_e^s is given by

$$\mathbf{B}_e^s = \begin{bmatrix} N_{1,x}^s & 0 & N_{2,x}^s & 0 & \dots \\ 0 & N_{1,y}^s & 0 & N_{2,y}^s & \dots \\ N_{1,y}^s & N_{1,x}^s & N_{2,y}^s & N_{2,x}^s & \dots \end{bmatrix} \quad (28)$$

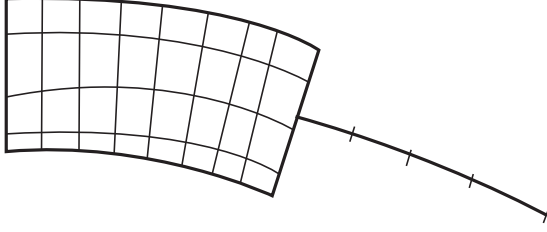


Figure 6: Finite element discretisations of the solid and the beam.

Expressions for three dimensional elements can be found in many FEM textbooks e.g., [42]. The notation $N_{I,x}$ denotes the derivative of shape function N_I with respect to x . This notation for partial derivatives will be used in subsequent sections.

The external force vector due to the solid part, if exists, is given by (for sake of simplicity, body force was omitted)

$$\mathbf{f}^s = \int_{\Gamma_t^s} (\mathbf{N}^s)^T \bar{\mathbf{t}} d\Gamma \quad (29)$$

where \mathbf{N}_e^s denotes the matrix of shape functions. For 2D, it is given by

$$\mathbf{N}_e^s = \begin{bmatrix} N_1^s & 0 & N_2^s & 0 & \dots \\ 0 & N_1^s & 0 & N_2^s & \dots \end{bmatrix} \quad (30)$$

4.2.2. Discretisation of the beam

Since NURBS facilitate the implementation of rotation free beam elements, we use NURBS to discretise the beam transverse displacement field

$$w = N_I w_I \quad (31)$$

where w_I denotes the control point transverse displacement. The resulting stiffness matrix reads [43]

$$\mathbf{K}^b = \int_{\Omega^b} E I \mathbf{B}^b (\mathbf{B}^b)^T d\Omega = \bigcup_{e=1}^{nelb} \int_{\Omega_e^b} E I \mathbf{B}_e^b (\mathbf{B}_e^b)^T d\Omega \quad (32)$$

where $nelb$ denotes the number of beam elements and \mathbf{B}_e^b denotes a vector containing the second derivatives of the shape functions associated with element e with respect to \bar{x} .

4.2.3. Coupling matrices

In order to focus on the coupling itself, we assume that the coordinate system of the beam is identical to the global one. Therefore rotation and transformation matrices are unnecessary. We postpone the treatment of a general case to Section 4.5.2.

The displacement field of the beam defined for a point on the coupling interface is given by, cf. Equation (4)

$$\begin{bmatrix} u_x^b \\ u_y^b \end{bmatrix} = \begin{bmatrix} -y N_{I,x} \\ N_I \end{bmatrix} w_I \equiv \mathbf{N}^b \mathbf{a}^b \quad (33)$$

And the strain field defined in Equation (7) can be written as

$$\boldsymbol{\epsilon}^b = \begin{bmatrix} \epsilon_{xx}^b \\ \epsilon_{yy}^b \\ 2\epsilon_{xy}^b \end{bmatrix} = \begin{bmatrix} -yN_{I,xx} \\ 0 \\ 0 \end{bmatrix} w_I \equiv \mathbf{B}^{b,c} \mathbf{a}^b \quad (34)$$

The jump and average operators defined in Equation (16) are thus given by

$$\begin{aligned} [\mathbf{u}] &= \mathbf{N}^s(\mathbf{x}) \mathbf{a}^s - \mathbf{N}^b(\mathbf{x}) \mathbf{a}^b \\ \{\boldsymbol{\sigma}\} &= \frac{1}{2} (\mathbf{C}^s \mathbf{B}^s \mathbf{a}^s + \mathbf{C}^b \mathbf{B}^{b,c} \mathbf{a}^b) \end{aligned} \quad (35)$$

where \mathbf{C}^b was defined in Equation (7).

Using Equation (35) and from the last three terms in the left hand side of the weak form given in Equation (15), one obtains the following expression for the coupling matrices

$$\mathbf{K}^n = \begin{bmatrix} -\int_{\Gamma^*} \mathbf{N}^{sT} \mathbf{n} \frac{1}{2} \mathbf{C}^s \mathbf{B}^s d\Gamma & -\int_{\Gamma^*} \mathbf{N}^{sT} \mathbf{n} \frac{1}{2} \mathbf{C}^b \mathbf{B}^{b,c} d\Gamma \\ \int_{\Gamma^*} \mathbf{N}^{bT} \mathbf{n} \frac{1}{2} \mathbf{C}^s \mathbf{B}^s d\Gamma & \int_{\Gamma^*} \mathbf{N}^{bT} \mathbf{n} \frac{1}{2} \mathbf{C}^b \mathbf{B}^{b,c} d\Gamma \end{bmatrix} \quad (36)$$

and by

$$\mathbf{K}^{st} = \begin{bmatrix} \int_{\Gamma^*} \alpha \mathbf{N}^{sT} \mathbf{N}^s d\Gamma & -\int_{\Gamma^*} \alpha \mathbf{N}^{sT} \mathbf{N}^b d\Gamma \\ -\int_{\Gamma^*} \alpha \mathbf{N}^{bT} \mathbf{N}^s d\Gamma & \int_{\Gamma^*} \alpha \mathbf{N}^{bT} \mathbf{N}^b d\Gamma \end{bmatrix} \quad (37)$$

And the normal vector in a matrix notation is represented as the following matrix

$$\mathbf{n} = \begin{bmatrix} n_x & 0 & n_y \\ 0 & n_y & n_x \end{bmatrix} \quad (38)$$

4.2.4. Implementation of coupling matrices

Computation of the coupling matrices involves integrals over the coupling interface Γ^* of which integrands are the shape functions and its derivatives which are zero everywhere except at elements that intersect Γ^* . We denote Ω_b^s a set of solid elements that intersect with Γ^* and Ω_b^b the beam element that intersects Γ^* , see Fig. 7.

We then use the trace mesh of Ω_b^s on Γ^* to compute the coupling matrices. For example, the following term taken from \mathbf{K}^{st} are computed as

$$\int_{\Gamma^*} \alpha \mathbf{N}^{sT} \mathbf{N}^b d\Gamma = \bigcup_{e=1}^{nce} \int_{\Gamma_e^*} \alpha \mathbf{N}^{sT} \mathbf{N}^b d\Gamma = \bigcup_{e=1}^{nce} \sum_{i=1}^{ngp} \alpha \mathbf{N}^{sT}(\boldsymbol{\xi}_i^s) \mathbf{N}^b(y, \boldsymbol{\xi}_i^b) w_i^s \quad (39)$$

where nce (number of coupling elements) denotes the number of $\Omega_{b,e}^s$; ngp is the number of Gauss points and w_i^s are the weights. This matrix will be assembled to the rows of the global stiffness matrix using the connectivity array of solid element $\Omega_{b,e}^s$ and to the columns corresponding to the beam element Ω_b^b .

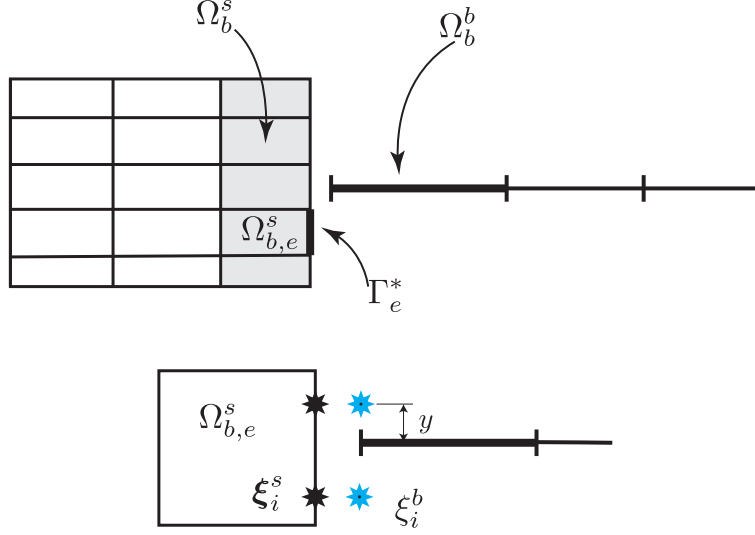


Figure 7: Coupling a beam and a continuum using a Nitsche based method.

4.3. Stabilisation parameter

The Nitsche's bilinear form in the weak form given in Equation (15) can be written as

$$a(\mathbf{u}, \mathbf{v}) = \tilde{a}(\mathbf{u}, \mathbf{v}) + \alpha \int_{\Gamma_*} \llbracket \mathbf{u} \rrbracket \cdot \llbracket \mathbf{v} \rrbracket d\Gamma - \int_{\Gamma_*} (\llbracket \mathbf{v} \rrbracket \otimes \mathbf{n}^s) : \{\boldsymbol{\sigma}\} d\Gamma - \int_{\Gamma_*} (\llbracket \mathbf{u} \rrbracket \otimes \mathbf{n}^s) : \{\boldsymbol{\sigma}(\mathbf{v})\} d\Gamma \quad (40)$$

where $\tilde{a}(\mathbf{u}, \mathbf{v})$ denotes the bilinear form of the bulk i.e., without the interfacial terms

$$\tilde{a}(\mathbf{u}, \mathbf{v}) = \int_{\Omega^s} \boldsymbol{\epsilon}(\mathbf{v}^s) : \boldsymbol{\sigma}^s d\Omega + \int_{\Omega^b} EI v_{,xx} u_{,xx} d\Omega \quad (41)$$

The problem is to find α such that the bilinear form is coercive i.e., $a(\mathbf{u}, \mathbf{u}) \geq c^{te} \|\mathbf{u}\|$. One can write $a(\mathbf{u}, \mathbf{u})$ as follows

$$a(\mathbf{u}, \mathbf{u}) = \tilde{a}(\mathbf{u}, \mathbf{u}) + \alpha \int_{\Gamma_*} \llbracket \mathbf{u} \rrbracket \cdot \llbracket \mathbf{u} \rrbracket d\Gamma - \int_{\Gamma_*} \llbracket \mathbf{u} \rrbracket \otimes \mathbf{n}^s : [\mathbf{C}^s : \boldsymbol{\epsilon}^s + \mathbf{C}^b : \boldsymbol{\epsilon}^b] d\Gamma \quad (42)$$

and the last term can be rewritten as

$$\int_{\Gamma_*} \llbracket \mathbf{u} \rrbracket \otimes \mathbf{n}^s : [\mathbf{C}^s : \boldsymbol{\epsilon}^s + \mathbf{C}^b : \boldsymbol{\epsilon}^b] d\Gamma = (\llbracket \mathbf{u} \rrbracket, \bar{\mathbf{t}})_{\Gamma^*} \quad (43)$$

where $(\cdot, \cdot)_{\Gamma^*}$ is the $L_2(\Gamma^*)$ scalar product.

For any scalar product and any parameter ϵ , one has

$$\|\mathbf{u} - \epsilon \mathbf{v}\|^2 = \|\mathbf{u}\|^2 + \epsilon^2 \|\mathbf{v}\|^2 - 2\epsilon(\mathbf{u}, \mathbf{v}) \quad (44)$$

where $\|\cdot\|$ is the norm equipped with (\cdot, \cdot) i.e., $\|\cdot\| = \sqrt{(\cdot, \cdot)}$. From this equation, one can write

$$(\mathbf{u}, \mathbf{v}) = \frac{1}{2\epsilon} \|\mathbf{u}\|^2 + \frac{\epsilon}{2} \|\mathbf{v}\|^2 - \|\mathbf{u} - \epsilon \mathbf{v}\|^2 \leq \frac{1}{2\epsilon} \|\mathbf{u}\|^2 + \frac{\epsilon}{2} \|\mathbf{v}\|^2 \quad (45)$$

If we apply Equation (45) to $([\mathbf{u}], \bar{\mathbf{t}})_{\Gamma^*}$, we have

$$([\mathbf{u}], \bar{\mathbf{t}})_{\Gamma^*} \leq \frac{1}{2\epsilon} \|[\mathbf{u}]\|_{\Gamma^*}^2 + \frac{\epsilon}{2} \|\bar{\mathbf{t}}\|_{\Gamma^*}^2 \quad (46)$$

Substituting Equation (46) into Equation (42) leads to the following

$$a(\mathbf{u}, \mathbf{u}) \geq \tilde{a}(\mathbf{u}, \mathbf{u}) + \left(\alpha - \frac{1}{2\epsilon}\right) \|[\mathbf{u}]\|_{\Gamma^*}^2 - \frac{\epsilon}{2} \|\bar{\mathbf{t}}\|_{\Gamma^*}^2 \quad (47)$$

The main idea of the method is to suppose the existence of a configuration-dependent constant C such that

$$\|\bar{\mathbf{t}}\|_{\Gamma^*}^2 \leq C^2 \tilde{a}(\mathbf{u}, \mathbf{u}) \quad (48)$$

which means that the flux are bounded by the gradient inside the domain.

Substituting Equation (48) into Equation (47) leads to the following

$$a(\mathbf{u}, \mathbf{u}) \geq \left(1 - \frac{C^2\epsilon}{2}\right) \tilde{a}(\mathbf{u}, \mathbf{u}) + \left(\alpha - \frac{1}{2\epsilon}\right) \|[\mathbf{u}]\|_{\Gamma^*}^2 \quad (49)$$

which indicates that the bilinear form is coercive if the following inequalities are satisfied

$$1 - \frac{C^2\epsilon}{2} \geq 0, \quad \alpha - \frac{1}{2\epsilon} \geq 0 \quad (50)$$

If we take $\epsilon = 1/C^2$, the first inequality in Equation (50) will be satisfied. Therefore the bilinear form a is positive definite if $\alpha > C^2/2$. In what follows we present a way to determine the constant C satisfying Equation (48). This is where one has to solve an eigenvalue problem.

The discrete version of Equation (48) is

$$\int_{\Gamma^*} (\mathbf{n}^s \mathbf{C}^s \boldsymbol{\epsilon}^s + \mathbf{n}^s \mathbf{C}^b \boldsymbol{\epsilon}^b)^T (\mathbf{C}^s \boldsymbol{\epsilon}^s \mathbf{n}^s + \mathbf{C}^b \boldsymbol{\epsilon}^b \mathbf{n}^s) d\Gamma \leq C^2 \left(\int_{\Omega^s} (\boldsymbol{\epsilon}^s)^T \mathbf{C}^s \boldsymbol{\epsilon}^s d\Omega + \int_{\Omega^b} (\boldsymbol{\epsilon}^b)^T E I \boldsymbol{\epsilon}^b d\Omega \right) \quad (51)$$

Or

$$\frac{\mathbf{a}^T \mathbf{H} \mathbf{a}}{\mathbf{a}^T \tilde{\mathbf{K}} \mathbf{a}} \leq C^2 \quad (52)$$

where $\tilde{\mathbf{K}} = \mathbf{K}^s + \mathbf{K}^b$ is the total stiffness matrix without coupling terms; \mathbf{a} is the unknowns vector and \mathbf{H} is given by

$$\mathbf{H} = \begin{bmatrix} \int_{\Gamma^*} (\mathbf{B}^s)^T (\mathbf{C}^s)^T (\mathbf{n}^s)^T \mathbf{n}^s \mathbf{C}^s \mathbf{B}^s d\Gamma & \int_{\Gamma^*} (\mathbf{B}^s)^T (\mathbf{C}^s)^T (\mathbf{n}^s)^T \mathbf{n}^s \mathbf{C}^b \mathbf{B}^b d\Gamma \\ \int_{\Gamma^*} (\mathbf{B}^b)^T (\mathbf{C}^b)^T (\mathbf{n}^s)^T \mathbf{n}^s \mathbf{C}^s \mathbf{B}^s d\Gamma & \int_{\Gamma^*} (\mathbf{B}^b)^T (\mathbf{C}^b)^T (\mathbf{n}^s)^T \mathbf{n}^s \mathbf{C}^b \mathbf{B}^b d\Gamma \end{bmatrix} \quad (53)$$

So we need to find the maximum of the Rayleigh quotient R defined as $R = \frac{\mathbf{a}^T \mathbf{H} \mathbf{a}}{\mathbf{a}^T \tilde{\mathbf{K}} \mathbf{a}}$. By theorem this maximum is

λ_1 , the largest eigenvalue of matrix $\tilde{\mathbf{K}}^{-1}\mathbf{H}$. Finally the stabilisation parameter α is chosen according to

$$\alpha = \frac{\lambda_1}{2} \quad (54)$$

4.4. Solid-plate coupling

The discrete equation is identical to Equation (26) in which \mathbf{K}^b will be replaced by \mathbf{K}^p . The discretisation of the solid was presented in Section 4.2.1. Therefore only the discretisation of the plate and the computation of coupling matrices are presented.

4.4.1. Discretisation of the plate

The deflection w is approximated as follows

$$w = N_I(\xi, \eta)w_I \quad (55)$$

where $N_I(\xi, \eta)$ is the NURBS basis function associated with node I and w_I is the nodal deflection.

The plate element stiffness matrix is standard (see e.g., [43]) and given by

$$\mathbf{K}_e^p = \int_{\Omega_e^p} (\mathbf{B}_e^p)^T \mathbf{D}_b^p \mathbf{B}_e^p d\Omega \quad (56)$$

where the constitutive matrix \mathbf{D}^p reads

$$\mathbf{D}_b^p = \frac{Eh^3}{12(1-\nu^2)} \begin{bmatrix} 1 & \nu & 0 \\ \nu & 1 & 0 \\ 0 & 0 & 0.5(1-\nu) \end{bmatrix} \quad (57)$$

and the element displacement-curvature matrix \mathbf{B}_e^p is given by

$$\mathbf{B}_e^p = \begin{bmatrix} N_{1,xx} & N_{2,xx} & \cdots & N_{n,xx} \\ N_{1,yy} & N_{2,yy} & \cdots & N_{n,yy} \\ 2N_{1,xy} & 2N_{2,xy} & \cdots & 2N_{n,xy} \end{bmatrix} \quad (58)$$

where n denotes the number of basis functions of element e .

4.4.2. Coupling matrices

Using Equation (55), the displacement field in Equation (10) is given by

$$\mathbf{u}^p = \begin{bmatrix} -x_3 N_{I,1} \\ -x_3 N_{I,2} \\ N_I \end{bmatrix} [w_I] \equiv \mathbf{N}_I^p \mathbf{a}_I^p \quad (59)$$

and the strain field given in Equation (11) is written as

$$\begin{bmatrix} \epsilon_{11} \\ \epsilon_{22} \\ 2\epsilon_{12} \end{bmatrix} = \begin{bmatrix} -x_3 N_{I,11} \\ -x_3 N_{I,22} \\ -2x_3 N_{I,12} \end{bmatrix} [w_I] \equiv \mathbf{B}_I^{p,c} \mathbf{a}_I^p \quad (60)$$

The coupling matrices are thus given by Equations (36) and (37) where quantities with superscript b are replaced by ones with superscript p .

4.4.3. Implementation of coupling matrices

Basically the implementation is similar to the solid-beam coupling presented in Section 4.2.4, but much more involved due to the fact that one solid element $\Omega_{b,e}^s$ might interact with more than one plate element $\Omega_{b,e}^p$ or vice versa, Fig. 8 illustrates the former.

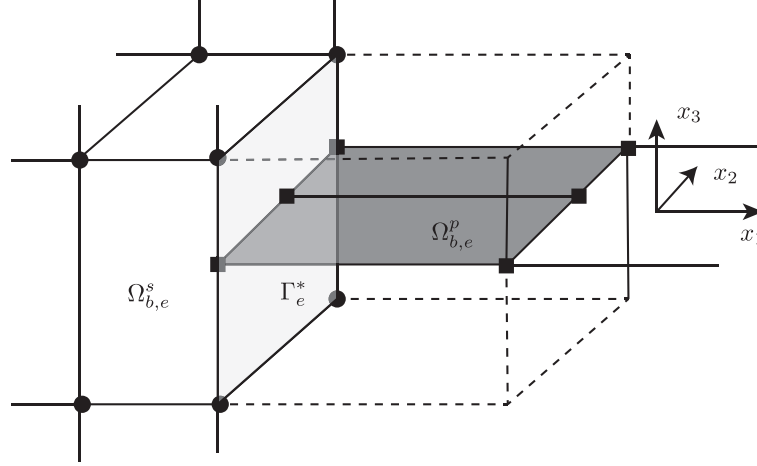


Figure 8: Coupling a plate and a 3D continuum using a Nitsche based method.

For each of the solid coupling elements, $\Omega_{b,e}^s$, a number of GPs $\{\xi_i, \eta_i, w_i\}_{i=1}^{ngp}$ are placed on the coupling surface Γ_e^* . Those GPs are transformed to the physical space and then transformed to (1) the parent space of the solid, $[-1, 1]^3$ and to (2) the parent space of the plate, $[-1, 1]^2$. The solid GPs are represented by $\xi_i^s = (\xi, \eta, \zeta)_i^s$ and the plate GPs by $\xi_i^p = (\xi, \eta)_i^p$. We refer to Fig. 9. Concretely, one performs the following operations

$$\begin{aligned} \mathbf{x}_i &= \mathbf{M}(\xi_i, \eta_i) \mathbf{x}_{\Gamma_e^*} \\ \mathbf{x}_i &= \mathbf{N}^s(\xi_i^s, \eta_i^s, \zeta_i^s) \mathbf{x}_e^s \rightarrow (\xi_i^s, \eta_i^s, \zeta_i^s) \\ \mathbf{x}_i^* &= \mathbf{N}^p(\xi_i^p, \eta_i^p) \mathbf{x}_e^p \rightarrow (\xi_i^p, \eta_i^p) \end{aligned} \quad (61)$$

where $\mathbf{x}_{\Gamma_e^*}$ denotes the coordinates of the nodes on the coupling surface Γ_e^* . The nodal coordinates of solid and plate elements are designated by $\mathbf{x}_e^{s/p}$. The last two of Equation (61) are solved using a Newton-Raphson method.

Coupling terms can now be computed, for example

$$\int_{\Gamma^*} \alpha \mathbf{N}^{sT} \mathbf{N}^p d\Gamma = \bigcup_{e=1}^{nbe} \int_{\Omega_e^*} \alpha \mathbf{N}^{sT} \mathbf{N}^p d\Omega = \bigcup_{e=1}^{nbe} \sum_{i=1}^{ngp} \alpha \mathbf{N}^{sT}(\xi_i^s) \mathbf{N}^p(\xi_i^p) \bar{w}_i \quad (62)$$

with $\bar{w}_i = w_i \|\mathbf{a}_1 \times \mathbf{a}_2\|$ where \mathbf{a}_α are the tangent vectors of Γ_e^* defined by

$$\mathbf{a}_1 = \mathbf{M}_{,\xi} \mathbf{x}_{\Gamma_e^*}, \quad \mathbf{a}_2 = \mathbf{M}_{,\eta} \mathbf{x}_{\Gamma_e^*} \quad (63)$$

These tangents are needed to compute the outward normal vector $\mathbf{n} = \frac{\mathbf{a}_1 \times \mathbf{a}_2}{\|\mathbf{a}_1 \times \mathbf{a}_2\|}$ and put in a matrix notation, we write

the normal as follows

$$\mathbf{n} = \begin{bmatrix} n_x & 0 & 0 & n_y & 0 & n_z \\ 0 & n_y & 0 & n_x & n_z & 0 \\ 0 & 0 & n_z & 0 & n_y & n_x \end{bmatrix} \quad (64)$$

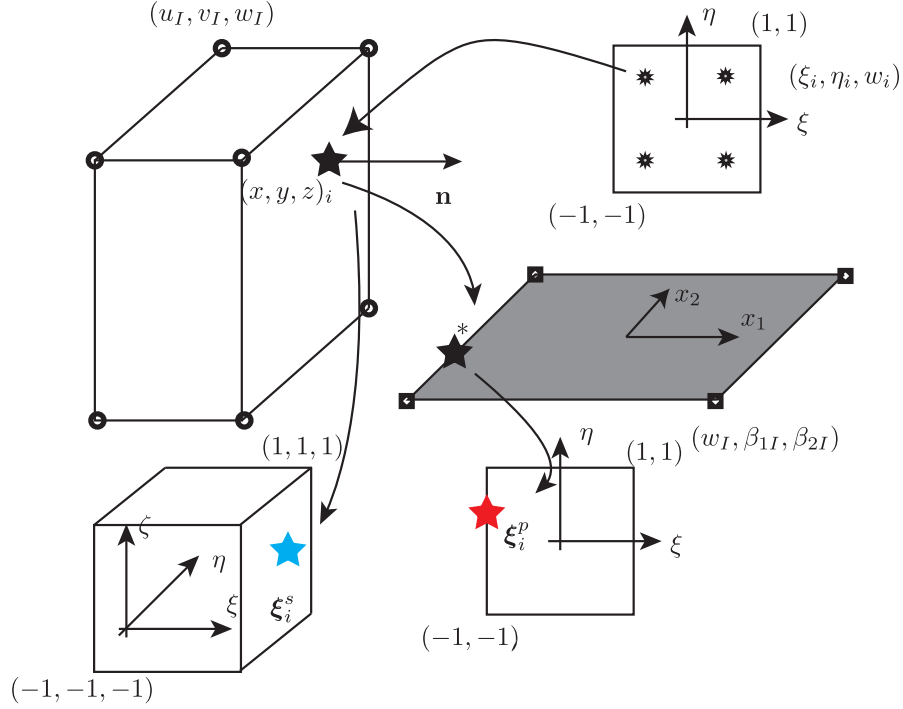


Figure 9: Coupling a plate and a 3D continuum using a Nitsche based method: determination of Gauss points for evaluating the coupling terms.

Care must be taken when assembling the coupling matrix given in Equation (62) since it depends on to which plate element $\Omega_{b,e}^p$ the GP ξ_i^p belongs.

Remark 4.1. Due to the mismatch between the number of stress components in the solid (six) and the plate (three), the 6×6 solid constitutive matrix \mathbf{C}^s used in the coupling matrices are reduced to a 3×6 matrix in which the third, fifth and sixth rows (correspond to zero stresses in the plate theory) are removed. Accordingly, the normal matrix \mathbf{n} is reduced as

$$\mathbf{n} = \begin{bmatrix} n_x & 0 & n_y \\ 0 & n_y & n_x \\ 0 & 0 & 0 \end{bmatrix} \quad (65)$$

Remark 4.2. The previous discussion was for the standard Lagrange finite elements which are defined in the parent space where quadrature rules are defined. For NURBS-based isogeometric finite elements, the basis are defined in the parameter space and thus there is a slight modification to the process. First, the GPs $\{\tilde{\xi}_i, \tilde{\eta}_i, w_i\}_{i=1}^{ngp}$ are transformed to the parameter space $\{\xi_i, \eta_i, w_i\}_{i=1}^{ngp}$, we refer to [18, 19] for details. Next, Equation (61) is used as usual to compute

GPs defined now in the parameter space. Note also that if Bézier extraction is used to implement NURBS-based IGA, see e.g., [49], then this remark can be ignored since with Bézier extraction the basis are the Bernstein basis, which are defined in the parent space as well, multiplied with some sparse matrices.

4.5. Shear deformation models

The proposed formulation can be straightforwardly extended to shear deformation beam/plate theories. In this section, a treatment of Timoshenko beam (with axial deformation included) and Mindlin-Reissner plate theory is given.

4.5.1. Timoshenko beam

The element stiffness matrix associated with a Timoshenko beam element is standard and thus not presented here. Instead, we focus on the coupling matrices. The displacement field of a Timoshenko beam is given by

$$\begin{aligned} u_x^b &= u(x) - y\theta(x) \\ u_y^b &= w(x) \end{aligned} \quad (66)$$

where u, w and θ are the axial, transverse displacement and the rotation of the beam mid-line, respectively. The strain field is therefore given by

$$\epsilon_{xx}^b = u_{,x} - y\theta_{,x}, \quad \epsilon_{yy}^b = 0, \quad 2\epsilon_{xy}^b = -\theta + w_{,x} \quad (67)$$

The stresses are defined as

$$\begin{bmatrix} \sigma_{xx}^b \\ \sigma_{yy}^b \\ \sigma_{xy}^b \end{bmatrix} = \begin{bmatrix} E & 0 & 0 \\ 0 & 0 & 0 \\ 0 & 0 & kG \end{bmatrix} \begin{bmatrix} \epsilon_{xx}^b \\ \epsilon_{yy}^b \\ 2\epsilon_{xy}^b \end{bmatrix} \equiv \mathbf{C}^b \boldsymbol{\epsilon}^b \quad (68)$$

where k denotes the shear correction factor (a value of 5/6 is usually used) and G is the shear modulus.

For sake of simplicity, assume that the beam is discretised by two-noded linear elements. In this case, the displacements of any beam element e are given by

$$\begin{bmatrix} u_x^b \\ u_y^b \end{bmatrix} = \underbrace{\begin{bmatrix} N_1 & 0 & -yN_1 & N_2 & 0 & -yN_2 \\ 0 & N_1 & 0 & 0 & N_2 & 0 \end{bmatrix}}_{\mathbf{N}^b} \begin{bmatrix} u_1 \\ w_1 \\ \theta_1 \\ u_2 \\ w_2 \\ \theta_2 \end{bmatrix} \quad (69)$$

where (u_I, w_I, θ_I) are the nodal unknowns at node I of a beam element; $N_I(\xi)$ are the univariate shape functions, and the strains are given by

$$\boldsymbol{\epsilon}^b = \begin{bmatrix} \epsilon_{xx}^b \\ \epsilon_{yy}^b \\ 2\epsilon_{xy}^b \end{bmatrix} = \underbrace{\begin{bmatrix} N_{1,x} & 0 & -yN_{1,x} & N_{2,x} & 0 & -yN_{2,x} \\ 0 & 0 & 0 & 0 & 0 & 0 \\ 0 & N_{1,x} & -N_1 & 0 & N_{2,x} & -N_2 \end{bmatrix}}_{\mathbf{B}^{b,c}} \begin{bmatrix} u_1 \\ w_1 \\ \theta_1 \\ u_2 \\ w_2 \\ \theta_2 \end{bmatrix} \quad (70)$$

Having obtained \mathbf{N}^b , \mathbf{C}^b and $\mathbf{B}^{b,c}$, the coupling matrices given in Equations (36) and (37) can be computed.

4.5.2. Plane frame analysis

Firstly we introduce the rotation matrix \mathbf{R} that relates the local nodal unknowns to the global unknowns as

$$\underbrace{\begin{bmatrix} u_1 \\ w_1 \\ \beta_1 \\ u_2 \\ w_2 \\ \beta_2 \end{bmatrix}}_{\mathbf{a}^b} = \underbrace{\begin{bmatrix} \cos \phi & \sin \phi & 0 & 0 & 0 & 0 \\ -\sin \phi & \cos \phi & 0 & 0 & 0 & 0 \\ 0 & 0 & 1 & 0 & 0 & 0 \\ 0 & 0 & 0 & \cos \phi & \sin \phi & 0 \\ 0 & 0 & 0 & -\sin \phi & \cos \phi & 0 \\ 0 & 0 & 0 & 0 & 0 & 1 \end{bmatrix}}_{\mathbf{R}} \underbrace{\begin{bmatrix} u_1 \\ w_1 \\ \beta_1 \\ u_2 \\ w_2 \\ \beta_2 \end{bmatrix}}_{\mathbf{a}_l^b} \quad (71)$$

where ϕ is the angle between x_1 and x and subscript l represents quantities in the local coordinate system.

The jump operator is rewritten as follows after transforming the beam quantities to the global system

$$[\mathbf{u}] = \mathbf{u}^s - \mathbf{u}^b = \mathbf{u}^s - \mathbf{R}_v^T \mathbf{u}_l^b = \mathbf{N}^s \mathbf{a}^s - \mathbf{R}_v^T \mathbf{N}^b \mathbf{a}_l^b = \mathbf{N}^s \mathbf{a}^s - \mathbf{R}_v^T \mathbf{N}^b \mathbf{R} \mathbf{a}^b \quad (72)$$

where \mathbf{N}^b is given in Equation (69) and \mathbf{R}_v denotes the rotation matrix for vector transformation defined in Equation (6).

The averaged stress operator is rewritten as

$$\{\boldsymbol{\sigma}\} = \frac{1}{2}(\boldsymbol{\sigma}^s + \boldsymbol{\sigma}^b) = \frac{1}{2}(\mathbf{C}^s \mathbf{B}^s \mathbf{a}^s + \mathbf{T}^{-1} \mathbf{C}^b \mathbf{B}^{b,c} \mathbf{R} \mathbf{a}^b) \quad (73)$$

Therefore, the coupling matrices are given by

$$\mathbf{K}^n = \begin{bmatrix} -\int_{\Gamma^*} \mathbf{N}^{sT} \mathbf{n} \frac{1}{2} \mathbf{C}^s \mathbf{B}^s d\Gamma & -\int_{\Gamma^*} \mathbf{N}^{sT} \mathbf{n} \frac{1}{2} \mathbf{T}^{-1} \mathbf{C}^b \mathbf{B}^{b,c} \mathbf{R} d\Gamma \\ \int_{\Gamma^*} \mathbf{R}^T \mathbf{N}^{bT} \mathbf{R}_v \mathbf{n} \frac{1}{2} \mathbf{C}^s \mathbf{B}^s d\Gamma & \int_{\Gamma^*} \mathbf{R}^T \mathbf{N}^{bT} \mathbf{R}_v \mathbf{n} \frac{1}{2} \mathbf{T}^{-1} \mathbf{C}^b \mathbf{B}^{b,c} \mathbf{R} d\Gamma \end{bmatrix} \quad (74)$$

and by

$$\mathbf{K}^{st} = \begin{bmatrix} \int_{\Gamma^*} \alpha \mathbf{N}^{sT} \mathbf{N}^s d\Gamma & -\int_{\Gamma^*} \alpha \mathbf{N}^{sT} \mathbf{R}_v^T \mathbf{N}^b \mathbf{R} d\Gamma \\ -\int_{\Gamma^*} \alpha \mathbf{R}^T \mathbf{N}^{bT} \mathbf{R}_v \mathbf{N}^s d\Gamma & \int_{\Gamma^*} \alpha \mathbf{R}^T \mathbf{N}^{bT} \mathbf{N}^b \mathbf{R} d\Gamma \end{bmatrix} \quad (75)$$

4.5.3. Mindlin-Reissner plate

The independent variables of the Mindlin-Reissner plate theory are the rotation angle β_α ($\alpha = 1, 2$) and mid-surface (transverse) displacement w . The displacement field of the plate is given by

$$\begin{aligned} u_1(x_1, x_2, x_3) &= -x_3 \beta_1 \\ u_2(x_1, x_2, x_3) &= -x_3 \beta_2 \\ u_3(x_1, x_2, x_3) &= w(x_1, x_2) \end{aligned} \quad (76)$$

The strain field is then given by

$$\begin{aligned}
\epsilon_{11} &= -x_3\beta_{1,1} \\
\epsilon_{22} &= -x_3\beta_{2,2} \\
2\epsilon_{12} &= -x_3(\beta_{1,2} + \beta_{2,1}) \\
2\epsilon_{13} &= -\beta_1 + w_{,1} \\
2\epsilon_{23} &= -\beta_2 + w_{,2}
\end{aligned} \tag{77}$$

Finite element approximations of the displacement and rotations are given by

$$w = N_I(\xi, \eta)w_I, \quad \beta_\alpha = N_I(\xi, \eta)\beta_{\alpha I} \tag{78}$$

where $N_I(\xi, \eta)$ is the shape function associated with node I and $w_I, \beta_{1I}, \beta_{2I}$ denote the nodal unknowns that include the nodal deflection and two rotations.

The element plate stiffness matrix is now defined as, see e.g., [43]

$$\mathbf{K}_e^p = \int_{\Omega_e^p} [(\mathbf{B}_{be}^p)^T \mathbf{D}_b^p \mathbf{B}_{be}^p + (\mathbf{B}_{se}^p)^T \mathbf{D}_s^p \mathbf{B}_{se}^p] d\Omega \tag{79}$$

and the element displacement-curvature matrix \mathbf{B}_{be} and displacement-shearing matrix are given by

$$\mathbf{B}_{be}^p = [\mathbf{B}_{b1} \quad \mathbf{B}_{b2} \quad \cdots \quad \mathbf{B}_{bn}], \quad \mathbf{B}_{se}^p = [\mathbf{B}_{s1} \quad \mathbf{B}_{s2} \quad \cdots \quad \mathbf{B}_{sn}] \tag{80}$$

where components are given by

$$\mathbf{B}_{bI} = \begin{bmatrix} 0 & N_{I,1} & 0 \\ 0 & 0 & N_{I,2} \\ 0 & N_{I,2} & N_{I,1} \end{bmatrix}, \quad \mathbf{B}_{sI} = \begin{bmatrix} N_{I,1} & -N_I & 0 \\ N_{I,2} & 0 & -N_I \end{bmatrix} \tag{81}$$

Matrices \mathbf{D}_b^p and \mathbf{D}_s^p denote the bending constitutive matrix and shear constitutive matrix, respectively. The former was given in Equation (57) and the latter is given by

$$\mathbf{D}_s^p = \frac{kEh}{2(1+\nu)} \begin{bmatrix} 1 & 0 \\ 0 & 1 \end{bmatrix} \tag{82}$$

where k is the shear correction factor.

Next, we focus on the coupling matrices. Firstly the displacement field given in Equation (76) can be written as

$$\mathbf{u}^{\text{plate}} = \begin{bmatrix} 0 & -x_3 N_I & 0 \\ 0 & 0 & -x_3 N_I \\ N_I & 0 & 0 \end{bmatrix} \begin{bmatrix} w \\ \beta_1 \\ \beta_2 \end{bmatrix}_I = \mathbf{N}_I^p \mathbf{a}_I^p \tag{83}$$

and the strain field given in Equation (77) as

$$\begin{bmatrix} \epsilon_{11} \\ \epsilon_{22} \\ 2\epsilon_{12} \\ 2\epsilon_{23} \\ 2\epsilon_{13} \end{bmatrix} = \begin{bmatrix} 0 & -x_3 N_{I,1} & 0 \\ 0 & 0 & -x_3 N_{I,2} \\ 0 & -x_3 N_{I,2} & -x_3 N_{I,1} \\ N_{I,2} & 0 & -N_I \\ N_{I,1} & -N_I & 0 \end{bmatrix} \begin{bmatrix} w_I \\ \beta_{1I} \\ \beta_{2I} \end{bmatrix} \equiv \mathbf{B}_I^{p,c} \mathbf{a}_I^p \quad (84)$$

And finally the stress field is given by

$$\begin{bmatrix} \sigma_{11} \\ \sigma_{22} \\ \sigma_{12} \\ \sigma_{23} \\ \sigma_{13} \end{bmatrix} = \begin{bmatrix} 1 & \nu & 0 \\ \nu & 1 & 0 \\ 0 & 0 & 0.5(1-\nu) \\ 0 & 0 & 0 \\ 0 & 0 & 0 \end{bmatrix} \begin{bmatrix} 0 & 0 \\ 0 & 0 \\ 0 & 0 \\ \frac{kE}{2(1+\nu)} \begin{bmatrix} 1 & 0 \\ 0 & 1 \end{bmatrix} \end{bmatrix} \begin{bmatrix} \epsilon_{11} \\ \epsilon_{22} \\ 2\epsilon_{12} \\ 2\epsilon_{23} \\ 2\epsilon_{13} \end{bmatrix} \equiv \mathbf{C}^p \boldsymbol{\epsilon}^p \quad (85)$$

Having obtained \mathbf{N}^p , \mathbf{C}^p and $\mathbf{B}_I^{p,c}$, the coupling matrices given in can be computed.

5. Non-conforming coupling

In this section we present a non-conforming coupling formulation. In the literature when applied for mesh coupling the method was referred to as composite grids [5] or embedded mesh method [7]. Due to the great similarity between solid/beam and solid/plate coupling, only the former is discussed, cf. Fig. 10.

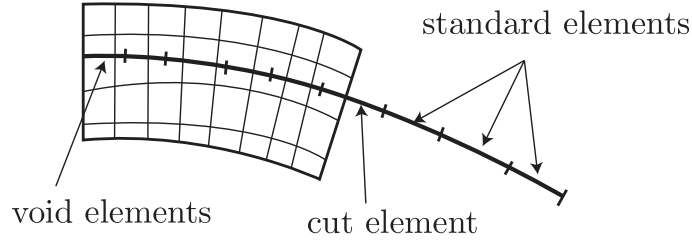


Figure 10: Volume metric coupling of a solid and a beam.

The weak form and thus the discrete equations are exactly the same (see Section 4.2). There are however changes in the treatment of beam elements of which some are overlapped by solid elements. Using the terminology from [7] (which was actually adopted from extended finite element method–XFEM [50]) we divide the beam elements into three groups namely (1) standard elements which do not intersect with solid elements, (2) cut elements (cut by the boundaries of the embedded solid) and (3) void elements which are completely covered by the solid. Void elements do not contribute to the total stiffness of the system. Therefore, nodes whose support is completely covered by the solid are considered to be inactive and removed from the stiffness matrix. Another way that preserves the dimension of the stiffness matrix is to fix those inactive beam nodes.

For numerical integration of cut elements, the sub-triangulation (for solid/plate problem) as usually used in the context of XFEM [51] can be adopted. However, in the provided examples, we use a simpler (easy for implementation) technique: a large number of Gauss points is used for cut elements and those points which are in the solid domain are skipped.

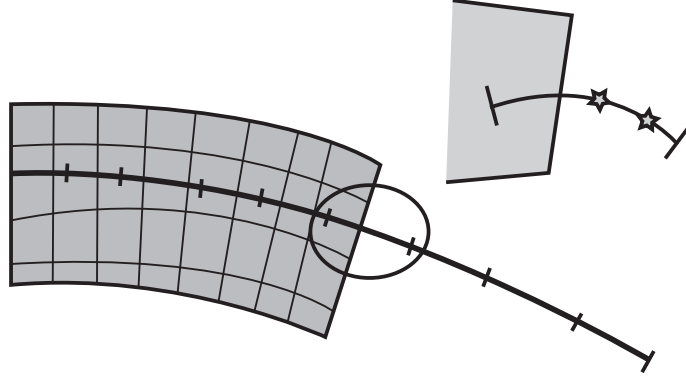


Figure 11: Volume metric coupling of a solid and a beam.

Remark 5.1. One might ask why the void elements are necessary although they do not contribute to the global stiffness matrix. The answer is that they are needed in a model adaptive formulation where at a certain time step, they are void elements but in other time steps they become active when the refined solid is no longer needed there.

6. Numerical examples

In accordance to the two topics presented previously, in this section, numerical examples on beam/continuum and plate/continuum coupling are presented to demonstrate the performance of the proposed formulation. Specially, the following examples are provided together with their *raison d'être*.

1. Beam-continuum coupling
 - (a) Cantilever beam: convergence analysis, stabilisation, non-symmetric Nitsche...
 - (b) Cantilever beam: non-conforming coupling
 - (c) Frame analysis
2. Plate-continuum coupling
 - (a) Cantilever beam (3D/plate coupling)
 - (b) Cantilever beam (non-conforming coupling)
 - (c) Non-conforming coupling of a square plate

Unless otherwise stated, we use MIGFEM—an open source Matlab IGA code⁵ for our computations and the Timoshenko beam theory and the Reissner-Mindlin plate theory. The visualisation was performed in Paraview [52]. In all examples domains where reduced models such as beams and plates are utilized are assumed to be known *a priori*. For all considered examples, the symmetric and non symmetric versions of the Nitsche's method are both utilized. A rule of $(p+1) \times (q+1)$ Gaussian quadrature can be applied for two-dimensional elements in which p and q denote the orders of the chosen basis functions in the ξ and η direction. The same procedure is also used for NURBS basis functions in the present work, although it should be emphasised that Gaussian quadrature is not optimal for IGA. Research is currently focussed on optimal integration techniques such as that in [53, 54] in which an optimal quadrature rule, known as the half-point rule, has been applied.

⁵which is available at <https://sourceforge.net/projects/cmcodes/>

6.1. Continuum-beam coupling

6.1.1. Timoshenko beam: conforming coupling

Consider a beam of dimensions $L \times D$ (unit thickness), subjected to a parabolic traction at the free end as shown in Fig. 12. The beam is considered to be of unit depth and is in plane stress state. The parabolic traction is given by

$$t_y(y) = -\frac{P}{2I} \left(\frac{D^2}{4} - y^2 \right) \quad (86)$$

where $I = D^3/12$ is the moment of inertia. The exact displacement field of this problem is [55]

$$\begin{aligned} u_x(x, y) &= \frac{Py}{6EI} \left[(6L - 3x)x + (2 + \nu) \left(y^2 - \frac{D^2}{4} \right) \right] \\ u_y(x, y) &= -\frac{P}{6EI} \left[3\nu y^2(L - x) + (4 + 5\nu) \frac{D^2 x}{4} + (3L - x)x^2 \right] \end{aligned} \quad (87)$$

and the exact stresses are

$$\sigma_{xx}(x, y) = \frac{P(L - x)y}{I}; \quad \sigma_{yy}(x, y) = 0, \quad \sigma_{xy}(x, y) = -\frac{P}{2I} \left(\frac{D^2}{4} - y^2 \right) \quad (88)$$

In the computations, material properties are taken as $E = 3.0 \times 10^7$, $\nu = 0.3$ and the beam dimensions are $D = 6$ and $L = 48$. The shear force is $P = 1000$. In order to model the clamping condition, the displacement defined by Equation (87) is prescribed as essential boundary conditions at $x = 0, -D/2 \leq y \leq D/2$. This problem is solved with bilinear Lagrange elements and high order B-splines elements. The former helps to verify the implementation in addition to the ease of enforcement of Dirichlet boundary conditions (BCs). For the latter, care must be taken in enforcing the Dirichlet BCs given in Equation (87) since the B-splines are not interpolatory.

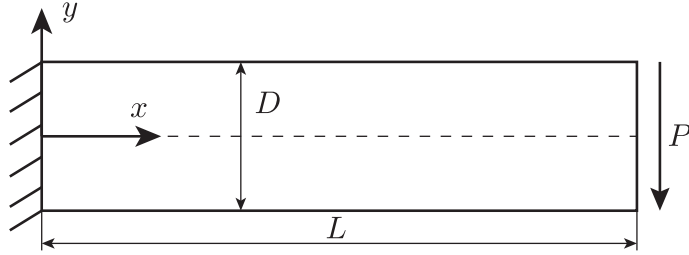


Figure 12: Timoshenko beam.

The mixed continuum-beam model is given in Fig. 13. The end shear force given in Equation (86) is now written as (for it is applied to a point)

$$F = \int_{-D/2}^{D/2} t_y(y) dy = - \int_{-D/2}^{D/2} \frac{P}{2I} \left(\frac{D^2}{4} - y^2 \right) dy = -\frac{PD^3}{12I} \quad (89)$$

Lagrange elements In the first calculation we take $l_c = 12$ and a mesh of 40×10 Q4 elements (40 elements in the length direction) was used for the continuum part and 29 two-noded elements for the beam part. Fig. 14 plots the transverse displacement (taken as nodal values) along the beam length at $y = 0$ together with the exact solution given

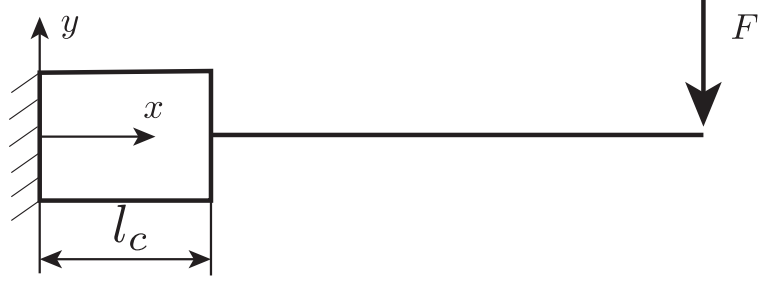


Figure 13: Timoshenko beam: mixed continuum-beam model.

in Equation (87). An excellent agreement with the exact solution can be observed.

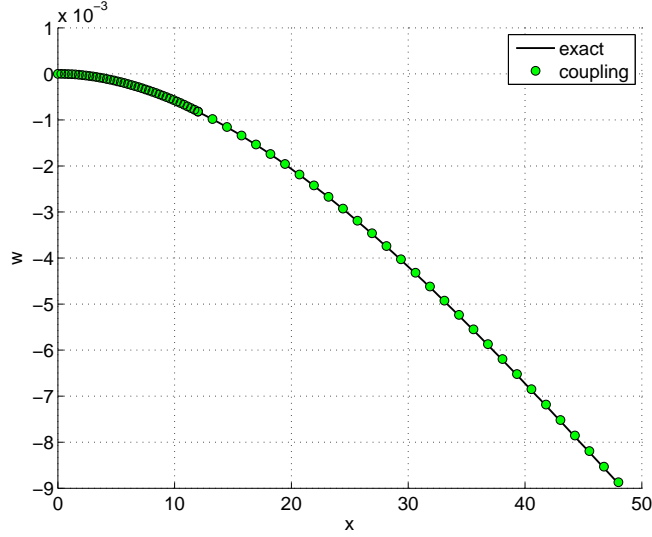


Figure 14: Mixed dimensional analysis of the Timoshenko beam: comparison of numerical transverse displacements and exact solution.

B-splines elements are used to discretise the continuum part (with bi-variate B-splines elements) and the beam part (with uni-variate B-splines elements).

6.1.2. Timoshenko beam: non-conforming coupling

6.1.3. Frame analysis

In order to demonstrate the correctness of the solid-beam coupling in which the beam local coordinate system is not identical to the global one, we perform a plane frame analysis as shown in Fig. 17. Due to symmetry, only half model is analysed with appropriate symmetric boundary conditions. We solve this model with (1) solid elements (four-noded quadrilateral elements) and (2) solid-beam model (cf. Fig. 18). The beam part are discretised using two-noded frame

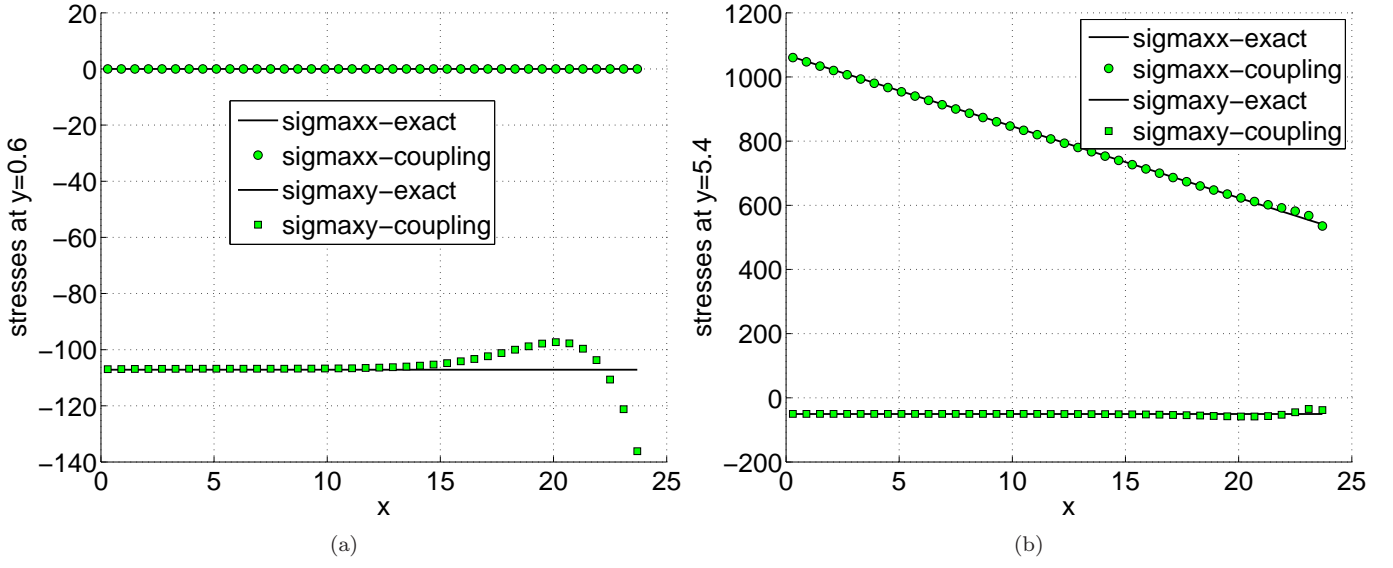


Figure 15: Cantilever beam subjects to an end shear force

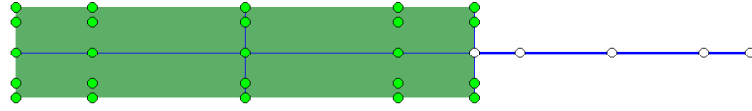


Figure 16: Mixed dimensional analysis of the Timoshenko beam: discretisation with B-splines elements. The continuum part is meshed by 2×2 cubic B-splines and the beam part is with 2 cubic elements.

elements with three degrees of freedom per node. The stabilisation parameter is taken to be $\alpha = 10^7$ and used for both coupling interfaces. A comparison of σ_{xy} contour plot obtained with (1) and (2) is given in Fig. 19. A good agreement was obtained.

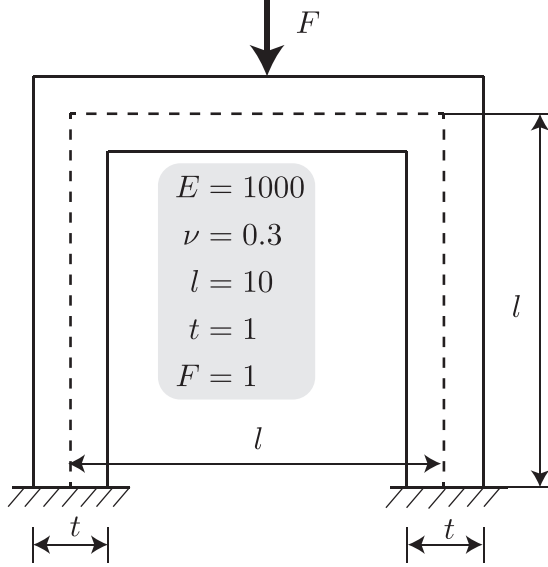


Figure 17: A plane frame analysis: problem description.

Remark 6.1. Although the processing time of the solid-beam model is much less than the one of the solid model, one cannot simply conclude that the solid-beam model is more efficient. The pre-processing of the solid-beam model, if not automatic, can be time consuming such that the gain in the processing step is lost. For non-linear analyses, where the processing time is dominant, we believe that mixed dimensional analysis is very economics.

6.2. Continuum-plate coupling

6.2.1. Cantilever plate: conforming coupling

For verification of the continuum-plate coupling, we consider the 3D cantilever beam given in Fig. 20. The material properties are $E = 1000 \text{ N/mm}^2$, $\nu = 0.3$. The end shear traction is $\bar{t} = 10 \text{ N/mm}$ in case of continuum-beam model and is $\bar{t} = 10/20 \text{ N/mm}^2$ in case of continuum model which is referred to as the reference model. We use B-splines elements to solve both the MDA and the reference model. A mesh of $64 \times 4 \times 5$ tri-cubic elements is utilized for the reference model and a mesh of $32 \times 4 \times 5 / 16 \times 2$ cubic elements is utilized for the mixed dimensional models, cf. Fig. 21. The plate part of the mixed dimensional model is discretised using the Reissner-Mindlin plate theory with three unknowns per node and the Kirchhoff plate theory with only one unknown per node. Fig. 22. Fig. 23.

6.2.2. Cantilever plate: non-conforming coupling

6.2.3. Non-conforming coupling of a square plate

We consider a square plate of dimension $L \times L \times t$ (t denotes the thickness) in which there is an overlapped solid of dimension $L_s \times L_s \times t$ as shown in Fig. 24. In the computations, material properties are taken as $E = 10^3$, $\nu = 0.3$ and the geometry data are $L = 400$, $t = 20$ and $L_s = 100$. The loading is a gravity force $p = 10$ and the plate boundary

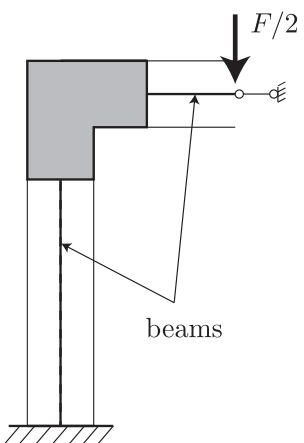


Figure 18: A plane frame analysis: solid-beam model.

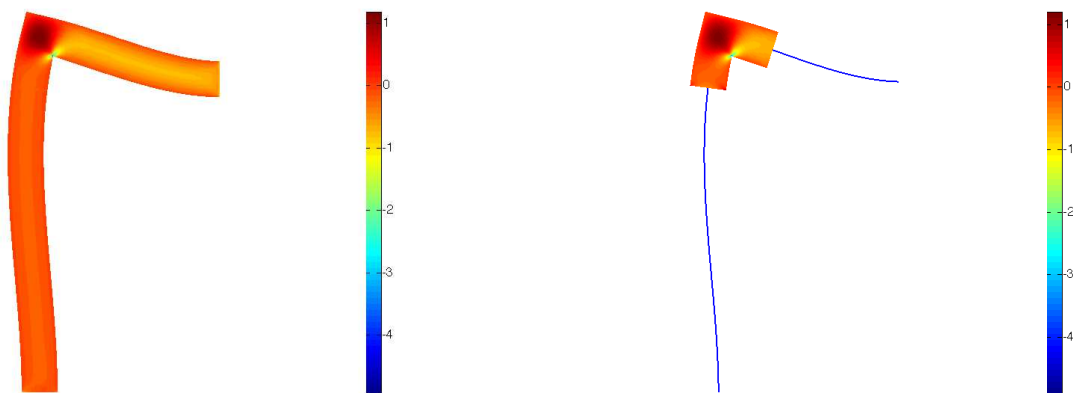


Figure 19: A plane frame analysis: comparison of σ_{xy} contour plot obtained with solid model (left) and solid-beam model (right).

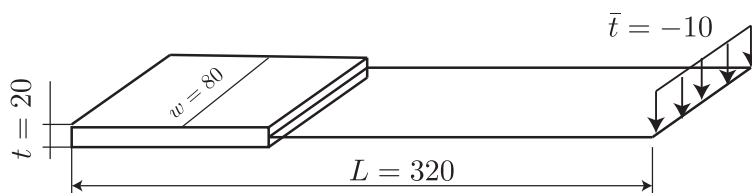


Figure 20: Cantilever beam subjects to an end shear force.

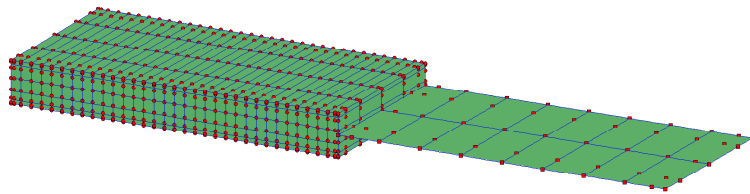


Figure 21: Cantilever beam subjects to an end shear force.

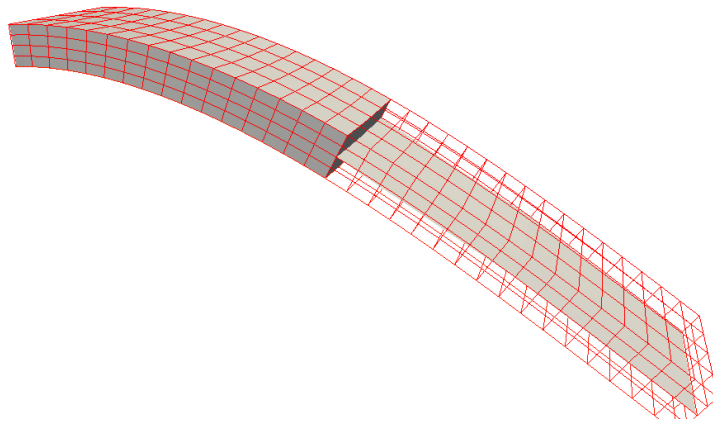
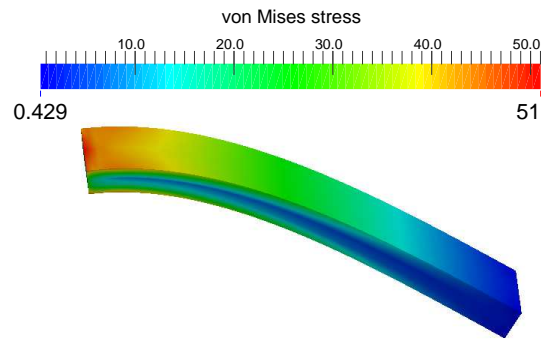
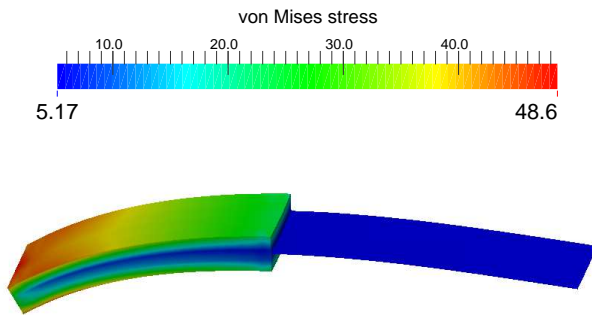


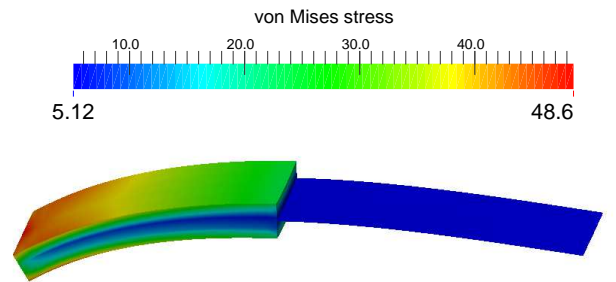
Figure 22: Cantilever beam subjects to an end shear force.



(a) reference model



(b) mixed dimensional model, Mindlin plate



(c) mixed dimensional model, Kirchhoff plate

Figure 23: Cantilever beam subjects to an end shear force

is fully clamped. We use rotation free Kirchhoff NURBS plate elements for the plate and NURBS solid elements for the solid. In order to model zero rotations in a rotation free NURBS plate formulation, we simply fix the transverse displacement of control points on the boundary and those right next to them cf. [40].

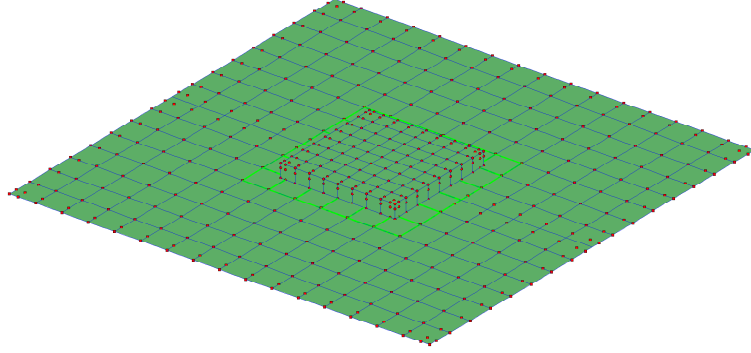


Figure 24: Square plate enriched by a solid. The highlighted elements are those plate elements cut by the solid boundaries.

In order to find plate elements cut by the boundary surfaces of the solid, we use the level sets defined for the square which is the intersection plane of the solid and the plate. The use of level sets to define the interaction of finite elements with some geometry entities is popular in XFEM, see e.g., [50]. Fig. 25 plots the deformed configuration of the solid-plate model and the one obtained with a plate model. In order to show the flexibility of the non-conforming coupling, the solid part was moved slightly to the right and the deformed configuration is given in Fig. 26. The same discretisation for the plate is used.

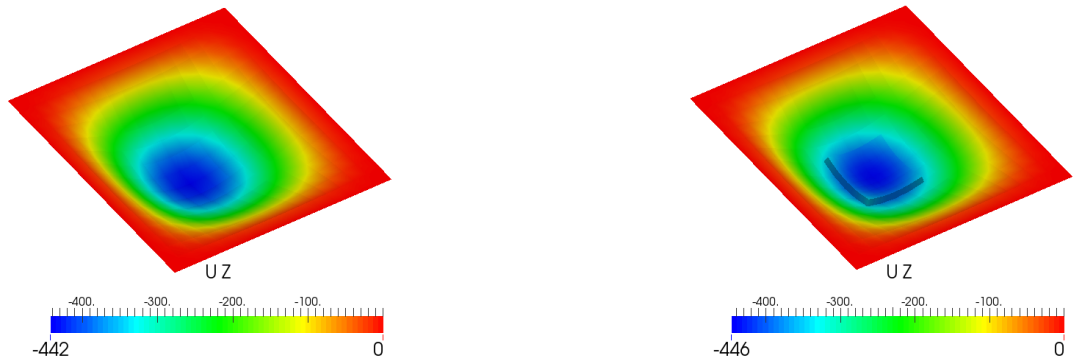


Figure 25: Square plate enriched by a solid: plate model (left) and solid-plate model (right).

7. Conclusions

We presented a Nitsche's method to couple (1) two dimensional continua and beams and (2) three dimensional continua and plates. A unified implementation of those coupling methods was given. Numerical examples using low

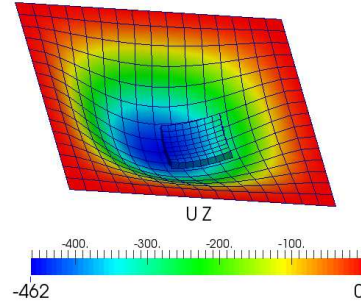


Figure 26: Square plate enriched by a solid:.

order Lagrange finite elements and high order NURBS isogeometric finite elements were provided. The first application is to glue non-compatible NURBS patches in isogeometric analysis. The second application was in the context of mixed dimensional analysis.

What have not been addressed in this manuscript are (1) dynamics problems (2) finite deformation problems (3) continua and shell coupling and (4) error estimation.

Acknowledgements

The authors would like to acknowledge the partial financial support of the Framework Programme 7 Initial Training Network Funding under grant number 289361 “Integrating Numerical Simulation and Geometric Design Technology”. Stéphane Bordas also thanks partial funding for his time provided by 1) the EPSRC under grant EP/G042705/1 Increased Reliability for Industrially Relevant Automatic Crack Growth Simulation with the eXtended Finite Element Method and 2) the European Research Council Starting Independent Research Grant (ERC Stg grant agreement No. 279578) entitled “Towards real time multiscale simulation of cutting in non-linear materials with applications to surgical simulation and computer guided surgery”. The authors would like to express the gratitude towards Drs. Erik Jan Lingen and Martijn Stroeve at the Dynaflo Research Group, Houtsingel 95, 2719 EB Zoetermeer, The Netherlands for providing us the numerical toolkit jem/jive.

References

- [1] J. Nitsche. Über ein variationsprinzip zur losung von dirichlet-problemen bei verwendung von teilraumen, die keinen randbedingungen unterworfen sind. *Abhandlungen aus dem Mathematischen Seminar der Universitat Hamburg*, 36:9–15, 1971.
- [2] A. Hansbo and P. Hansbo. An unfitted finite element method, based on Nitsche’s method, for elliptic interface problems. *Computer Methods in Applied Mechanics and Engineering*, 191(4748):5537 – 5552, 2002.
- [3] J. Dolbow and I. Harari. An efficient finite element method for embedded interface problems. *International Journal for Numerical Methods in Engineering*, (78):229–252, 2009.

- [4] R. Becker, P. Hansbo, and R. Stenberg. A finite element method for domain decomposition with non-matching grids. *ESAIM: Mathematical Modelling and Numerical Analysis*, 37:209–225, 2 2003.
- [5] A. Hansbo, P. Hansbo, and M. G. Larson. A finite element method on composite grids based on Nitsche’s method. *ESAIM: Mathematical Modelling and Numerical Analysis*, 37:495–514, 4 2003.
- [6] J. Sanders and M. A. Puso. An embedded mesh method for treating overlapping finite element meshes. *International Journal for Numerical Methods in Engineering*, (91):289–305, 2012.
- [7] J. D. Sanders, T. Laursen, and M.A. Puso. A Nitsche embedded mesh method. *Computational Mechanics*, 49(2):243–257, 2011.
- [8] S. Fernández-Méndez and A. Huerta. Imposing essential boundary conditions in mesh-free methods. *Computer Methods in Applied Mechanics and Engineering*, 193(1214):1257 – 1275, 2004.
- [9] M. Ruess, D. Schillinger, Y. Bazilevs, V. Varduhn, and E. Rank. Weakly enforced essential boundary conditions for NURBS-embedded and trimmed NURBS geometries on the basis of the finite cell method. *International Journal for Numerical Methods in Engineering*, *Accepted for publication*, 2013.
- [10] J. Baiges, R. Codina, F. Henke, S. Shahmiri, and W. A. Wall. A symmetric method for weakly imposing Dirichlet boundary conditions in embedded finite element meshes. *International Journal for Numerical Methods in Engineering*, 90(5):636–658, 2012.
- [11] A. Embar, J. Dolbow, and I. Harari. Imposing Dirichlet boundary conditions with Nitsche’s method and spline-based finite elements. *International Journal for Numerical Methods in Engineering*, 83(7):877–898, 2010.
- [12] Y. Bazilevs and T.J.R. Hughes. Weak imposition of Dirichlet boundary conditions in fluid mechanics. *Computers & Fluids*, 36(1):12 – 26, 2007.
- [13] P. Wriggers and G. Zavarise. A formulation for frictionless contact problems using a weak form introduced by Nitsche. *Computational Mechanics*, 41(3):407–420, 2008.
- [14] J. D. Sanders, J. E. Dolbow, and T. A. Laursen. On methods for stabilizing constraints over enriched interfaces in elasticity. *International Journal for Numerical Methods in Engineering*, 78:1009–1036, 2009.
- [15] V. P. Nguyen and H. Nguyen-Xuan. High-order B-splines based finite elements for delamination analysis of laminated composites. *Composite Structures*, 102:261–275, 2013.
- [16] V. P. Nguyen, P. Kerfriden, and S. Bordas. Isogeometric cohesive elements for two and three dimensional composite delamination analysis. *Composites Science and Technology*, 2013. <http://arxiv.org/abs/1305.2738>.
- [17] V. P. Nguyen, P. Kerfriden, S.P.A. Bordas, and T. Rabczuk. An integrated design-analysis framework for three dimensional composite panels. *Computer Aided Design*, 2013. submitted.
- [18] T.J.R. Hughes, J.A. Cottrell, and Y. Bazilevs. Isogeometric analysis: CAD, finite elements, NURBS, exact geometry and mesh refinement. *Computer Methods in Applied Mechanics and Engineering*, 194(39-41):4135–4195, 2005.
- [19] J. A. Cottrell, T. J.R. Hughes, and Y. Bazilevs. *Isogeometric Analysis: Toward Integration of CAD and FEA*. Wiley, 2009.

- [20] J.-C. Cuillère, S. Bournival, and V. François. A mesh-geometry-based solution to mixed-dimensional coupling. *Computer-Aided Design*, 42(6):509–522, June 2010.
- [21] PA Guidault and T Belytschko. On the L2 and the H1 couplings for an overlapping domain decomposition method using Lagrange multipliers. *International Journal for Numerical Methods in Engineering*, (October 2006):322–350, 2007.
- [22] H. B. Dhia and G. Rateau. The Arlequin method as a flexible engineering design tool. *International Journal for Numerical Methods in Engineering*, 62(11):1442–1462, 2005.
- [23] H. Qiao, Q.D. Yang, W.Q. Chen, and C.Z. Zhang. Implementation of the Arlequin method into ABAQUS: Basic formulations and applications. *Advances in Engineering Software*, 42(4):197–207, April 2011.
- [24] P. T. Bauman, H. B. Dhia, N. Elkhodja, J. T. Oden, and S. Prudhomme. On the application of the Arlequin method to the coupling of particle and continuum models. *Computational Mechanics*, 42(4):511–530, 2008.
- [25] S. Pfaller, G. Possart, P. Steinmann, M. Rahimi, F. Müller-Plathe, and M. C. Böhm. A comparison of staggered solution schemes for coupled particle-continuum systems modeled with the Arlequin method. *Computational Mechanics*, 49(5):565–579, 2011.
- [26] C. Wellmann and P. Wriggers. A two-scale model of granular materials. *Computer Methods in Applied Mechanics and Engineering*, 205-208:46–58, 2012.
- [27] J. Rousseau, E. Frangin, P. Marin, and L. Daudeville. Multidomain finite and discrete elements method for impact analysis of a concrete structure. *Engineering Structures*, 31(11):2735–2743, 2009.
- [28] F.B. Belgacem. The mortar finite element method with lagrange multipliers. *Numerische Mathematik*, 84:173197, 1999.
- [29] J. Unger and S. Eckardt. Multiscale modeling of concrete. *Archives of Computational Methods in Engineering*, 18(3):341–393, 2011.
- [30] R. W. McCune, C. G. Armstrong, and D. J. Robinson. Mixed-dimensional coupling in finite element models. *International Journal for Numerical Methods in Engineering*, 49(6):725–750, 2000.
- [31] C. A. Felippa. Introduction to Finite Element Methods. Multifreedom constraints II (lecture notes). <http://www.colorado.edu/engineering/CAS/courses.d/IFEM.d/>, 2001.
- [32] C. A. Felippa. Introduction to Finite Element Methods. superelements and global-local analysis. <http://www.colorado.edu/engineering/CAS/courses.d/IFEM.d/>, 2001.
- [33] O. Allix, L. Gendre, P. Gosselet, and pages=125-133 Guguin, G. Non-intrusive coupling: An attempt to merge industrial and research software capabilities. In Dana Mueller-Hoeppe, Stefan Loehnert, and Stefanie Reese, editors, *Recent Developments and Innovative Applications in Computational Mechanics*. Springer Berlin Heidelberg, 2011.
- [34] C. Barthel and U. Gabbert. Coupling methods for a flexible adaptive finite element modeling. In *Proceedings of the ASME 2009 International Design Engineering Technical Conferences & Computers and Information in Engineering Conference IDETC/CIE 2009*, San Diego, California, USA, August 30-September 2 2009.

- [35] K. S. Surana. Transition finite elements for three-dimensional stress analysis. *International Journal for Numerical Methods in Engineering*, 15(7):991–1020, 1980.
- [36] Gmur T.C. and Kauten R.H. Three-dimensional solid-to-beam transition elements for structural dynamics analysis. *International Journal for Numerical Methods in Engineering*, 36:1429 – 1444, 1993.
- [37] J. Kiendl, Y. Bazilevs, M.-C. Hsu, R. Wüchner, and K.-U. Bletzinger. The bending strip method for isogeometric analysis of Kirchhoff-Love shell structures comprised of multiple patches. *Computer Methods in Applied Mechanics and Engineering*, 199(37-40):2403–2416, 2010.
- [38] S.B. Raknes, X. Deng, Y. Bazilevs, D.J. Benson, K.M. Mathisen, and T. Kvamsdal. Isogeometric rotation-free bending-stabilized cables: Statics, dynamics, bending strips and coupling with shells. *Computer Methods in Applied Mechanics and Engineering*, 263(0):127 – 143, 2013.
- [39] D. N. Arnold, F. Brezzi, B. Cockburn, and L. D. Marini. Unified analysis of discontinuous Galerkin methods for elliptic problems. *SIAM Journal of Numerical Analysis*, pages 1749–1779, 2001.
- [40] J. Kiendl, K.-U. Bletzinger, J. Linhard, and R. Wüchner. Isogeometric shell analysis with Kirchhoff-Love elements. *Computer Methods in Applied Mechanics and Engineering*, 198(49-52):3902–3914, 2009.
- [41] D.J. Benson, Y. Bazilevs, M.-C. Hsu, and T.J.R. Hughes. A large deformation, rotation-free, isogeometric shell. *Computer Methods in Applied Mechanics and Engineering*, 200(13-16):1367–1378, 2011.
- [42] T.J.R. Hughes. *The Finite Element Method: Linear Static and Dynamic Finite Element Analysis*. Dover Publications, Mineola, NY, 2000.
- [43] O.C. Zienkiewicz and R.L. Taylor. *The Finite Element Method for Solid and Structural Mechanics*. Butterworth-Heinemann, 6 edition, 2005.
- [44] M. Griebel and M. A. Schweitzer. A Particle-Partition of Unity Method - Part V: Boundary Conditions. In S. Hildebrandt and H. Karcher, editors, *Geometric Analysis and Nonlinear Partial Differential Equations*, pages 519–542. Springer Berlin, 2002.
- [45] L. A. Piegl and W. Tiller. *The NURBS Book*. Springer, 1996.
- [46] B. Nayroles, G. Touzot, and P. Villon. Generalizing the finite element method: Diffuse approximation and diffuse elements. *Computational Mechanics*, 10(5):307–318, 1992.
- [47] T. Belytschko, Y. Y. Lu, and L. Gu. Element-free galerkin methods. *International Journal for Numerical Methods in Engineering*, 37(2):229–256, 1994.
- [48] V. P. Nguyen, T. Rabczuk, S. Bordas, and M. Duflot. Meshless methods: A review and computer implementation aspects. *Mathematics and Computers in Simulation*, 79(3):763–813, 2008.
- [49] M. J. Borden, M. A. Scott, J. A. Evans, and T. J. R. Hughes. Isogeometric finite element data structures based on Bézier extraction of NURBS. *International Journal for Numerical Methods in Engineering*, 87(15):15–47, 2011.
- [50] N. Sukumar, D. L. Chopp, N. Moës, and T. Belytschko. Modelling holes and inclusions by level sets in the extended finite element method. *Computer Methods in Applied Mechanics and Engineering*, 190:6183–6200, 2000.
- [51] N. Moës, J. Dolbow, and T. Belytschko. A finite element method for crack growth without remeshing. *International Journal for Numerical Methods in Engineering*, 46(1):131–150, 1999.

- [52] A. Henderson. ParaView Guide, A Parallel Visualization Application, 2007. Kitware Inc.
- [53] T.J.R. Hughes, A. Reali, and G. Sangalli. Efficient quadrature for NURBS-based isogeometric analysis. *Computer Methods in Applied Mechanics and Engineering*, 199(5-8):301–313, 2010.
- [54] F. Auricchio, F. Calabro, T.J.R. Hughes, A. Reali, and G. Sangalli. A simple algorithm for obtaining nearly optimal quadrature rules for NURBS-based isogeometric analysis. *Computer Methods in Applied Mechanics and Engineering*, 249–252:15 – 27, 2012.
- [55] Ugural A.C. and Fenster S.K. *Advanced Strength and Applied Elasticity*. Prentice-Hall: Englewood Cliffs, NJ, 3rd edition, 1995.