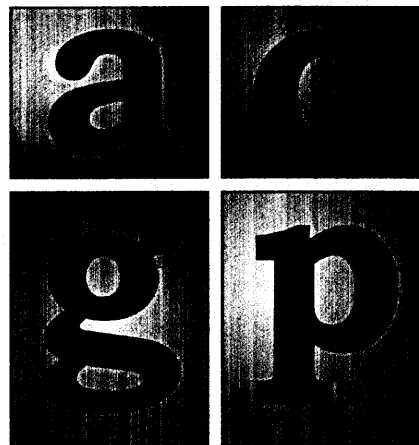


Proceedings of AGOP'2005

International Summer School
on Aggregation Operators
and their applications



JULY 10-15 2005

Lugano, Switzerland

TABLE OF CONTENTS

TUTORIALS	11
BINARY AGGREGATION OPERATORS WHICH ARE BOUNDED BY THE MINIMUM – A MATHEMATICAL OVERVIEW E. P. Klement	13
QUALITATIVE AGGREGATION AND BEYOND IN INFORMATION PROCESSING D. Dubois, H. Prade	17
REGULAR CONTRIBUTIONS	23
AGGREGATION OF FUZZY SET GRANULES S. Bodjanova	25
CONDITIONAL PREFERENCES IN QUERYING DATABASES G. Bordogna, G. Pasi	31
WEIGHTS IN MULTICRITERIA DECISION MAKING T. Calvo, J. Lazaro, D. Kyselová, R. Mesiar	37
ORDER-THEORETIC AND CATEGORICAL FOUNDATIONS OF AGGREGATION OPERATORS M. Demirci	41
LIMIT REFINEMENTS OF AGGREGATION BASED ORDERINGS ON CONTINUOUS SCALES D. Dubois, D. Kyselová, R. Mesiar	47
WHAT IS A SEMICOPULA? F. Durante	51
LUKASIEWICZ FILTERS AND SIMILARITIES M. Kalina	57
IDENTIFICATION OF CHOQUET INTEGRAL MODELS BY MEANS OF A MINIMUM VARIANCE PRINCIPLE I. Kojadinovic	61
AN EXTENSION OF THE SHANNON ENTROPY TO BI-CAPACITIES I. Kojadinovic, J.-L. Marichal	67
A COMPLETE DESCRIPTION OF COMPARISON MEANINGFUL FUNCTIONS J.-L. Marichal, R. Mesiar, T. Rückschlossová	73
QL-IMPLICATIONS VERSUS D-IMPLICATIONS M. Mas, M. Monserrat, J. Torrens	79
AGGREGATION OF COMPLEX QUANTITIES M. Mareš, R. Mesiar	85

AN EXTENSION OF THE SHANNON ENTROPY TO BI-CAPACITIES

Ivan Kojadinovic
LINA CNRS FRE 2729
Site école polytechnique de l'univ. de Nantes
Rue Christian Pauc
44306 Nantes, France
ivan.kojadinovic@univ-nantes.fr

Jean-Luc Marichal
Applied Mathematics Unit
Univ. of Luxembourg
162A, avenue de la Faïencerie
L-1511 Luxembourg, G.D. Luxembourg
jean-luc.marichal@uni.lu

Summary

The notion of Shannon entropy, recently generalized to capacities, is extended to bi-capacities and its main properties are studied.

Keywords: Multicriteria decision making, bi-capacity, Choquet integral, entropy.

1 INTRODUCTION

The well-known Shannon entropy [12] is a fundamental concept in probability theory and related fields. In a general non probabilistic setting, it is merely a measure of the uniformity (evenness) of a discrete probability distribution. In a probabilistic context, it can be naturally interpreted as a measure of unpredictability.

By relaxing the additivity property of probability measures, requiring only that they be monotone, one obtains Choquet capacities [1], also known as fuzzy measures [13], for which an extension of the Shannon entropy was recently defined [6, 7, 9, 10].

The concept of capacity can be further generalized. In the context of multicriteria decision making, *bi-capacities* have been recently introduced by Grabisch and Labreuche [4, 5] to model in a flexible way the preferences of a decision maker when the underlying scales are *bipolar*.

Since a bi-capacity can be regarded as a generalization of a capacity, the following natural question arises : how could one appraise the 'uniformity' or 'uncertainty' associated with a bi-capacity in the spirit of the Shannon entropy?

The main purpose of this paper is to propose a definition of an extension of the Shannon entropy to bi-capacities. The interpretation of this concept will be performed in the framework of multicriteria decision making based on the Choquet integral. Hence, we

consider a set $N := \{1, \dots, n\}$ of *criteria* and a set \mathcal{A} of *alternatives* described according to these criteria, i.e., real-valued functions on N . Then, given an alternative $x \in \mathcal{A}$, for any $i \in N$, $x_i := x(i)$ is regarded as the *utility* of x w.r.t. to criterion i . The utilities are further considered to be *commensurate* and to lie either on a unipolar or on a *bipolar* scale. Compared to a unipolar scale, a bipolar scale is characterized by the additional presence of a neutral value (usually 0) such that values above this neutral reference point are considered to be good by the decision maker, and values below it are considered to be bad. As in [4, 5], for simplicity reasons, we shall assume that the scale used for all utilities is $[0, 1]$ if the scale is unipolar, and $[-1, 1]$ with 0 as neutral value, if the scale is bipolar.

This paper is organized as follows. The second and third sections are devoted to a presentation of the notions of capacity, bi-capacity and Choquet integral in the framework of multicriteria decision making. In the last section, after recalling the definitions of the probabilistic Shannon entropy and of its extension to capacities, we propose a generalization of it to bi-capacities. We also give an interpretation of it in the context of multicriteria decision making and we study its main properties.

2 CAPACITIES AND BI-CAPACITIES

In the context of aggregation, capacities [1] and bi-capacities [4, 5] can be regarded as generalizations of weighting vectors involved in the calculations of weighted arithmetic means.

Let $\mathcal{P}(N)$ denote the power set of N and let $\mathcal{Q}(N) := \{(A, B) \in \mathcal{P}(N) \times \mathcal{P}(N) \mid A \cap B = \emptyset\}$.

Definition 2.1 A function $\mu : \mathcal{P}(N) \rightarrow [0, 1]$ is a *capacity* if it satisfies :

$$(i) \mu(\emptyset) = 0, \mu(N) = 1,$$

(ii) for any $S, T \subseteq N$, $S \subseteq T \Rightarrow \mu(S) \leq \mu(T)$.

A capacity μ on N is said to be *additive* if $\mu(S \cup T) = \mu(S) + \mu(T)$ for all disjoint subsets $S, T \subseteq N$. A particular case of additive capacity is the *uniform* capacity on N . It is defined by

$$\mu^*(T) = |T|/n, \quad \forall T \subseteq N.$$

The *dual* (or *conjugate*) of a capacity μ on N is a capacity $\bar{\mu}$ on N defined by $\bar{\mu}(A) = \mu(N) - \mu(N \setminus A)$, for all $A \subseteq N$.

Definition 2.2 A function $v : \mathcal{Q}(N) \rightarrow \mathbb{R}$ is a *bi-capacity* if it satisfies :

- (i) $v(\emptyset, \emptyset) = 0$, $v(N, \emptyset) = 1$, $v(\emptyset, N) = -1$,
- (ii) $A \subseteq B$ implies $v(A, \cdot) \leq v(B, \cdot)$ and $v(\cdot, A) \geq v(\cdot, B)$.

Furthermore, a bi-capacity v is said to be :

- of the *Cumulative Prospect Theory (CPT) type* [4, 5, 14] if there exist two capacities μ_1, μ_2 such that

$$v(A, B) = \mu_1(A) - \mu_2(B), \quad \forall (A, B) \in \mathcal{Q}(N).$$

When $\mu_1 = \mu_2$ the bi-capacity is further said to be *symmetric*, and *asymmetric* when $\mu_2 = \bar{\mu}_1$

- *additive* if it is of the CPT type with μ_1, μ_2 additive, i.e. for any $(A, B) \in \mathcal{Q}(N)$

$$v(A, B) = \sum_{i \in A} \mu_1(i) - \sum_{i \in B} \mu_2(i).$$

Note that an additive bi-capacity with $\mu_1 = \mu_2$ is both symmetric and asymmetric since $\bar{\mu}_1 = \mu_1$.

As we continue, to indicate that a CPT type bi-capacity v is constructed from two capacities μ_1, μ_2 , we shall denote it by v_{μ_1, μ_2}

Let us also consider a particular additive bi-capacity on N : the *uniform* bi-capacity. It is defined by

$$v^*(A, B) = \frac{|A| - |B|}{n}, \quad \forall (A, B) \in \mathcal{Q}(N).$$

3 THE CHOQUET INTEGRAL

When utilities are considered to lie on a unipolar scale, the importance of the subsets of (interacting) criteria can be modeled by a capacity. A suitable aggregation operator that generalizes the weighted arithmetic mean is then the Choquet integral [8].

Definition 3.1 The Choquet integral of a function $x : N \rightarrow \mathbb{R}^+$ represented by the profile (x_1, \dots, x_n) w.r.t a capacity μ on N is defined by

$$C_\mu(x) := \sum_{i=1}^n x_{\sigma(i)} [\mu(A_{\sigma(i)}) - \mu(A_{\sigma(i+1)})],$$

where σ is a permutation on N such that $x_{\sigma(1)} \leq \dots \leq x_{\sigma(n)}$, $A_{\sigma(i)} := \{\sigma(i), \dots, \sigma(n)\}$, for all $i \in \{1, \dots, n\}$, and $A_{\sigma(n+1)} := \emptyset$.

When the underlying utility scale is bipolar, Grabisch and Labreuche proposed to substitute a bi-capacity to the capacity and proposed a natural generalization of the Choquet integral [5].

Definition 3.2 The Choquet integral of a function $x : N \rightarrow \mathbb{R}$ represented by the profile (x_1, \dots, x_n) w.r.t a bi-capacity v on N is defined by

$$C_v(x) := C_{\nu_{N^+}^v}(|x|)$$

where $\nu_{N^+}^v$ is a game on N (i.e. a set function on N vanishing at the empty set) defined by

$$\nu_{N^+}^v(C) = v(C \cap N^+, C \cap N^-), \quad \forall C \subseteq N,$$

and $N^+ := \{i \in N | x_i \geq 0\}$, $N^- := N \setminus N^+$.

As shown in [5], an equivalent expression of $C_v(x)$ is :

$$C_v(x) = \sum_{i \in N} |x_{\sigma(i)}| [v(A_{\sigma(i)} \cap N^+, A_{\sigma(i)} \cap N^-) - v(A_{\sigma(i+1)} \cap N^+, A_{\sigma(i+1)} \cap N^-)], \quad (1)$$

where $A_{\sigma(i)} := \{\sigma(i), \dots, \sigma(n)\}$, $A_{\sigma(n+1)} := \emptyset$, and σ is a permutation on N so that $|x_{\sigma(1)}| \leq \dots \leq |x_{\sigma(n)}|$.

4 ENTROPY OF A BI-CAPACITY

4.1 THE CONCEPT OF PROBABILISTIC ENTROPY

The fundamental concept of *entropy of a probability distribution* was initially proposed by Shannon [11, 12]. The Shannon entropy of a probability distribution p defined on a nonempty finite set $N := \{1, \dots, n\}$ is defined by

$$H_S(p) := \sum_{i \in N} h[p(i)]$$

where

$$h(x) := \begin{cases} -x \ln x, & \text{if } x > 0, \\ 0, & \text{if } x = 0, \end{cases}$$

The quantity $H_S(p)$ is always non negative and zero if and only if p is a Dirac mass (*decisivity* property). As

a function of p , H_S is strictly concave. Furthermore, it reaches its maximum value ($\ln n$) if and only if p is uniform (*maximality* property).

In a general non probabilistic setting, $H_S(p)$ is nothing else than a measure of the uniformity of p . In a probabilistic context, it can be interpreted as a measure of the *information* contained in p .

4.2 EXTENSION TO CAPACITIES

Let μ be a capacity on N . The following entropy was proposed by Marichal [7, 9] (see also [10]) as an extension of the Shannon entropy to capacities :

$$H_M(\mu) := \sum_{i \in N} \sum_{S \subseteq N \setminus i} \gamma_s(n) h[\mu(S \cup i) - \mu(S)],$$

where

$$\gamma_s(n) := \frac{(n-s-1)! s!}{n!} \quad \forall s \in \{0, 1, \dots, n-1\}.$$

Regarded as a uniformity measure, H_M has been recently axiomatized by means of three axioms [6] : the symmetry property, a boundary condition for which H_M reduces to the Shannon entropy, and a generalized version of the well-known recursivity property.

A fundamental property of H_M is that it can be rewritten in terms of the maximal chains of the Hasse diagram of (N, \subseteq) [6], which is equivalent to :

$$H_M(\mu) = \frac{1}{n!} \sum_{\sigma \in \Pi_N} H_S(p_\sigma^\mu), \quad (2)$$

where Π_N denotes the set of permutations on N and, for any $\sigma \in \Pi_N$,

$$p_\sigma^\mu(i) := \mu(\{\sigma(i), \dots, \sigma(n)\}) - \mu(\{\sigma(i+1), \dots, \sigma(n)\}), \quad \forall i \in N.$$

The quantity $H_M(\mu)$ can therefore simply be seen as an average over Π_N of the uniformity values of the probability distributions p_σ^μ calculated by means of the Shannon entropy. As shown in [6], in the context of aggregation by a Choquet integral w.r.t a capacity μ on N , $H_M(\mu)$ can be interpreted as a measure of the average value over all $x \in [0, 1]^n$ of the degree to which the arguments x_1, \dots, x_n contribute to the calculation of the aggregated value $C_\mu(x)$.

To stress on the fact that H_M is an average of Shannon entropies, we shall equivalently denote it by \bar{H}_S as we go on.

It has also been shown that $H_M = \bar{H}_S$ satisfies many properties that one would intuitively require from an entropy measure [6, 9]. The most important ones are :

1. **Boundary property for additive measures.** For any additive capacity μ on N , we have

$$\bar{H}_S(\mu) = H_S(p),$$

where p is the probability distribution on N defined by $p(i) = \mu(i)$ for all $i \in N$.

2. **Boundary property for cardinality-based measures.** For any cardinality-based capacity μ on N (i.e. such that, for any $T \subseteq N$, $\mu(T)$ depends only on $|T|$), we have

$$\bar{H}_S(\mu) = H_S(p^\mu),$$

where p^μ is the probability distribution on N defined by $p^\mu(i) = \mu(\{1, \dots, i\}) - \mu(\{1, \dots, i-1\})$ for all $i \in N$.

3. **Decisivity.** For any capacity μ on N ,

$$\bar{H}_S(\mu) \geq 0.$$

Moreover, $\bar{H}_S(\mu) = 0$ if and only if μ is a binary-valued capacity, that is, such that $\mu(T) \in \{0, 1\}$ for all $T \subseteq N$.

4. **Maximality.** For any capacity μ on N , we have

$$\bar{H}_S(\mu) \leq \ln n.$$

with equality if and only if μ is the uniform capacity μ^* on N .

5. **Increasing monotonicity toward μ^* .** Let μ be a capacity on N such that $\mu \neq \mu^*$ and, for any $\lambda \in [0, 1]$, define the capacity μ_λ on N as $\mu_\lambda := \mu + \lambda(\mu^* - \mu)$. Then for any $0 \leq \lambda_1 < \lambda_2 \leq 1$ we have

$$\bar{H}_S(\mu_{\lambda_1}) < \bar{H}_S(\mu_{\lambda_2}).$$

6. **Strict concavity.** For any two capacities μ_1, μ_2 on N and any $\lambda \in]0, 1[$, we have

$$\bar{H}_S(\lambda \mu_1 + (1 - \lambda) \mu_2) > \lambda \bar{H}_S(\mu_1) + (1 - \lambda) \bar{H}_S(\mu_2).$$

4.3 GENERALIZATION TO BI-CAPACITIES

For any bi-capacity v on N and any $N^+ \subseteq N$, as in [5], we define the game $\nu_{N^+}^v$ on N by

$$\nu_{N^+}^v(C) := v(C \cap N^+, C \cap N^-), \quad \forall C \subseteq N,$$

where $N^- := N \setminus N^+$.

Furthermore, for any $N^+ \subseteq N$, let p_{σ, N^+}^v be the probability distribution on N defined, for any $i \in N$, by

$$p_{\sigma, N^+}^v(i) := \frac{|\nu_{N^+}^v(A_{\sigma(i)}) - \nu_{N^+}^v(A_{\sigma(i+1)})|}{\sum_{j \in N} |\nu_{N^+}^v(A_{\sigma(j)}) - \nu_{N^+}^v(A_{\sigma(j+1)})|} \quad (3)$$

where $A_{\sigma(i)} := \{\sigma(i), \dots, \sigma(n)\}$, for all $i \in N$, and $A_{\sigma(n+1)} := \emptyset$

We then propose the following simple definition of the extension of the Shannon entropy to a bi-capacity v on N :

$$\overline{H}_S(v) := \frac{1}{2^n} \sum_{N^+ \subseteq N} \frac{1}{n!} \sum_{\sigma \in \Pi_N} H_S(p_{\sigma, N^+}^v) \quad (4)$$

As in the case of capacities, the extended Shannon entropy $\overline{H}_S(v)$ is nothing else than an average of the uniformity values of the probability distributions p_{σ, N^+}^v calculated by means of H_S .

In the context of aggregation by a Choquet integral w.r.t a bi-capacity v on N , let us show that, as previously, $\overline{H}_S(v)$ can be interpreted as a measure of the average value over all $x \in [-1, 1]^n$ of the degree to which the arguments x_1, \dots, x_n contribute to the calculation of the aggregated value $C_v(x)$.

In order to do so, consider an alternative $x \in [-1, 1]^n$ and denote by $N^+ \subseteq N$ the subset of criteria for which $x \geq 0$. Then, from Eq. (1), we see that the Choquet integral of x w.r.t v is simply a weighted sum of $|x_{\sigma(1)}|, \dots, |x_{\sigma(n)}|$, where each $|x_{\sigma(i)}|$ is weighted by

$$\nu_{N^+}^v(A_{\sigma(i)}) - \nu_{N^+}^v(A_{\sigma(i+1)}).$$

Clearly, these weights are not always positive, nor do they sum up to one. From the monotonicity conditions of a bi-capacity, it follows that the weight corresponding to $|x_{\sigma(i)}|$ is positive if and only if $\sigma(i) \in N^+$.

Depending on the evenness of the distribution of the absolute values of the weights, the utilities x_1, \dots, x_n will contribute more or less evenly in the calculation of $C_v(x)$.

A straightforward way to measure the evenness of the contribution of x_1, \dots, x_n to $C_v(x)$ consists in measuring the uniformity of the probability distribution p_{σ, N^+}^v defined by Eq. (3). Note that p_{σ, N^+}^v is simply obtained by normalizing the distribution of the absolute values of the weights involved in the calculation of $C_v(x)$.

Clearly, the uniformity of p_{σ, N^+}^v can be measured by the Shannon entropy. Should $H_S(p_{\sigma, N^+}^v)$ be close to $\ln n$, the distribution p_{σ, N^+}^v will be approximately uniform and all the partial evaluations x_1, \dots, x_n will be involved almost equally in the calculation of $C_v(x)$. On the contrary, should $H_S(p_{\sigma, N^+}^v)$ be close to zero, one $p_{\sigma, N^+}^v(i)$ will be very close to one and $C_v(x)$ will be almost proportional to the corresponding partial evaluation.

Let us now go back to the definition of the extended Shannon entropy. From Eq. (4), we clearly see that

$\overline{H}_S(v)$ is nothing else than a measure of the average of the behavior we have just discussed, i.e. taking into account all the possibilities for σ and N^+ with uniform probability. More formally, for any $N^+ \subseteq N$, and any $\sigma \in \Pi_N$, define the set

$$\mathcal{O}_{\sigma, N^+} := \{x \in [-1, 1]^n \mid \forall i \in N^+, x_i \in [0, 1], \\ \forall i \in N^-, x_i \in [-1, 0], |x_{\sigma(1)}| \leq \dots \leq |x_{\sigma(n)}|\}.$$

We clearly have $\bigcup_{N^+ \subseteq N} \bigcup_{\sigma \in \Pi_N} \mathcal{O}_{\sigma, N^+} = [-1, 1]^n$.

Let $x \in [-1, 1]^n$ be fixed. Then there exist $N^+ \subseteq N$ and $\sigma \in \Pi_N$ such that $x \in \mathcal{O}_{\sigma, N^+}$ and hence $C_v(x)$ is proportional to $\sum_{i \in N} x_{\sigma(i)} p_{\sigma, N^+}^v(i)$.

Starting from Eq. (4) and using the fact that $\int_{x \in \mathcal{O}_{\sigma, N^+}} dx = 1/n!$, the entropy $\overline{H}_S(v)$ can be rewritten as

$$H_M(\mu) = \frac{1}{2^n} \sum_{N^+ \subseteq N} \sum_{\sigma \in \Pi_N} \int_{x \in \mathcal{O}_{\sigma, N^+}} H_S(p_{\sigma, N^+}^v) dx \\ = \frac{1}{2^n} \int_{[-1, 1]^n} H_S(p_{\sigma_x, N_x^+}^v) dx,$$

where $N_x^+ \subseteq N$ and $\sigma_x \in \Pi_N$ are defined such that $x \in \mathcal{O}_{\sigma_x, N_x^+}$.

We thus observe that $\overline{H}_S(v)$ measures the average value over all $x \in [-1, 1]^n$ of the degree to which the arguments x_1, \dots, x_n contribute to the calculation of $C_v(x)$. In probabilistic terms, it corresponds to the expectation over all $x \in [-1, 1]^n$, with uniform distribution, of the degree of contribution of arguments x_1, \dots, x_n in the calculation of $C_v(x)$.

4.4 PROPERTIES OF \overline{H}_S

We first present two lemmas giving the form of the probability distributions p_{σ, N^+}^v for CPT type bi-capacities.

Lemma 4.1 *For any CPT type bi-capacity v_{μ_1, μ_2} on N , any $N^+ \subseteq N$, any $\sigma \in \Pi_N$, and any $i \in N$ we have*

$$p_{\sigma, N^+}^{v_{\mu_1, \mu_2}}(i) = \frac{1}{\mu_1(N^+) + \mu_2(N^-)} \\ \times [\mu_1(A_{\sigma(i)} \cap N^+) - \mu_1(A_{\sigma(i+1)} \cap N^+) \\ + \mu_2(A_{\sigma(i)} \cap N^-) - \mu_2(A_{\sigma(i+1)} \cap N^-)].$$

Lemma 4.2 *For any asymmetric bi-capacity $v_{\mu, \bar{\mu}}$ on N , any $N^+ \subseteq N$, and any $\sigma \in \Pi_N$, we have*

$$p_{\sigma, N^+}^{v_{\mu, \bar{\mu}}}(i) = \mu(\{\sigma(i), \dots, \sigma(n)\} \cap N^+) \\ - \mu(\{\sigma(i+1), \dots, \sigma(n)\} \cap N^+) + \mu(\{\sigma(1), \dots, \sigma(i)\} \cup N^+) \\ - \mu(\{\sigma(1), \dots, \sigma(i-1)\} \cup N^+), \quad \forall i \in N.$$

4.4.1 Boundary conditions

We now give the form of \overline{H}_S for asymmetric bicapacities.

Property 4.1 For any asymmetric bi-capacity $v_{\mu, \bar{\mu}}$ on N , we have

$$\overline{H}_S(v_{\mu, \bar{\mu}}) = \overline{H}_S(\mu).$$

Note that the above property is completely in accordance with the fact the Choquet integral w.r.t a general bi-capacity is a generalization of the asymmetric Choquet integral [2, 3].

The following proposition gives the form of \overline{H}_S for additive bi-capacities.

Property 4.2 For any additive bi-capacity v_{μ_1, μ_2} on N , we have

$$\overline{H}_S(v_{\mu_1, \mu_2}) = \frac{1}{2^n} \sum_{N^+ \subseteq N} \sum_{i \in N} h \left[\frac{\mu_1(i \cap N^+) + \mu_2(i \cap N^-)}{\sum_{j \in N^+} \mu_1(j) + \sum_{j \in N^-} \mu_2(j)} \right]$$

We end this subsection by a natural result giving the form of \overline{H}_S for additive asymmetric/symmetric bi-capacities.

Property 4.3 For any additive asymmetric/symmetric bi-capacity $v_{\mu, \mu}$ on N , we have

$$\overline{H}_S(v_{\mu, \mu}) = H_S(p),$$

where p is the probability distribution on N defined by $p(i) := \mu(i)$ for all $i \in N$.

4.4.2 Symmetry

Property 4.4 For any bi-capacity v on N , and any permutation π on N , we have

$$\overline{H}_S(v \circ \pi^{-1}) = \overline{H}_S(v).$$

4.4.3 Expansibility

An element $k \in N$ is *null* for a bi-capacity v on N if $v(A \cup k, B) = v(A, B)$ for all $B \subseteq N \setminus k$, all $A \subseteq N \setminus (B \cup k)$, and $v(A, B \cup k) = v(A, B)$ for all $A \subseteq N \setminus k$, all $B \subseteq N \setminus (A \cup k)$.

Property 4.5 Let v be a bi-capacity on N . If $k \in N$ is a null element for v , then

$$\overline{H}_S(v) = \overline{H}_S(v_{-k}),$$

where v_{-k} denotes the restriction of v to $N \setminus k$.

4.4.4 Decisivity

Property 4.6 For any bi-capacity v on N ,

$$\overline{H}_S(v) \geq 0.$$

Moreover, $\overline{H}_S(v) = 0$ if and only, for any $x \in [-1, 1]^n$, there exists $\lambda \in \mathbb{R}^+$ and $i \in N$ such that $C_v(x) = \lambda x_i$.

4.4.5 Maximality

Property 4.7 For any bi-capacity v on N , we have

$$\overline{H}_S(v) \leq \ln n.$$

with equality if and only if v is the uniform capacity v^* on N .

4.4.6 Increasing monotonicity toward v^*

Property 4.8 Let v be a bi-capacity on N such that $v \neq v^*$ and, for any $\lambda \in [0, 1]$, define the bi-capacity v_λ on N as $v_\lambda := v + \lambda(v^* - v)$. Then for any $0 \leq \lambda_1 < \lambda_2 \leq 1$ we have

$$\overline{H}_S(v_{\lambda_1}) < \overline{H}_S(v_{\lambda_2}).$$

References

- [1] G. Choquet (1953). Theory of capacities. *Annales de l'Institut Fourier* **5**, pp 131–295.
- [2] M. Grabisch and C. Labreuche (2000). To be symmetric or asymmetric? A dilemma in decision making. In: *Preferences and Decisions under Incomplete Knowledge*, Physica-Verlag, pp 179–194.
- [3] M. Grabisch and C. Labreuche (2002). The symmetric and asymmetric choquet integrals on finite spaces for decision making. *Statistical Papers* **43**, pp 37–52.
- [4] M. Grabisch and C. Labreuche (2005). Bicapacities I : definition, Möbius transform and interaction. *Fuzzy Sets and Systems* **151**, pp 211–236.
- [5] M. Grabisch and C. Labreuche (2005). Bicapacities II : the Choquet integral. *Fuzzy Sets and Systems* **151**, pp 237–259.
- [6] I. Kojadinovic, J.-L. Marichal, and M. Roubens (2005). An axiomatic approach to the definition of the entropy of a discrete Choquet capacity. *Information Sciences*. In press.
- [7] J.-L. Marichal (1998). *Aggregation operators for multicriteria decision aid*. PhD thesis, University of Liège, Liège, Belgium.

- [8] J.-L. Marichal (2000). An axiomatic approach of the discrete Choquet integral as a tool to aggregate interacting criteria. *IEEE Transactions on Fuzzy Systems* **8(6)**, pp 800–807.
- [9] J.-L. Marichal (2002). Entropy of discrete Choquet capacities. *European Journal of Operational Research* **3(137)**, pp 612–624.
- [10] J.-L. Marichal and M. Roubens (2000). Entropy of discrete fuzzy measures. *International Journal of Uncertainty, Fuzziness and Knowledge-Based Systems* **8(6)**, pp 625–640.
- [11] C. Shannon and W. Weaver (1949). *A mathematical theory of communication*. University of Illinois, Urbana.
- [12] C. E. Shannon (1948). A mathematical theory of communication. *Bell Systems Technical Journal* **27**, pp 379–623.
- [13] M. Sugeno (1974). *Theory of fuzzy integrals and its applications*. PhD thesis, Tokyo Institute of Technology, Tokyo, Japan.
- [14] A. Tversky and D. Kahneman (1992). Advances in prospect theory : cumulative representation of uncertainty. *Journal of Risk and Uncertainty* **5**, pp 297–323.